



# Lighting the Modern Educational Facility

Creating spaces for wellbeing and sustainability







# Contents

Our Sustainability Promise	4
Putting your institution in the best possible light	6
Reception	8
Art/Display	10
Classroom	12
Educo Vitality	14
Flexible and Open Learning Spaces	16
ELLE	18
Admin/Offices	22
Silencio : Arin	24
Science Lab	28
Sports Hall	30
Circulation Areas	32
Stairwells	34
Amenities/ Storage Spaces	36
Car Parks, Pathways and Facades	38
Organic Response in Education	42
Case Studies	44
50 years in the business	50
Local Solutions, Global Perspective	52



MEMBER 2021/22



See our complete range at <https://eagle.lighting>



# Our Sustainability Promise

At Eagle Lighting our purpose is to improve people's lives with lighting solutions that make a positive impact on their environment.

## Our Principles

Eagle Lighting is a proud industry leader. We take a holistic approach to sustainability by ensuring environmental, social, and economic sustainability is practiced throughout our operations and supply chain.

We promote our core values of Collaboration, Quality, and Respect through an emphasis on innovation and continuous improvement. It is our role to demonstrate good practice and encourage the highest standards of environmental and human rights protection from suppliers and partners.

### 1. Our Commitments



**UN Sustainable Development Goals (SDGs):** Eagle Lighting's sustainability strategy is guided by the SDGs. We have identified five core SDGs that we can directly advance through our business.

**Industry leadership:** We are committed to leading our industry in sustainability. We produce low-impact, ergonomic, and energy efficient lighting solutions.

**Green Building Council:** As an active member of both the Green Building Council of Australia and New Zealand, Eagle Lighting demonstrates its support for a sustainable built environment.

### 2. Our Products

**Energy efficiency:** Our use of LED technology directly contributes to energy efficiency in a range of environments.

**Reducing environmental impacts:** We are constantly improving our environmental performance by taking a full life cycle perspective, enabling us to identify and reduce impacts. We are certified to ISO 14001 – Environmental Management Systems.

**Circularity:** We maximise, reuse and resource efficiency in our luminaires' design, and so embracing the circular economy is the next logical step in our sustainability programme.

We will continue to seek more Cradle-to-Cradle Certified product, and are committed to bringing our products to the forefront of the circular economy.

### 3. Our Business

**Management:** Eagle Lighting remains accountable through ISO 9001 – Quality Management Systems. Our Responsible Procurement Framework is integrated into our quality management system, setting a high standard for us and our suppliers.

**Wellness and diversity:** We are committed to providing a work environment where our employees can thrive. We promote equal opportunities for all people regardless of race, national origin, ethnicity, religion, gender, age, marital status, sexual orientation, disability, and oppose discrimination of all forms.

### 4. Our Supply Chain

**Responsible Procurement Framework:** Eagle Lighting is committed to responsible sourcing as part of our sustainable business strategy. We believe that through collaboration and encouragement across the supply chain, our suppliers, partners, and customers all benefit. Our Responsible Procurement Framework consists of a thorough screening process for suppliers and a Supplier Code of Conduct.



# Putting your institution in the best possible light

An Australian-based industry leader with nearly 50 years' experience, Eagle Lighting leads the way in lighting and lighting control solutions in contemporary education environments.

We help deliver carefully-designed educational facilities that are sustainable, dynamic and efficient – key ingredients in attracting students, staff and partners in a highly-competitive global education market.

Our range of energy efficient luminaires supports optimum conditions for everyone in education settings, whether that's staff needing to work at peak performance or students who require a stimulating learning environment.

With expert knowledge, a deep global network and a commitment to R&D, we offer the reliability, customisation and

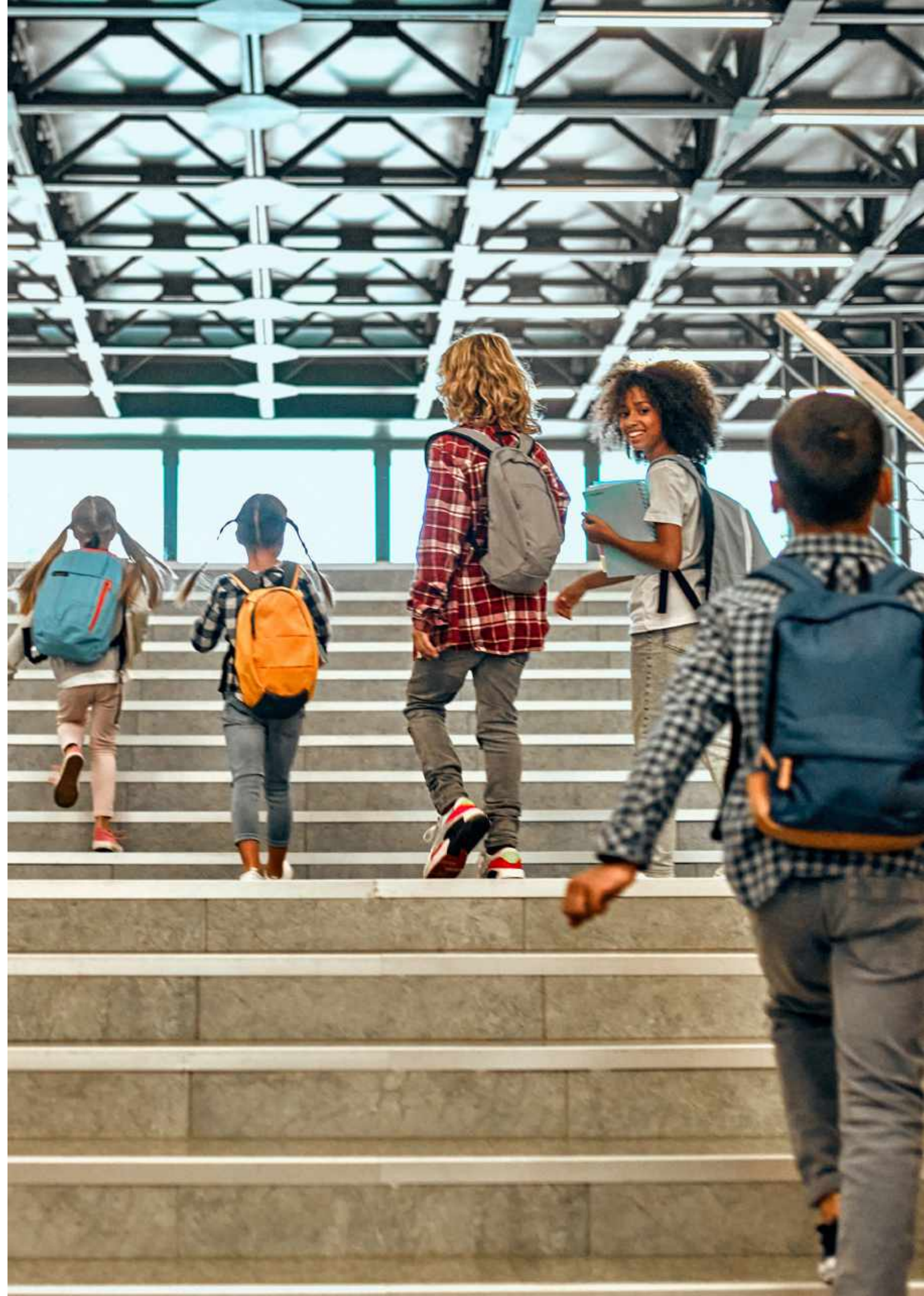
responsiveness you need today, with the insight, knowledge and engineering capabilities to adapt to future challenges.

In the following pages, we present a range of lighting solutions for key spaces in a typical education facility - whether that be a new build, refurbishment, or refresh.

We appreciate that every project is unique and so we present some general ideas for lighting a standard educational facility to stimulate thinking.

Our wide range of luminaires offer solutions for all learning spaces, giving you the creative freedom needed to enhance your education project - delivering easy to control, energy efficient and sustainable solutions.

We look forward to discussing with you how Eagle Lighting can provide lighting solutions for your education project.







# Reception

The entrance and reception area is a key space for any school as it establishes the visitor's first impressions. The lighting in this area should be welcoming and vibrant.

There is also an opportunity here to utilise decorative lighting to further enhance the building aesthetics.



Appareo



Scoot Linear



Scoot



Notor 36



ELLE



Dwide Ceiling



Nove



Pleiad G4 128  
Surface mounted



Silencio : Arin



# Art/Display

For art displays, the lighting needs to make the students' efforts the hero, using CRI90+ to reproduce colour accurately. Our lighting solutions add to the sense of pride and achievement the students, teachers and families will feel when appreciating the finished product.

Use spotlights to accent, wall washers to achieve a uniform wash of light across the entire vertical surface, or a combination of both.



Touch Mini



ComboLINE



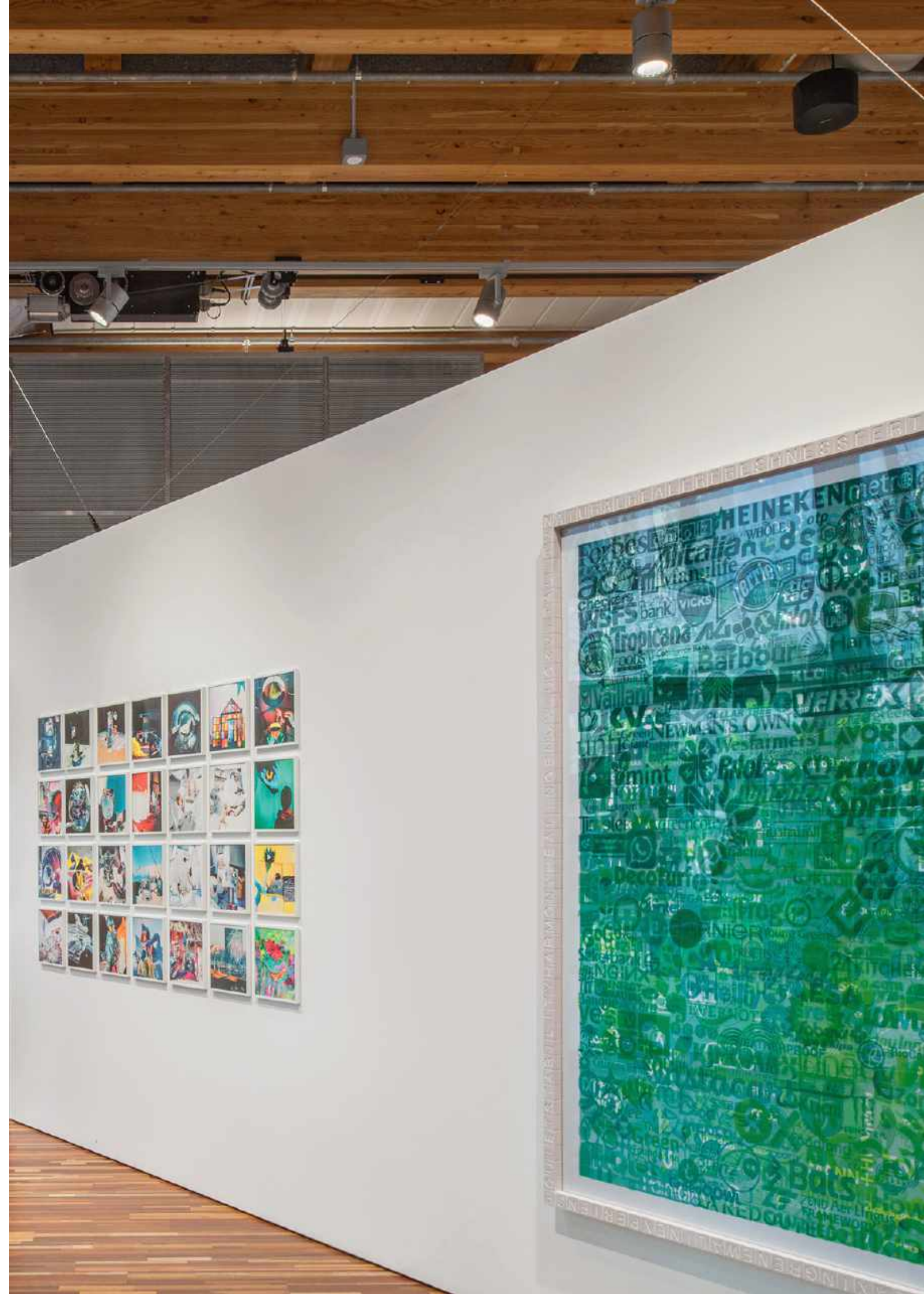
Pleiad G4 Wallwasher



Notor Asymmetrical

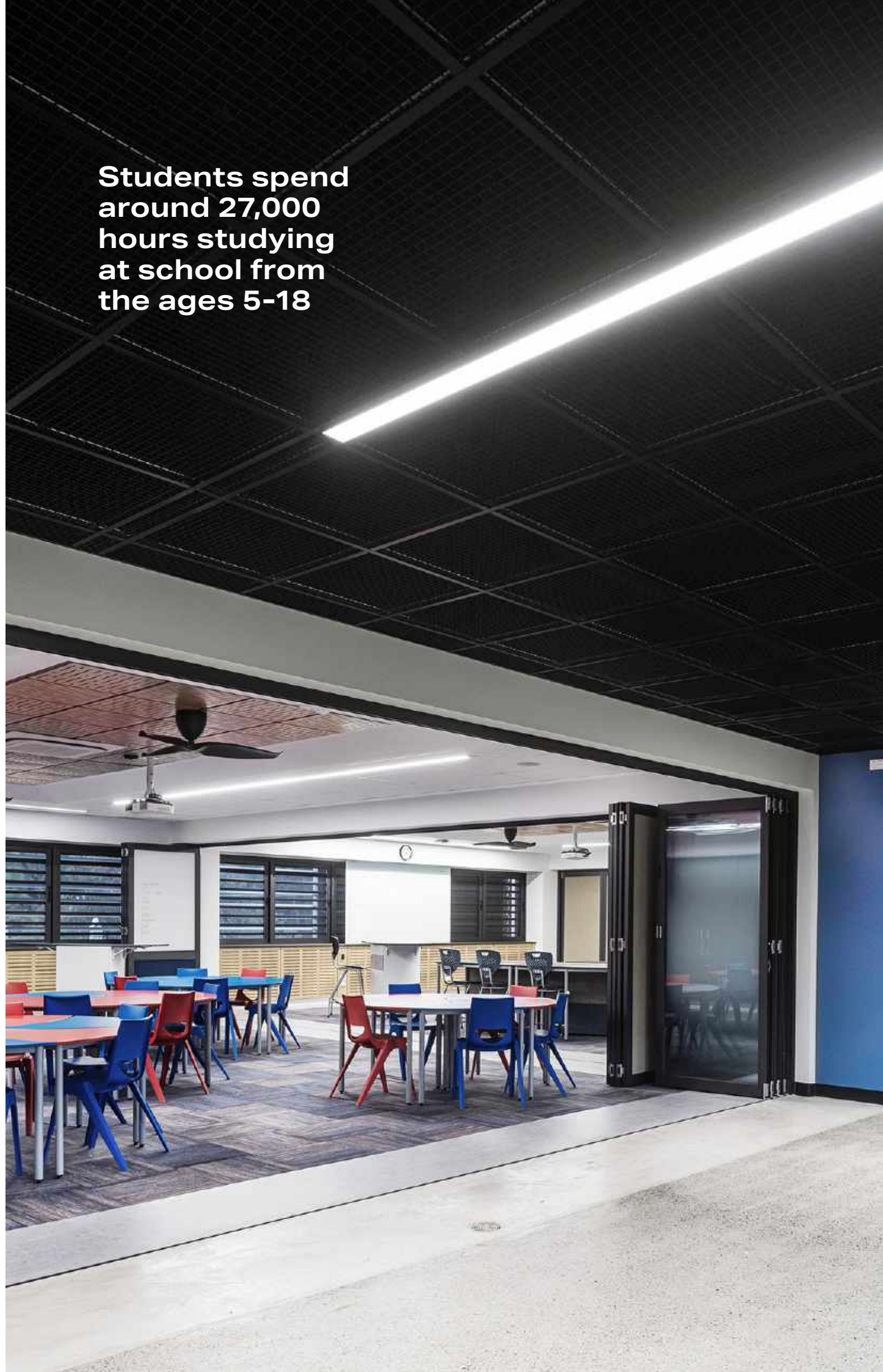


Pleiad G4 Flex





Students spend  
around 27,000  
hours studying  
at school from  
the ages 5-18



# Classroom

Classrooms are the centre of any learning establishment and the most commonly occupied space.

There are many different activities undertaken in these learning areas and regardless of the task or age of the user, lighting must accommodate the diversity.



Educo Vitality



OmniPOD Linear



Indigo Maestro Beta  
Concealed Air



ELLE



Enviro Evoline  
Concealed Air



Dwide Suspended



Vertex



Aureled Dropped



Silencio : Arin

# Educo Vitality

Designed for educational facilities, Educo Vitality is **Australia's first luminaire to receive Cradle to Cradle Certification®**. Creating a comfortable environment for teaching and learning, Educo Vitality is a high performance and exceptionally low-UGR luminaire engineered with ease of installation in mind.

**Designed, tested and manufactured in Australia**, Educo is designed to achieve WELL and Greenstar certifications along with obtaining a high NABERS rating.

Further adding to its sustainability credentials, Educo is designed using circular economy principles to develop a sustainable product that supports the circular economy - enabling recycling and reusing of its constituent parts.



Available with integrated Organic Response node, offering granular control and maximising energy efficiency.

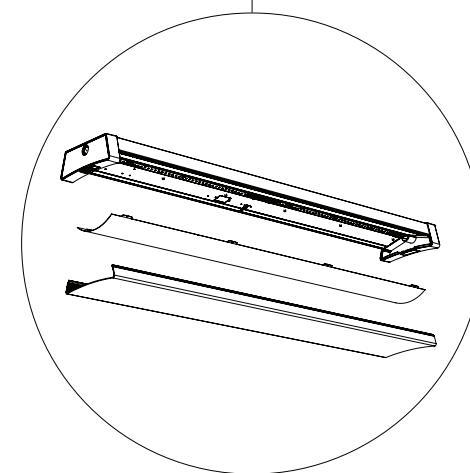


Capable of achieving UGR of  $\leq 16$  which translates to improved visual acuity and comfort for students and teachers.

One body, one gear tray: easy and user friendly for upgrade - simply change the cassette.

Unique concave micro-prismatic diffuser.

Easy to install.



## Embracing circularity

Circularity is a model of sustainability that is about keeping products at their highest utility through their life and into their regeneration and recovery.

With the future in mind, Educo Vitality has been developed to be modular and easy to disassemble. This means we can upgrade your lighting solution in-situ within minutes, without the need to fully replace the luminaire - saving money and our environment.

As a result, the luminaire remains at its optimal performance utility and gains value over time.

Cradle to Cradle Certified® assesses the safety, circularity and responsibility of materials and products across five categories of sustainability performance: material health, product circularity, clean air and climate protection, water and soil stewardship, and social fairness.

*Cradle to Cradle Certified® is a registered trademark of the Cradle to Cradle Products Innovation Institute.*



# Flexible and open learning spaces

A multiple-use space where stimulating colours and good lighting design are essential, regardless of the time of day.

The increase of flexible learning and modifiable spaces within educational facilities demands a variety of lighting aesthetics and installation options.



OmniPOD Linear 150



ELLE



Dino Opal



Pleiad G4 205



Pozzo



Pleiad G4 168  
Surface Mounted



OmniPod 6x6 Air 2-Row



OmniPod 6x6 Air Square



Silencio : Arin





# ELLE

## Eagle Lighting Linear Extrusion

From long, unbroken lines of light to single pendants, the ELLE range is a modular linear lighting system - designed, tested and manufactured in Melbourne.

Designed with creativity and ease of installation in mind, ELLE can be configured to meet your project's unique application and interior design intent. Whether you require purely decorative accent lighting or technically perfect office lighting, the ELLE range offers a version to suit any project.

ELLE is a sustainable, energy-efficient system providing significant advantages for developers and

occupiers seeking to achieve WELL building and Greenstar Certification.

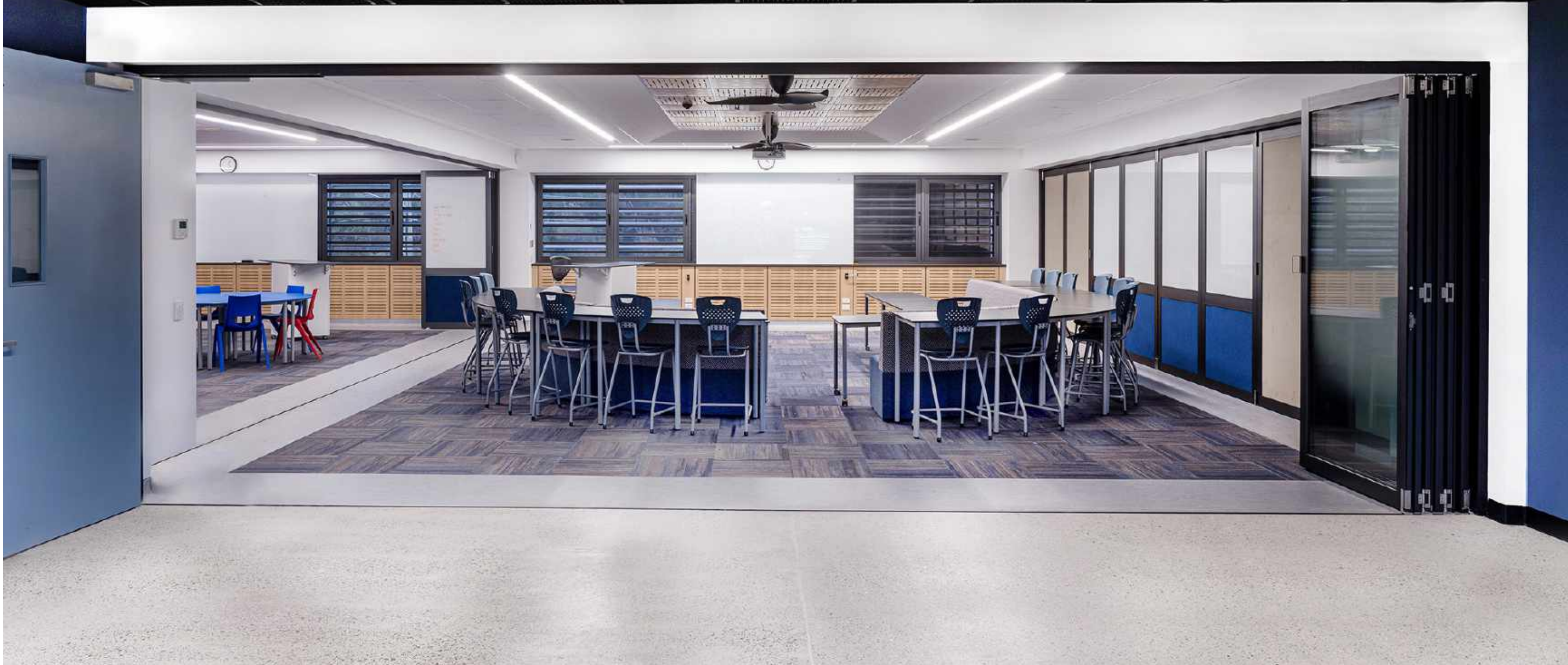
Thanks to its design and customisation options, the range is ideal for a wide variety of environments, including workplace, healthcare and education facilities, leisure/hospitality, retail/shopping centres, airport/rail circulation and commercial precinct.

Given this modular system's possibilities, we sum ELLE up in four simple words: Sustainability - Quality - Flexibility - Affordability.

[LEARN MORE >](#)



The students of tomorrow will approach education in ways that have never existed before, in environments that break the mould of the traditional classroom







# Admin/Offices

Good lighting in the office contributes to a positive work environment where everyone feels comfortable and motivated. It is important that the luminaires selected are designed for visual comfort and to avoid glare for screen work.



Circadia



Pleiad G4 165



Dwide Recessed



Omnipod Linear



Indigo Maestro Delta



Multilume ReThink



Enviro Evoline



Vertex



# Silencio: Arin

Introducing Arin - a suspended pendant that supports visual and acoustic optimisation.

Made in Australia from environmentally friendly materials, Arin is a stylish, sound-absorbing high-performance luminaire designed to enhance commercial and education environments.

Thanks to its acoustic properties, this stunning pendant enhances interior design while helping to maintain a comfortable and compliant ambient noise level.

With an acoustic panel forming the perimeter component, cushioning a central array of curved optical chambers, Arin provides premium quality, low-glare illumination.

Optimal lighting and acoustic performance reduce stress, minimize distractions, enhance productivity, and promotes social interaction by ensuring all occupants can clearly hear and be understood.



Ethically sourced and manufactured in Melbourne.



Each Arin pendant is capable of absorbing 45% of the soundwaves that it intercepts reducing the reverberant noise in a space.

Arin provides premium quality, low glare illumination, with high colour rendering accuracy CRI90+ and options for colour changing and personalised lighting scenes.

Exceeds BCA 2019/J6 energy efficiency requirements via optimised beam distribution.

The Cube fabric used in Arin is manufactured locally by Autex from >60% recycled PET plastic material.

Acoustic perimeter made from 100% polyester fibre (PET)

Enhance your interior design with Arin by selecting from a diverse palette of refreshing, contemporary colours to suit your unique interior design.

Arin's acoustic panel is customisable in both shape and output providing you with creative freedom for your project.







# Science Lab

We have a range of luminaires to meet the requirements of any science lab – whether you require specialist luminaires where protection against contamination is required or a general lighting solution that provides high efficacy, exceptional lifetime and low glare values.



Cleanroom



Educo Vitality



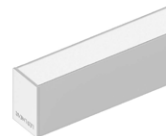
OmniPOD Linear 150mm



Aureled



Vertex Air



Mars Opal IP40







# Sports Hall

These multi-functional spaces need to be flexible enough to cope with a wide variety of sporting uses and lighting must be adaptable, consistent and robust.



Flight Sport Vitality



Hero



Excis LED



Densus



# Circulation Areas

The circulation routes through a school are the main arteries taking pupils, staff and visitors around the facility.

Functionality and energy efficiency is critical, with the primary purpose of the lighting to create safe and easy navigation.



Notor Recessed



Omnipod Downlight



Pleiad G4 125



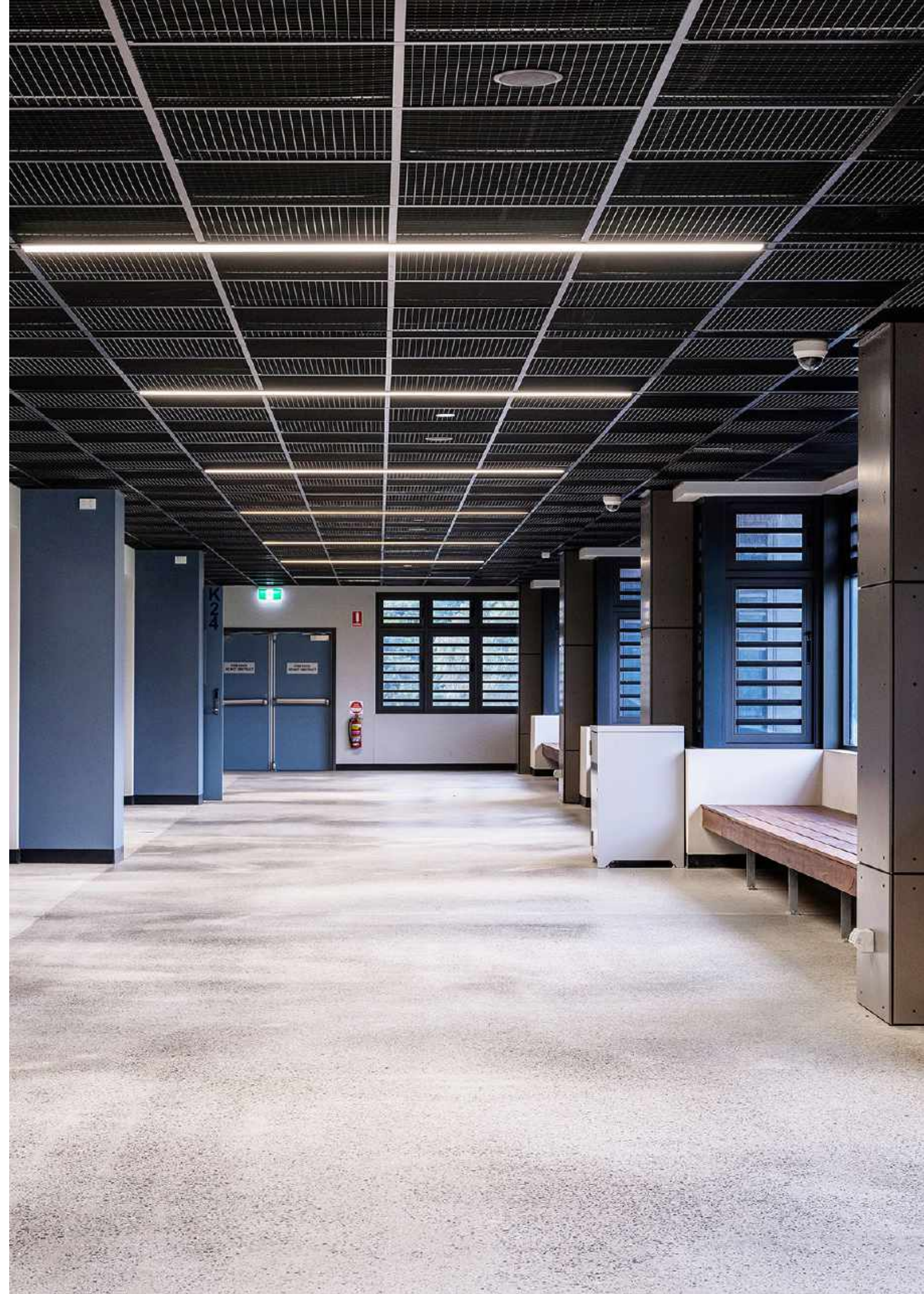
Torino



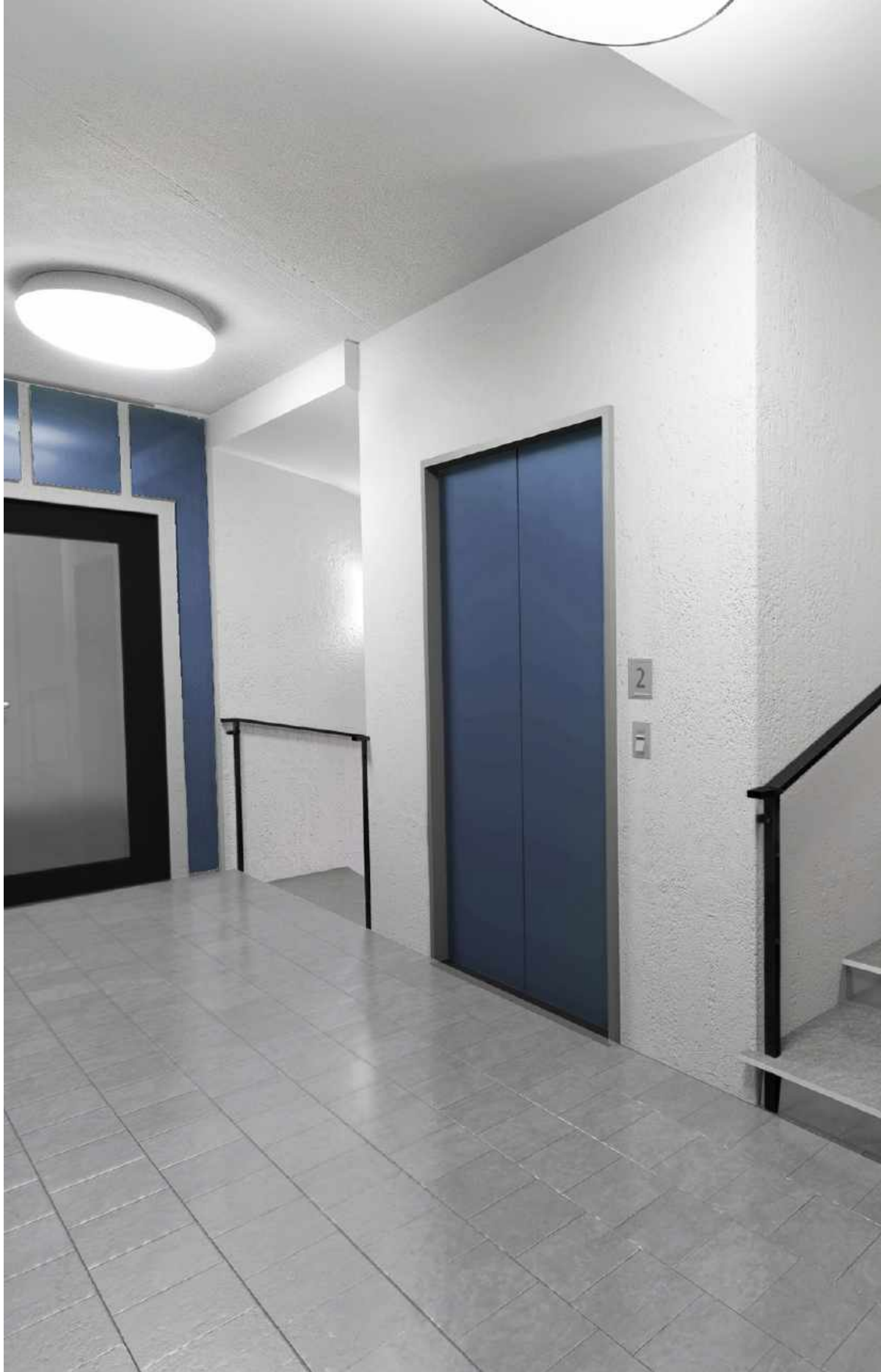
Pleiad G4 128  
Surface Mounted



ELLE







# Stairwells

We have a range of energy efficient, attractive and robust luminaires that are suitable for stairwells and adjoining circulation spaces.



Densus LED



RapidLED



Discovery Evo



Dwide Wall



Notor 65 Wall



Duomo



# Amenities/ Storage Spaces

Well-lit hygienic areas contribute to space that feels fresh and pleasant to visit. Light on ceilings and walls helps to define the room, while light above the washbasins ensures we can see ourselves in a clear and comfortable light, without glare.



Cirkel



Aqua



Pleiad G4 125



Telescope



Discovery Evo



RapidLED





# Car Parks, Pathways and Façade

Outdoor environments must balance security, safety and energy efficiency while creating attractive environments that enhance both ambience and architecture.

Our range of energy efficient outdoor lighting solutions does just that - meeting code compliance, functionality, durability, safety, and security while creating great places for people.

Our low-maintenance, reliable solutions include luminaires for building façades, roofs, parking and public spaces.

The area around the facility entrance has both a welcoming and a guiding function. It is important that visitors are able to quickly recognise where entrance doors are and that stairs, ramps, and direction signs are well lit.

The road from bus stops and parking lots up to the education facility should stay on at all hours. Pole top fixtures provide good general light, while lower bollard's facilitate orientation on walkways and sidewalks. Façade lighting accentuates the building and softens the transition between the outside and inside. Wall and ceiling fixtures

create a comfortable vertical light and accentuate the signage. Eagle Lighting's access to global experts and products from Designplan, Simes, LED Linear and Fagerhult delivers a combined capability for outdoor lighting that is unmatched in Australia.

Safety on campus is a priority, especially at night. With late night classes or library study sessions, there are typically a number of people walking through campus at all hours of the night.

### Things to consider –

- Minimise shadow to increase confidence
- 24/7 usage – cost and reliability
- Reliable/ low maintenance
- Tamper proof/ robust
- Minimise glare
- Aesthetically pleasing to further enhance the environment

### Wall Perimeter

	QuadEvo
	Duomo
	Smooth
	Rondo G3 Wall

### Walkway/Steps

	Skill
	Walker
	Minipetit Step Light

Simes products available via Eagle Lighting in Australia only.



# Car Parks, Pathways and Façade

## Façade



Movit



Zen



Pivot Projector

## Outdoor Undercover



Ministage Ceiling



Densus



Lobby Professional



Linilux

## Carpark



Evolume



Boulevard



Zelos Bollard



Ikonic bollard

Simes products available via Eagle Lighting in Australia only.





# Organic Response in Education

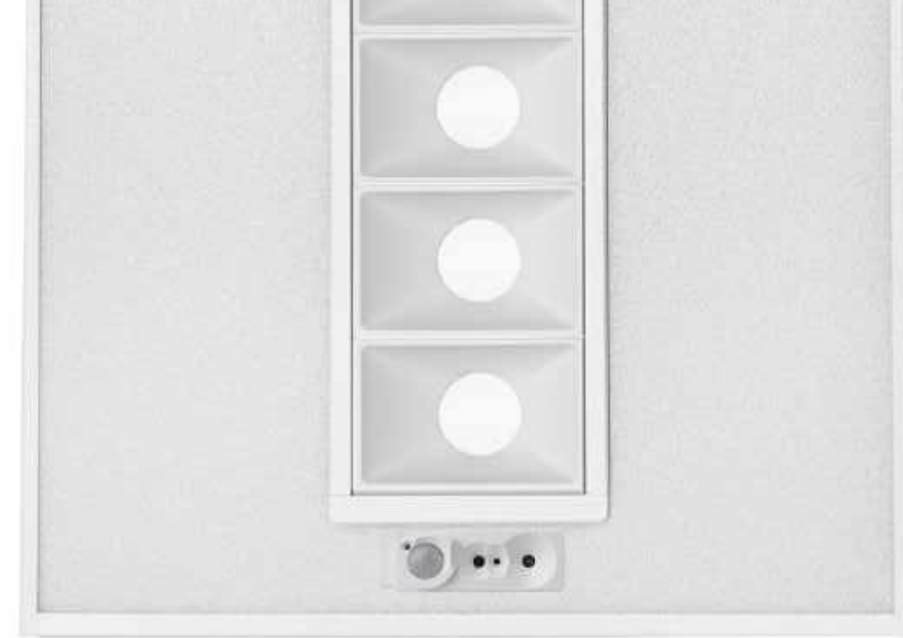
The ever-changing environments where people work, play and live mean that lighting expectations and demands are increasing.

With that in mind, at Eagle Lighting we collaborate closely with our clients to help them find the right control solution for their unique projects.

With a passion to push the performance of lighting, our future-orientated approach ensures that we develop luminaires that

maximise the latest in technological developments, personalisation and data.

And with integration of advanced control options into our luminaires, such as our Organic Response solution, your facility can adapt seamlessly to advances in IoT technology, without the higher costs associated with legacy-cabled lighting control systems..



As an 'out of the box' lighting controls solution OR provides:

- Plug & Play
- Wireless
- Intuitive App
- EnOcean/wireless/battery-less Wall switch Compatible
- Min/Max Levels
- Daylight Harvesting
- Occupancy Sensor
- High Density - No sensor blind spots

## Unlocking value beyond illumination

Greater functionality is available from the system via the OR cloud platform. Access is simply enabled with the addition of an IoT gateway, which then gives the user a fully connected system.

The OR connected solution offers everything 'out of the box' plus a host of features including scheduling, heat mapping via the ORT Portal, reporting and maintenance view, high-level BMS,

high-level IP integration and upgradeable features over the air.

As a truly smart building requires open and interoperable systems, OR features an open API that provides two-way integration between lighting control and your smart building's ecosystem.

Install today, be ready for tomorrow.





## Case Study

# Oxford Falls Grammar



Oxford Falls, NSW, Australia

Oxford Falls Grammar School is a co-educational private school for children from Kindergarten through to Year 12. Thirty years in existence, the school currently educates 1,100 students.

### Project Background:

Block K (Senior School Independent Learning & Resources Centre) is an expansion to Oxford Falls Grammar School as part of its 2020 Strategic Plan.

The new Block K provides the school with eight additional General Purpose Learning Areas over two storeys, senior private study area, private study room, and amenities along with new undercover drop off and pick up zone.

Eagle Lighting supplied luminaires for classrooms, study areas, corridors, and breakout space, along with exterior lighting.

### Luminaires Supplied

Notor | Enviro Evoline | Densus | Stage Projector | Ministage | Movit







## Case Study

# Sth Melbourne Park Primary



South Melbourne, VIC, Australia

Situated at the edge of Albert Park Lake, Melbourne, and housing the heritage-listed buildings of the former Albert Park Signal Depot – “the last remaining example of the Inter-War-style employed for Defence facilities in Melbourne during the 1930s,” - South Melbourne Park Primary School is home to 550 students.

The existing heritage buildings were repurposed for school use. The Drill Hall was adapted to house classrooms and a learning resource centre, while the Mess Hall houses administration and leadership spaces. Two former residences have been converted to music and arts houses. A new two-storey building with a large flat roof was also built on the site.

### Awards:

2019 Association for Learning Environments (A4LE), Victoria Chapter Education Facility Planning Awards, Entire New Educational Facility, Commendation 2019 Victorian School Design Awards, Best Project above \$10M, Finalist

Completed: 2019

### Luminaires Supplied

Notor 65 Opal | Cleanroom | Densus | Vertex | Pleiad G3 | Excis LED








## Case Study

# Prahran High School

 Prahran, VIC, Australia

Squeezed onto the land which previously housed Swinburne University Windsor, the new four-storey school has a library and performing arts area on the ground floor, along with science, visual arts and food technology areas, a gym on levels one to three and a rooftop garden on level four.

The VSBA (Victorian School Building Authority), Project Architects Gray Puksand and Electrical Consultants Wood and Grieve Engineers (now part of Stantec) have successfully maximised the space available through careful planning and design.

The interior and exterior lighting concept design features a combination of lighting solutions from Fagerhult, Eagle Lighting Australia and Simes.

Completed: 2019

### Luminaires supplied:

Notor 65 Delta | Notor Recessed | Opal Flush | Excis LED | Vertex | Densus LED | Cleanroom IP65 LED | Pleiad G3 | Skill | Lobby | Walker








# 50 Years in the business

## Bright ideas shine when we work together

Here's how we work with you to find the perfect solution to light up your spaces.



[View our Corporate Brochure here](#) 

### Collaboration

Your challenges are our challenges.  
We sit down with you to understand your biggest design problems and develop a plan to solve them.

### Comprehensive solutions

There's no lighting problem we can't solve.  
Drawing on our locally manufactured luminaires, and complemented by best-in-class European brands, our designers create lighting solutions that are elegant, efficient and tailored to your space.

### Technical support

We're here to answer even your most technical questions.  
Our in-house engineering, lighting design, and product specialists are industry-leading technical experts. And being local, you can get engineering support from the people who design, test and manufacture our primary luminaires.

### Quality

Your spaces are valuable.  
Let's work together to design livable, long-lasting, energy-efficient spaces and maximize the value of your building.

### Customisation

Lighting isn't one size fits all.  
Select one of our standard products or work with us to design a custom solution for your project.

### Local manufacturing

Don't let the supply chain stop your project in its tracks.  
Thanks to our in-house design, testing and manufacturing capabilities — 90% of our components come from Australian companies — you can rely on us to meet even the most demanding schedule.

### Delivery

We're here to ensure your luminaires arrive on time and in perfect condition.  
Thanks to our thorough, ISO accredited, Integrated Management System, and our in-house and third-party distribution centres, you can rest assured you're in safe hands.





# Local Solutions, Global Perspective.


Being a Fagerhult Group company lets us complement our locally manufactured range with industry-leading products sourced via the global Fagerhult Group — providing our clients with a complete portfolio of best-in-class luminaries.

Having access to this network allows

us to explore and leverage global and local trends in lighting, controls and connectivity solutions, while being able to implement them on the ground for our customers.

It also means we can draw on a wealth of technical knowledge and experience across an array of application areas.

We love being out on the road, holding education sessions on topical subjects from the world of lighting.

If you'd like to discover more about our educational presentations, please contact your ELA representative or [get in touch here](#). 





A Fagerhult Group Company

## Contact us today

<https://eagle.lighting>

[eagle@eaglelighting.com.au](mailto:eagle@eaglelighting.com.au)

## Australia

### Vic (Head Office)

17-19 Jets Court  
Melbourne Airport 3045  
(03) 9344 7444

### NSW

Level 1, 71-73 Alexander St  
Crows Nest 2065  
(02) 9420 5799

### QLD

53 Caswell Street  
East Brisbane 4169  
(07) 3891 0744

### ACT

0411 889 406

### WA (Distributor)

H.I.Lighting  
(08) 9377 1322

### SA (Distributor)

Buckford Illumination Group  
0448 064 412

### TAS (Distributor)

Southern Lighting  
(03) 6231 5599

## New Zealand

### Auckland (Head Office)

Ground Floor,  
82 Wyndham Street  
Auckland Central 1010  
0800 324 374

### Wellington

021 597 900

### Christchurch

Unit 4  
107 Wrights Road  
Christchurch 8024  
021 655 609



MEMBER 2021/22

Proud member of:



Property Council  
New Zealand



Green Building  
Council Australia  
Member 2022-2023



NZGBC  
TE KAUNHIHERA HANGANGA TAUTAIKAO  
Member 2022-2023



DESIGNED  
TESTED  
MANUFACTURED

