

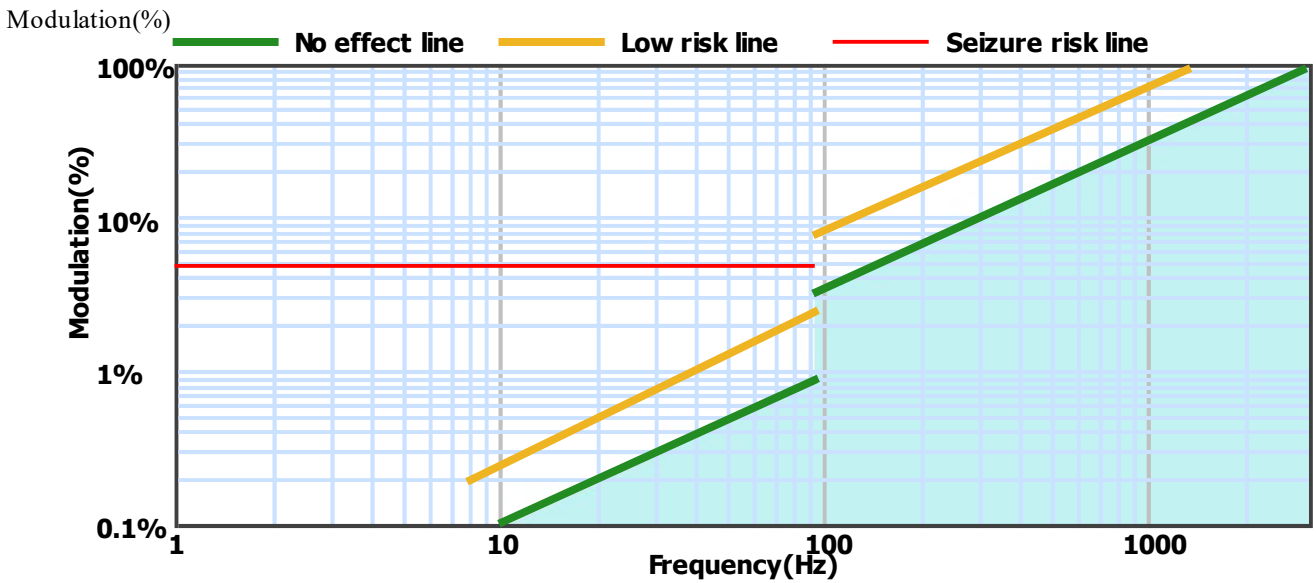
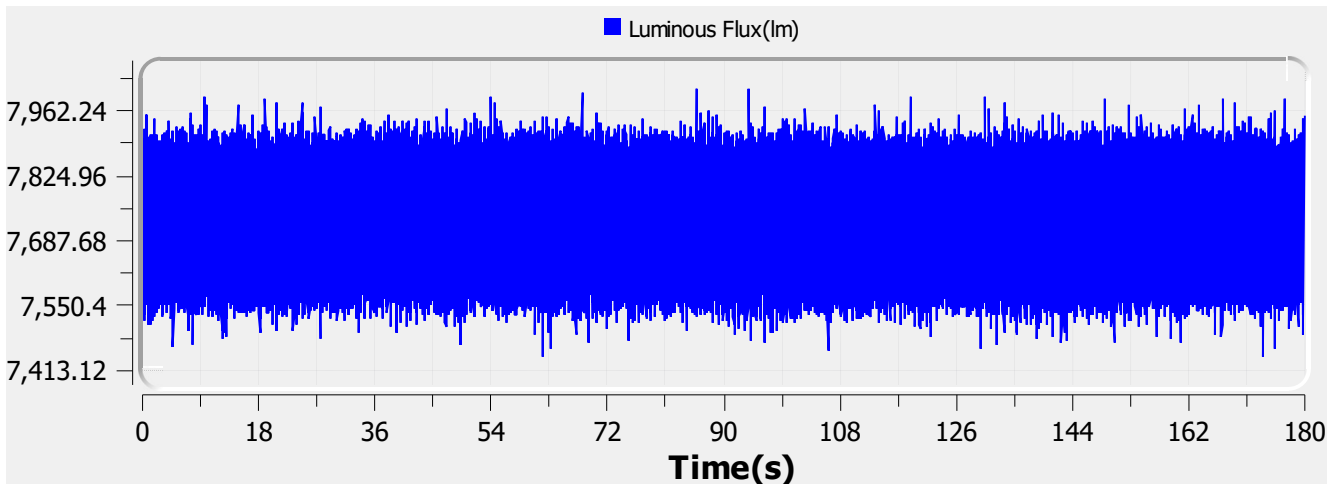
Flicker Test Report

Test condition

Photometric Type Luminous Flux(lm) Test range: Range1 Sampling Mode: Software
 Samplerate: 20 kS/s Sampling Time: 180.00 s

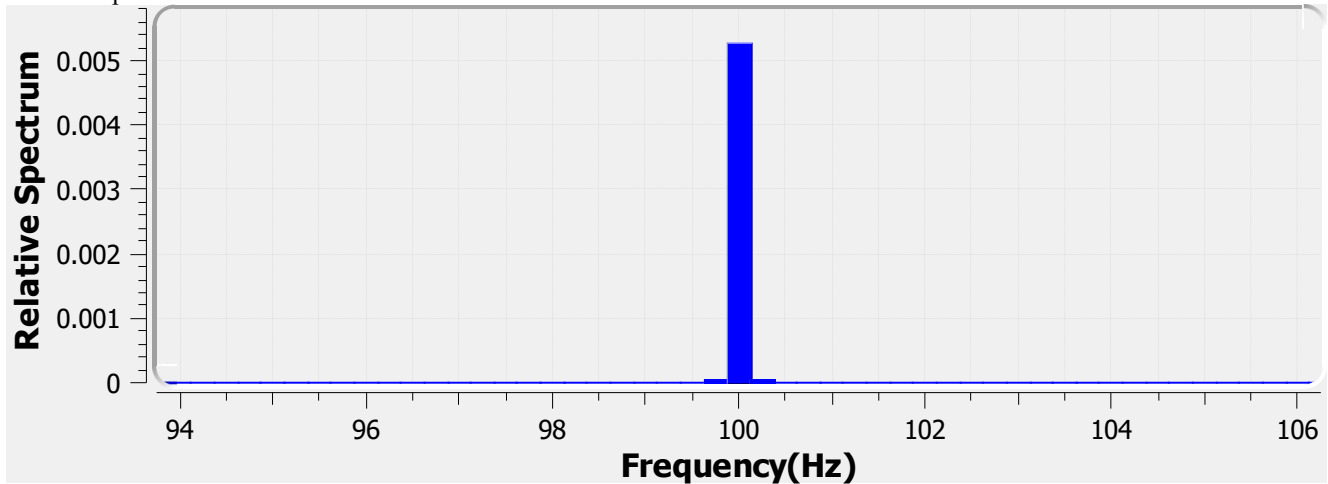
Test Wave

Local Waveform(0.000-180.000s)



Name:	CONCAVA SMTD 48W	Type:	LUMINAIRE
SN:	EL-CON-1500-244	Manufacturer:	Eagle Lighting Australia
Tester:	Frank Magdic	Sample time:	2020-12-7 09:51:19
Lamp base orientation:	Horizontal	Description:	CONCAVA SMTD 48W 6700LM 940 DIR/INDIR 900MM D
Remark:		Standard:	IESNA 2000,CIE TN 006,etc

Relative Spectrum Waveform



Test Result

Avg(lm): 7.728 k **Max(lm):** 8.012 k **Min(lm):** 7.440 k

BASIC

Frequency: 100.000 Hz

IEC-Pst [10KS/s]

Pst: 0.010 **Result:** very acceptable

CA CEC

PAM: 3.702% **PAM(40Hz):** 0.054% **PAM(90Hz):** 0.124%

PAM(200Hz): 0.904% **PAM(400Hz):** 0.992% **PAM(1000Hz):** 1.167%

ASSIST

Flicker Index: 0.003 **Percent Flicker:** 1.745% **d:** 0.000%

a: 0.000 **MP:** 0.0 **fb:** 0.000Hz

DP: 0% **Acceptability:** no consider stroboscopic effects

IEEE Std 1789

NM1: 0.103 **NM2:** 0.248 **Module Depth:** 1.745%

Risk level: No effect

CIE SVM

SVM: 0.029 **Visibility:** Not Visible

Name:	CONCAVA SMTD 48W	Type:	LUMINAIRE
SN:	EL-CON-1500-244	Manufacturer:	Eagle Lighting Australia
Tester:	Frank Magdic	Sample time:	2020-12-7 09:51:19
Lamp base orientation:	Horizontal	Description:	CONCAVA SMTD 48W 6700LM 940 DIR/INDIR 900MM D
Remark:		Standard:	IESNA 2000,CIE TN 006,etc