

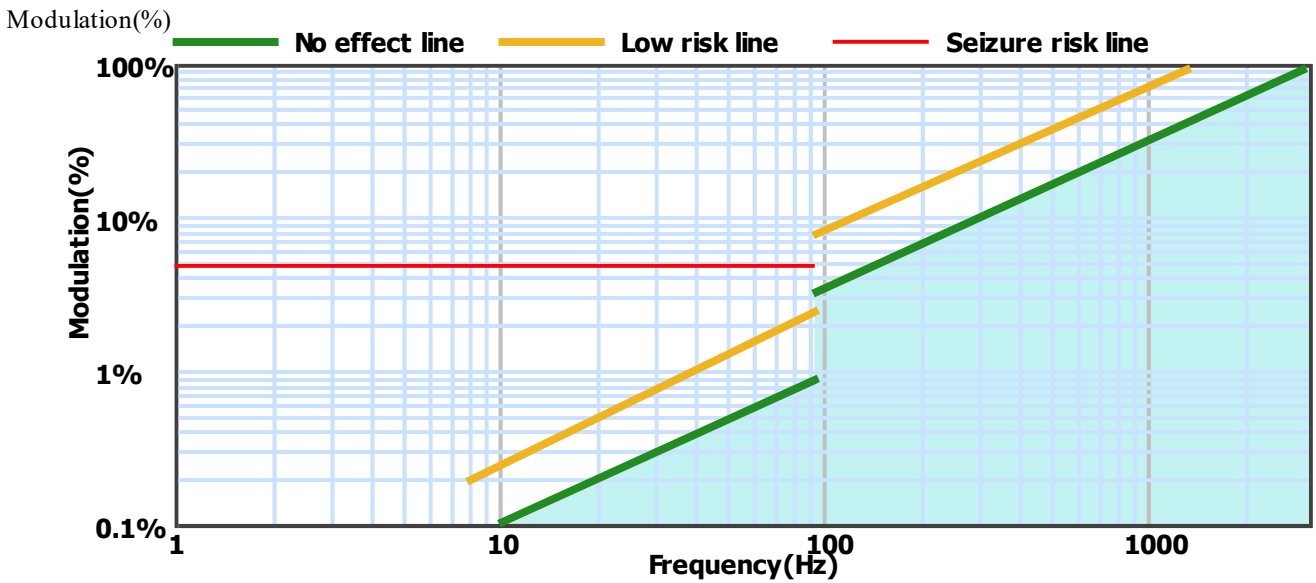
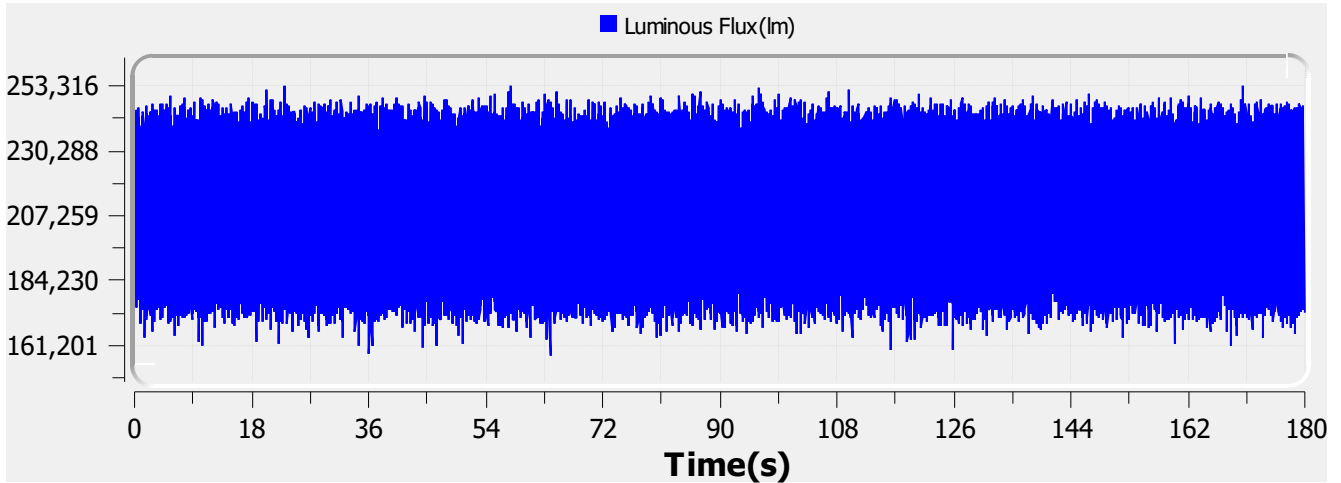
Flicker Test Report

Test condition

Photometric Type Luminous Flux(lm) Test range: Range2 Sampling Mode: Software
 Samplerate: 20 kS/s Sampling Time: 180.00 s

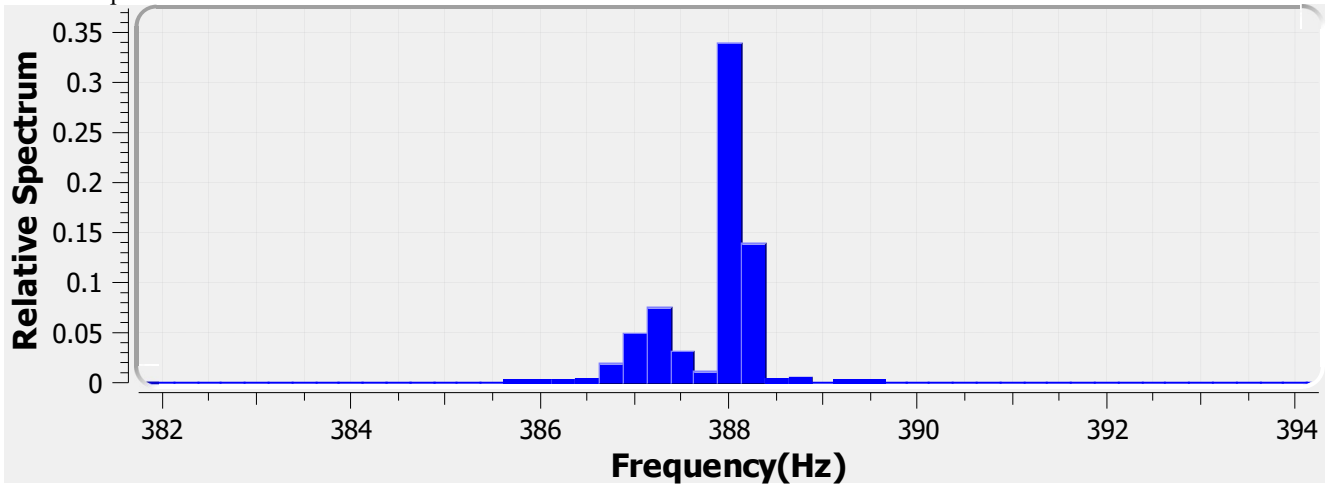
Test Wave

Local Waveform(0.000-180.000s)



Name:	Eagle Lighting Australia	Type:	EL-OMN6-2503-000
SN:	ELA-10688-F	Manufacturer:	Eagle Lighting Australia
Tester:	Frank Magdic	Sample time:	2021-6-10 15:49:01
Lamp base orientation:	Horizontal	Description:	OMNIPOD SQ ET 35W 5000LM 940 600x600 WHT-BLK PC
Remark:		Standard:	IESNA 2000,CIE TN 006,etc

Relative Spectrum Waveform



Test Result

Avg(lm):	208.045 k	Max(lm):	253.747 k	Min(lm):	157.794 k
BASIC					
Frequency:	388.000 Hz				
IEC-Pst [10KS/s]					
Pst:	0.080	Result:	very acceptable		
CA CEC					
PAM:	23.316%	PAM(40Hz):	0.257%	PAM(90Hz):	0.377%
PAM(200Hz):	1.062%	PAM(400Hz):	9.876%	PAM(1000Hz):	11.132%
ASSIST					
Flicker Index:	0.026	Percent Flicker:	11.557%	d:	62.571%
a:	1.199	MP:	0.1	fb:	97.100Hz
DP:	1%	Acceptability:	very acceptable		
IEEE Std 1789					
NMI:	0.285	NM2:	0.685	Module Depth:	11.557%
Risk level:	No effect				
CIE SVM					
SVM:	0.118	Visibility:	Not Visible		

Name:	Eagle Lighting Australia	Type:	EL-OMN6-2503-000
SN:	ELA-10688-F	Manufacturer:	Eagle Lighting Australia
Tester:	Frank Magdic	Sample time:	2021-6-10 15:49:01
Lamp base orientation:	Horizontal	Description:	OMNIPOD SQ ET 35W 5000LM 940 600x600 WHT-BLK PC
Remark:		Standard:	IESNA 2000,CIE TN 006,etc

Flicker Test Report

Test condition

Photometric Type Luminous Flux(lm) Test range: Range2

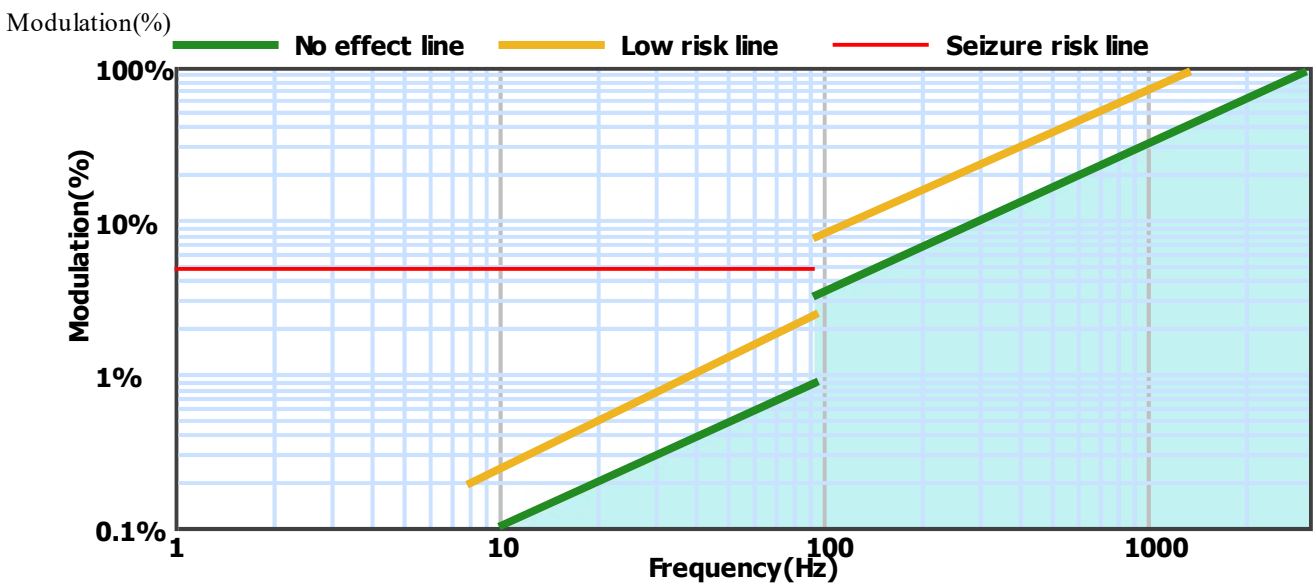
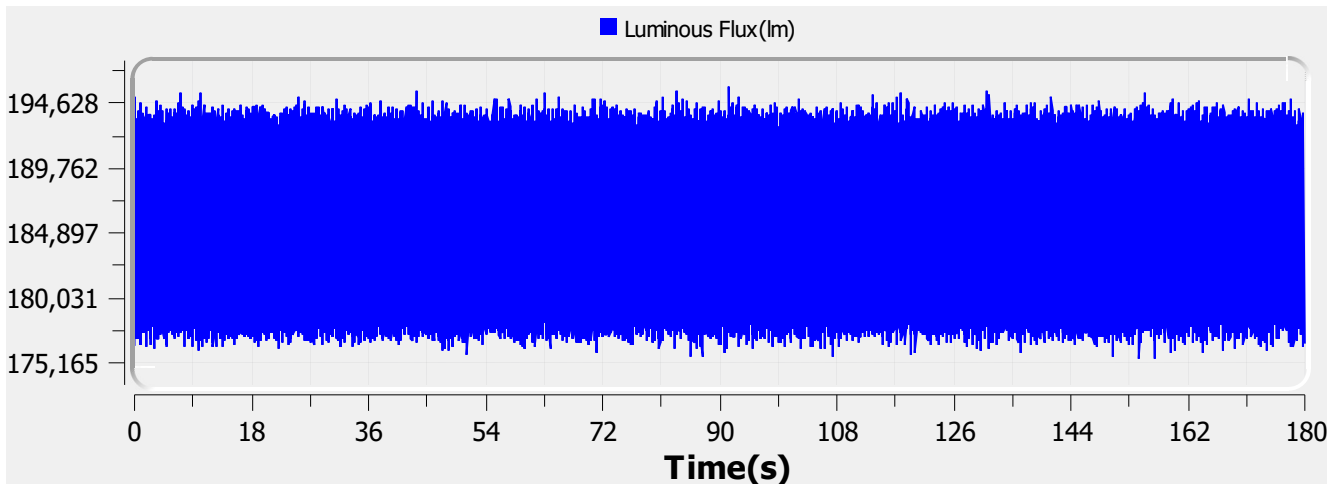
Sampling Mode: Software

Samplerate: 20 kS/s

Sampling Time: 180.00 s

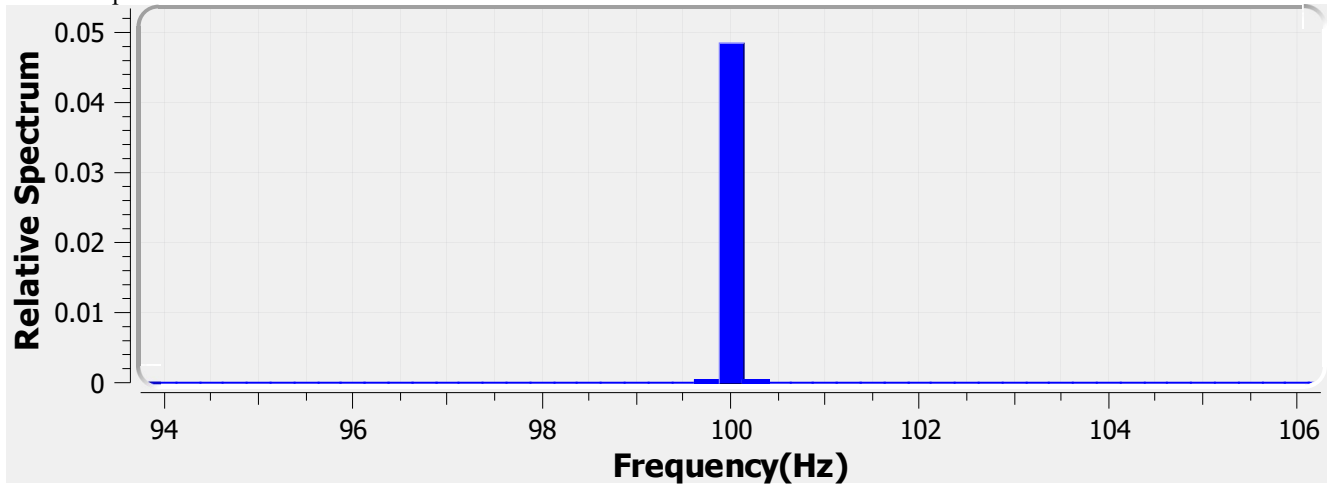
Test Wave

Local Waveform(0.000-180.000s)



Name:	Eagle Lighting Australia	Type:	EL-OMN6-2503-244
SN:	ELA-10689-F	Manufacturer:	Eagle Lighting Australia
Tester:	Frank Magdic	Sample time:	2021-6-11 14:41:32
Lamp base orientation:	Horizontal	Description:	OMNIPOD SQ ET 31W 4450LM 940 600x600 WHT-BLK PC
Remark:		Standard:	IESNA 2000,CIE TN 006,etc

Relative Spectrum Waveform



Test Result

Avg(lm):	185.560 k	Max(lm):	195.803 k	Min(lm):	175.529 k
BASIC					
Frequency:	100.000 Hz				
IEC-Pst [10KS/s]					
Pst:	0.020	Result:	very acceptable		
CA CEC					
PAM:	5.460%	PAM(40Hz):	0.062%	PAM(90Hz):	0.100%
PAM(200Hz):	2.398%	PAM(400Hz):	2.637%	PAM(1000Hz):	3.249%
ASSIST					
Flicker Index:	0.007	Percent Flicker:	3.739%	d:	72.723%
a:	1.373	MP:	0.0	fb:	18.591Hz
DP:	0%	Acceptability:	very acceptable		
IEEE Std 1789					
NMI:	0.303	NM2:	0.728	Module Depth:	3.739%
Risk level:	No effect				
CIE SVM					
SVM:	0.087	Visibility:	Not Visible		

Name:	Eagle Lighting Australia	Type:	EL-OMN6-2503-244
SN:	ELA-10689-F	Manufacturer:	Eagle Lighting Australia
Tester:	Frank Magdic	Sample time:	2021-6-11 14:41:32
Lamp base orientation:	Horizontal	Description:	OMNIPOD SQ ET 31W 4450LM 940 600x600 WHT-BLK PC
Remark:		Standard:	IESNA 2000,CIE TN 006,etc