

Flicker Test Report

Test condition

Photometric Type Luminous Flux(lm) Test range: Range2

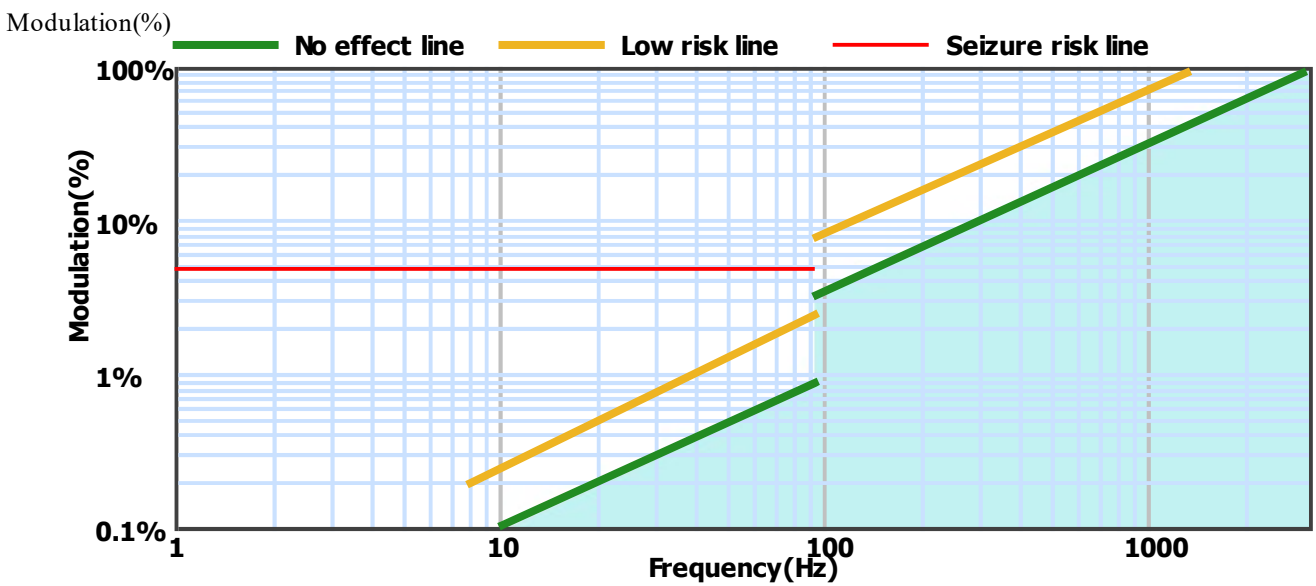
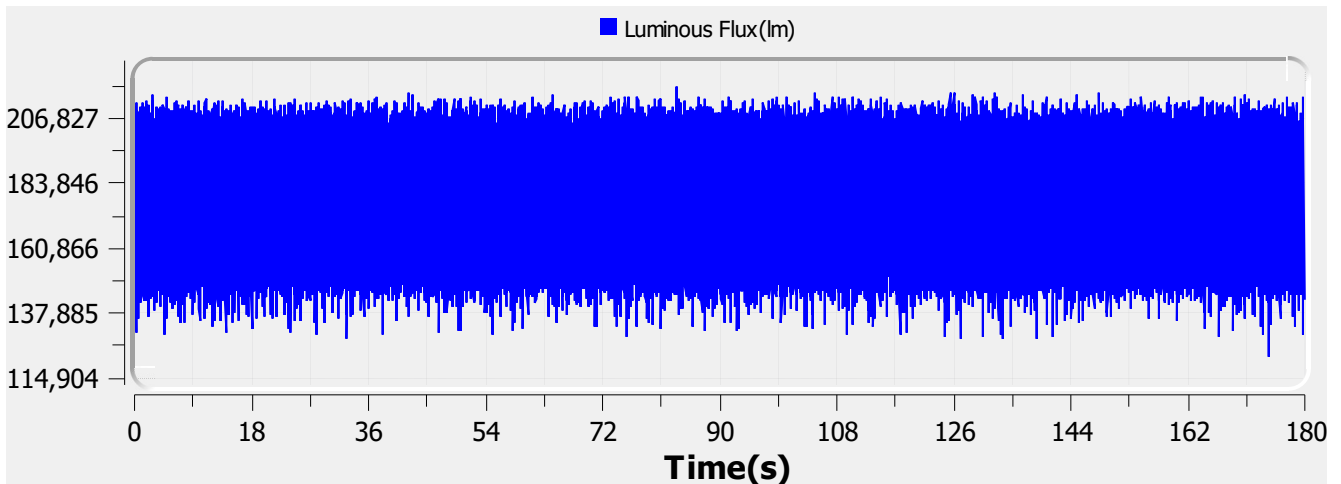
Sampling Mode: Software

Samplerate: 20 kS/s

Sampling Time: 180.00 s

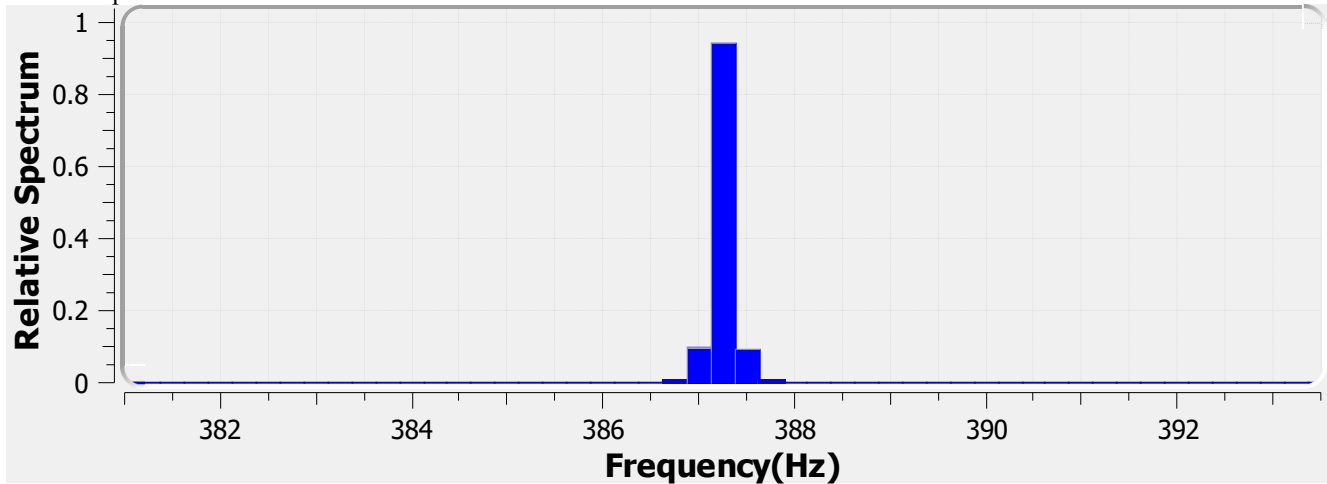
Test Wave

Local Waveform(0.000-180.000s)



| | | | |
|-------------------------------|--------------------------|----------------------|--------------------------------------|
| Name: | Eagle Lighting Australia | Type: | EL-OMN6-2500-200 |
| SN: | ELA-10685-F | Manufacturer: | Eagle Lighting Australia |
| Tester: | Frank Magdic | Sample time: | 2021-6-10 12:04:51 |
| Lamp base orientation: | Horizontal | Description: | OMNIPOD SQ ET 22W 3050LM 940 600x600 |
| Remark: | | Standard: | IESNA 2000,CIE TN 006,etc |

Relative Spectrum Waveform



Test Result

Avg(lm): 176.394 k **Max(lm):** 217.836 k **Min(lm):** 122.082 k

BASIC

Frequency: 387.250 Hz

IEC-Pst [10KS/s]

Pst: 0.081 **Result:** very acceptable

CA CEC

PAM: 28.171% **PAM(40Hz):** 0.401% **PAM(90Hz):** 0.805%
PAM(200Hz): 2.051% **PAM(400Hz):** 12.972% **PAM(1000Hz):** 13.612%

ASSIST

Flicker Index: 0.034 **Percent Flicker:** 13.607% **d:** 66.030%
a: 1.130 **MP:** 0.3 **fb:** 107.612Hz
DP: 1% **Acceptability:** very acceptable

IEEE Std 1789

NMI: 0.358 **NM2:** 0.859 **Module Depth:** 13.607%
Risk level: No effect

CIE SVM

SVM: 0.177 **Visibility:** Not Visible

| | | | |
|-------------------------------|--------------------------|----------------------|--------------------------------------|
| Name: | Eagle Lighting Australia | Type: | EL-OMN6-2500-200 |
| SN: | ELA-10685-F | Manufacturer: | Eagle Lighting Australia |
| Tester: | Frank Magdic | Sample time: | 2021-6-10 12:04:51 |
| Lamp base orientation: | Horizontal | Description: | OMNIPOD SQ ET 22W 3050LM 940 600x600 |
| Remark: | | Standard: | IESNA 2000,CIE TN 006,etc |

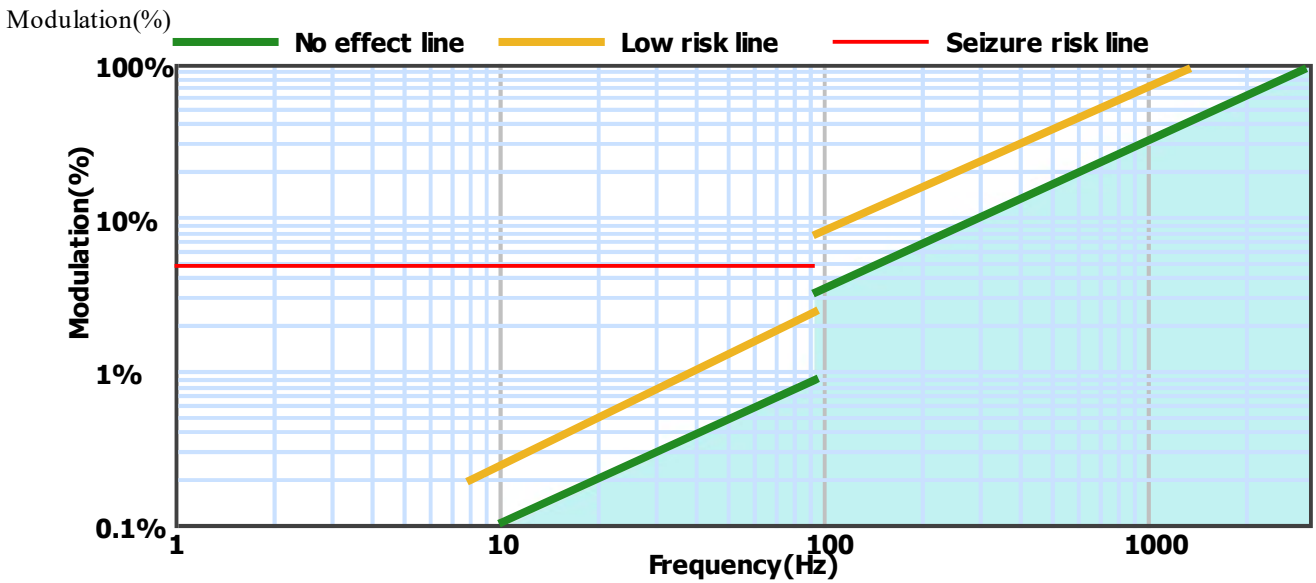
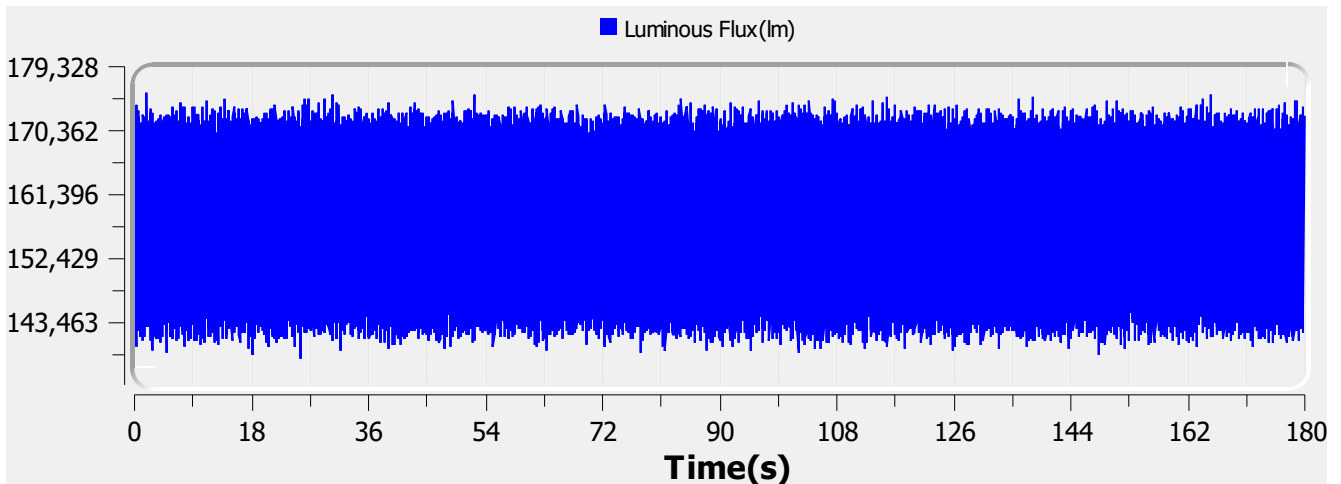
Flicker Test Report

Test condition

Photometric Type Luminous Flux(lm) Test range: Range2 Sampling Mode: Software
 Samplerate: 20 kS/s Sampling Time: 180.00 s

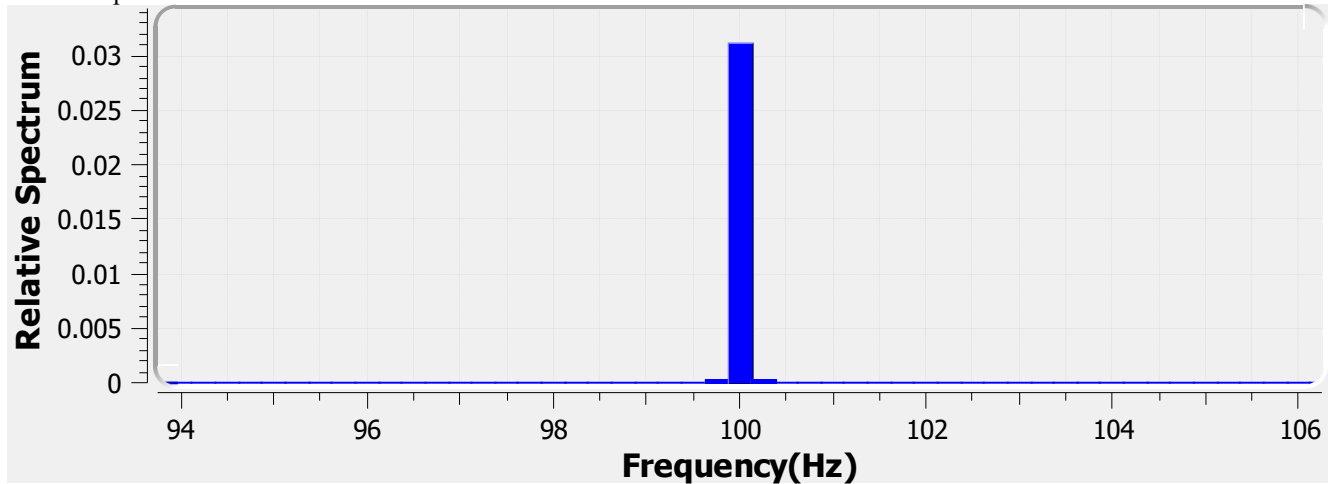
Test Wave

Local Waveform(0.000-180.000s)



| | | | |
|-------------------------------|--------------------------|----------------------|---|
| Name: | Eagle Lighting Australia | Type: | EL-OMN6-2500-244 |
| SN: | ELA-10692-F | Manufacturer: | Eagle Lighting Australia |
| Tester: | Frank Magdic | Sample time: | 2021-6-11 11:03:30 |
| Lamp base orientation: | Horizontal | Description: | OMNIPOD SQ ET 19W 2750LM 940 600x600 DALI CLO |
| Remark: | | Standard: | IESNA 2000,CIE TN 006,etc |

Relative Spectrum Waveform



Test Result

| | | | | | |
|-------------------------|------------|-------------------------|---------------------|----------------------|-----------|
| Avg(lm): | 156.554 k | Max(lm): | 175.719 k | Min(lm): | 138.359 k |
| BASIC | | | | | |
| Frequency: | 100.000 Hz | | | | |
| IEC-Pst [10KS/s] | | | | | |
| Pst: | 0.016 | Result: | very acceptable | | |
| CA CEC | | | | | |
| PAM: | 11.896% | PAM(40Hz): | 0.167% | PAM(90Hz): | 0.284% |
| PAM(200Hz): | 2.238% | PAM(400Hz): | 2.299% | PAM(1000Hz): | 2.913% |
| ASSIST | | | | | |
| Flicker Index: | 0.010 | Percent Flicker: | 7.452% | d: | 81.107% |
| a: | 0.421 | MP: | 0.1 | fb: | 65.244Hz |
| DP: | 1% | Acceptability: | somewhat acceptable | | |
| IEEE Std 1789 | | | | | |
| NMI: | 0.252 | NM2: | 0.605 | Module Depth: | 7.452% |
| Risk level: | No effect | | | | |
| CIE SVM | | | | | |
| SVM: | 0.069 | Visibility: | Not Visible | | |

| | | | |
|-------------------------------|--------------------------|----------------------|---|
| Name: | Eagle Lighting Australia | Type: | EL-OMN6-2500-244 |
| SN: | ELA-10692-F | Manufacturer: | Eagle Lighting Australia |
| Tester: | Frank Magdic | Sample time: | 2021-6-11 11:03:30 |
| Lamp base orientation: | Horizontal | Description: | OMNIPOD SQ ET 19W 2750LM 940 600x600 DALI CLO |
| Remark: | | Standard: | IESNA 2000,CIE TN 006,etc |