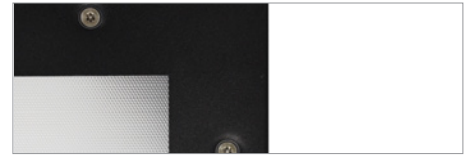
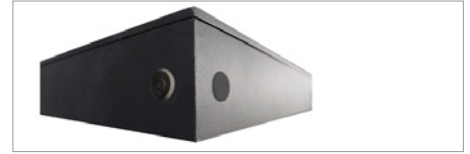


# Herculed



Anti-tamper screws



Multiple cable entry and exit points



## Key Family Details

Optical System:	DELTA CDP + Diffuser + Polycarbonate Diffuser layer
Mounting Type:	Surface mounted
Colour Consistency Initial:	3 SDCM
Finish Options:	Black. Other colours available on request.
System Warranty:	5 years
CRI (Ra):	80+
CCT:	4000K
R9:	0+
COI Compliant:	No
Melanopic Ratio	-

## Application

The product has been designed as an LED lowbay solution for the transitional zones of underground car-parks but it may be used in any under-canopy application where a robust luminaire is required.

## Design

The HercuLED is a surface mounted IK10 and IP65 rated luminaire designed, tested and manufactured in Australia. The front frame is made of 1.2mm stainless steel whilst the body is constructed of aluminium.

## Optics

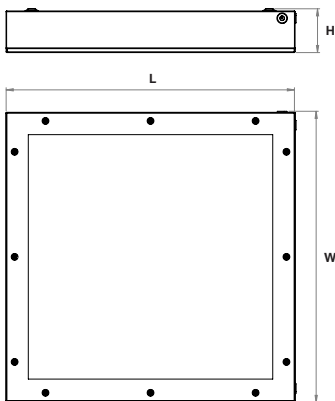
The diffuser used is made of UV stabilised polycarbonate and the prisms act as a light guide whilst eliminating glare.

## Control

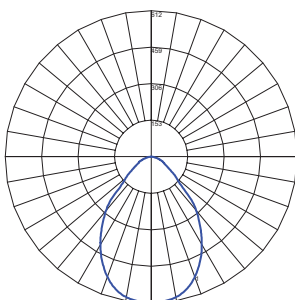
Standard non-dimm or DALI dimmable.

## Mechanical Drawing

Physical Parameters	Luminaire Dimensions			Weight
	H [mm]	W [mm]	L [mm]	
Code				[kg]
EL-HCL-1100	675	675	100	12



## Polar Curve 675x675 840



Maximum Candela = 612cd/klm  
Located At Horizontal Angle = 0, Vertical Angle = 0.5

# Herculed



## Optical Performance

Code	Power [W]	Systems Lumens [lm]	Luminaire Lumens [lm]	Efficacy [lm/W]	Size [mmxmm]	Spacing	W/m2	Calculated UGR max	LLMF TM21 L90 [hrs]	Lifetime TM21 L70 [hrs]
LM80 duration: 12,000hrs										
EL-HCL-1100	89	14750	9505	107	675x675	n/a	n/a	n/a	39,000* 43,000**	>72000

(\*) At an ambient temperature of 40°C.

(\*\*) At an ambient temperature of 25°C.

## Wiring options

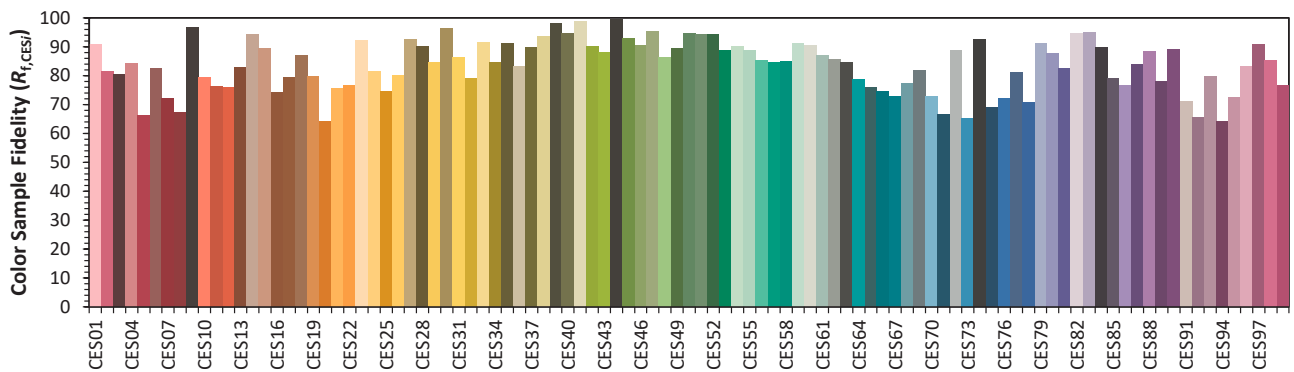
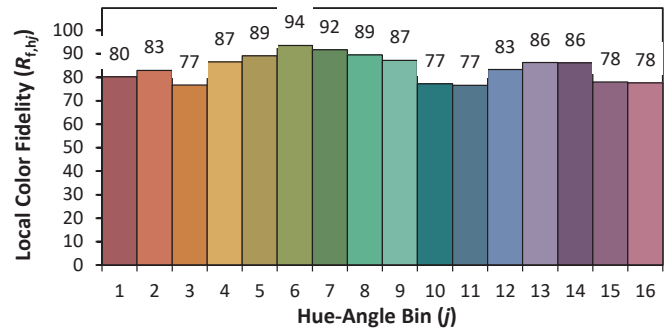
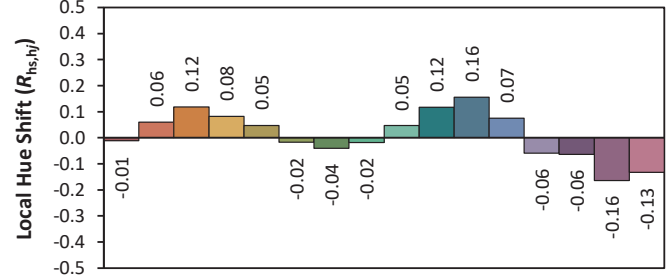
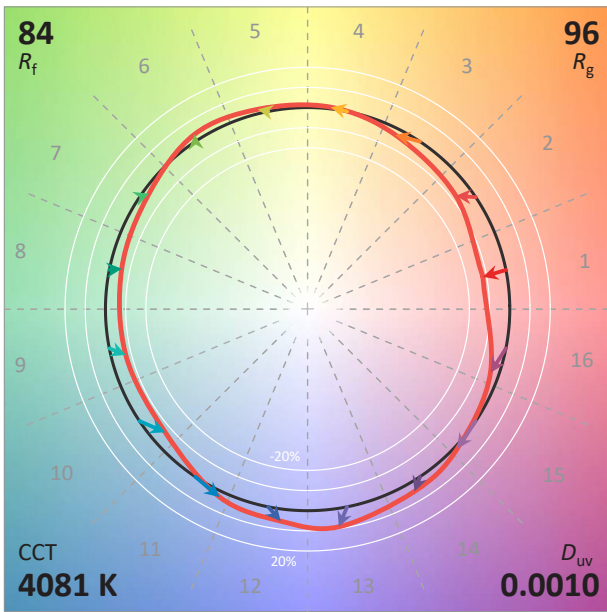
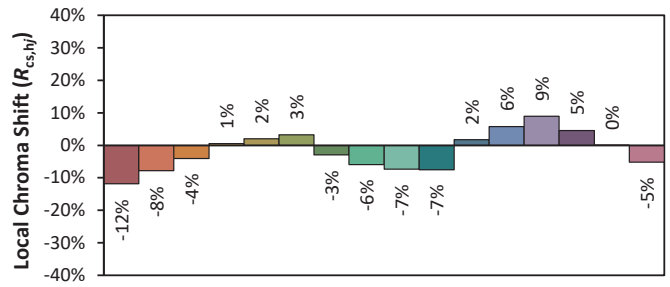
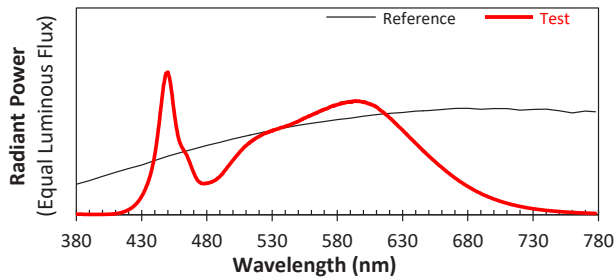
## Suffix

Standard	-000
DALI/STD terminal block	-200

# Herculed

## TM-30-18 Colour Rendition Report

EL-HCL-1100 - 89W 14750LM 840 675x675



**Notes:** This is a recommended method for displaying ANSI/IES TM-30-18 information.

x **0.3776**  
 y **0.3771**  
 u' **0.2231**  
 v' **0.5013**

CIE 13.3-1995 (CRI)	
R <sub>a</sub>	83
R <sub>g</sub>	8

Colors are for visual orientation purposes only. Created with the ANSI/IES TM-30-18 Calculator Version 2.00.