

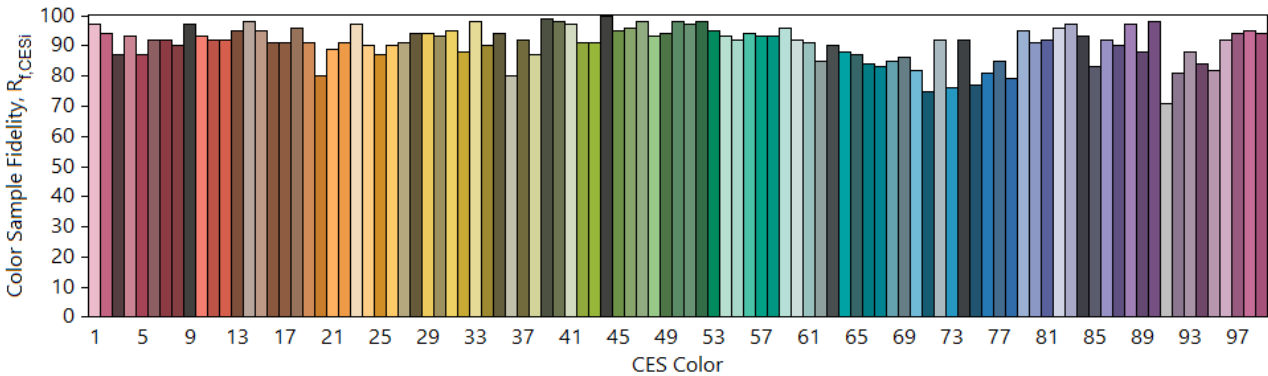
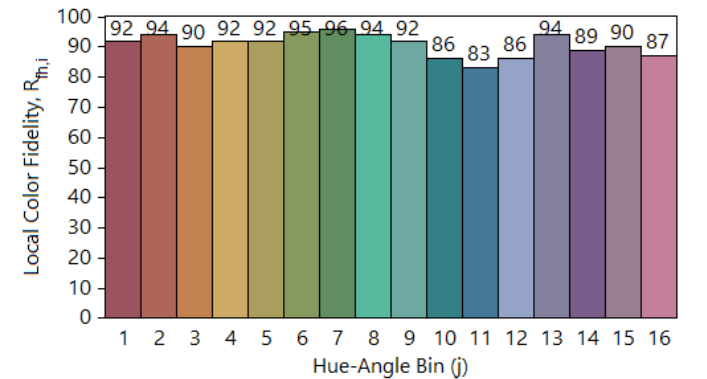
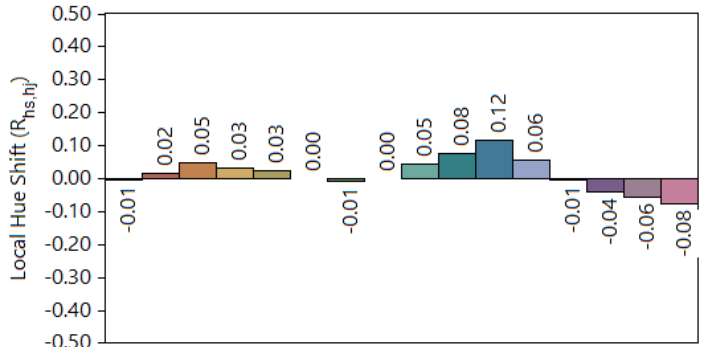
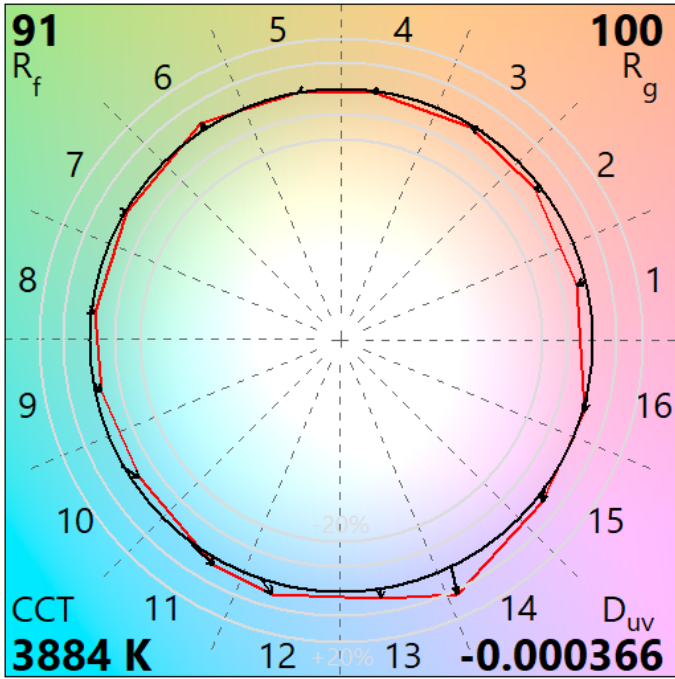
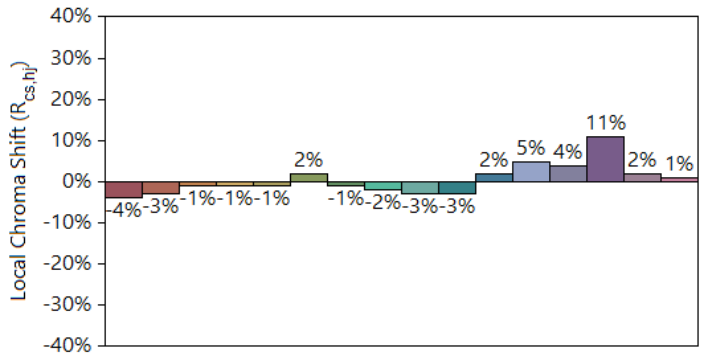
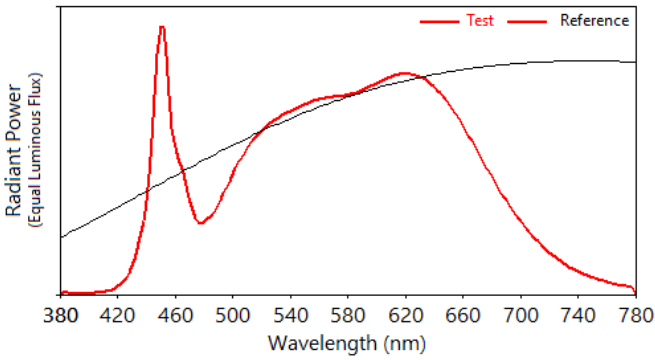
IES TM-30-18 Color Rendition Report

Source: ELA-10832-S-A

Manufacturer: ELA

Date: Monday August 22 14:30:23 2022

Model: ELLE Opal 940 High Power Direct



Notes: Results applicable to ELLE Opal 4000K CRI90 Direct variants.

x 0.385396
 y 0.378985
 u' 0.227472
 v' 0.503298

CIE 13.3-1995
(CRI)
R_a 93
R_g 72

Colors are for visual orientation purposes only.

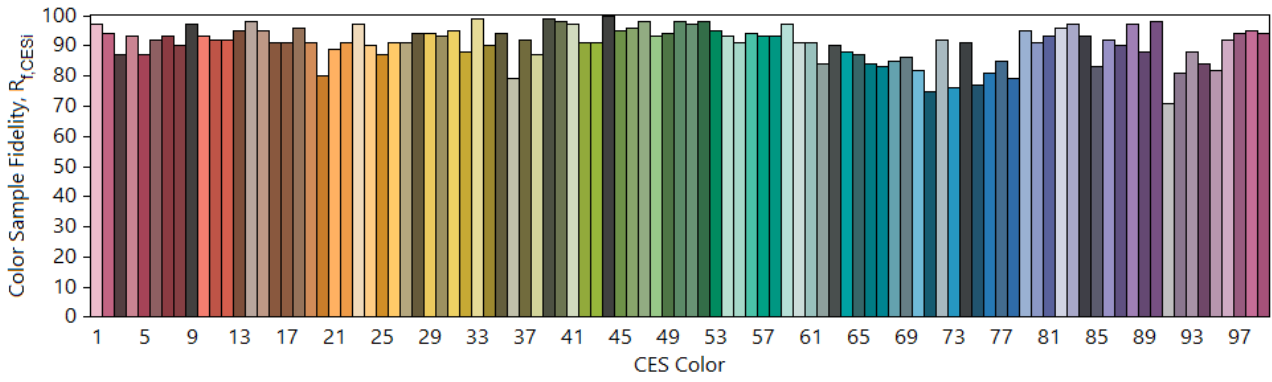
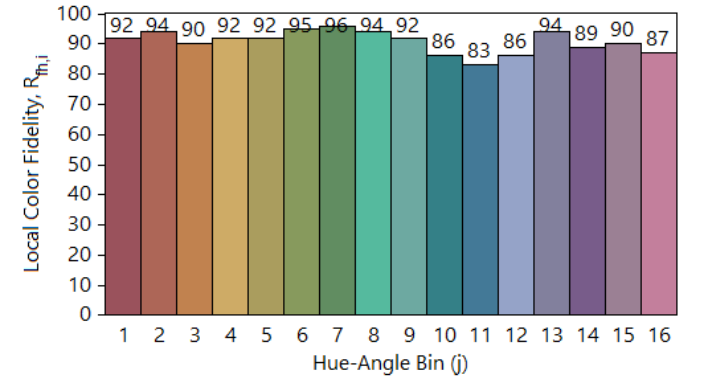
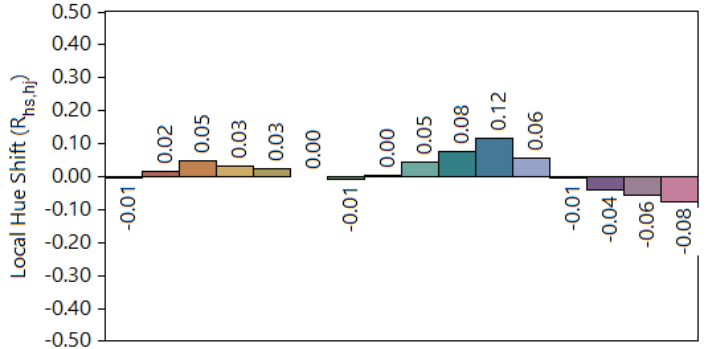
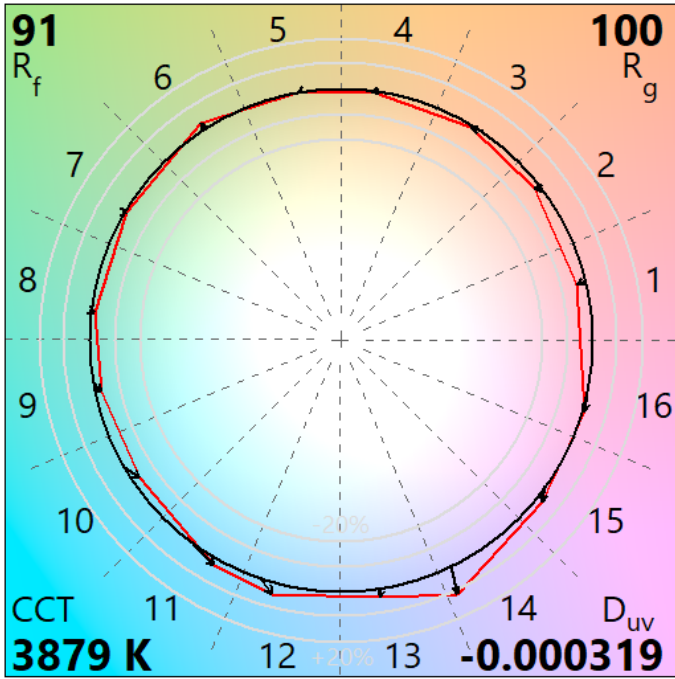
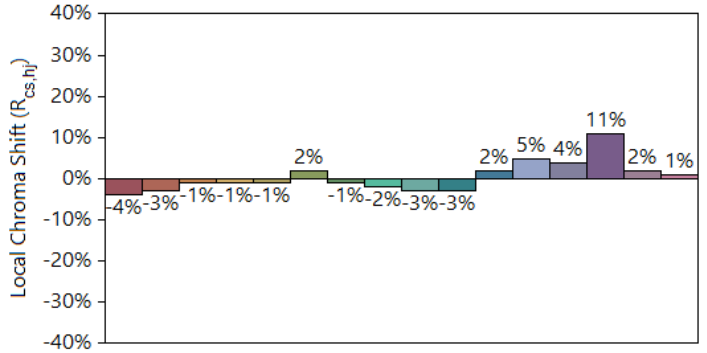
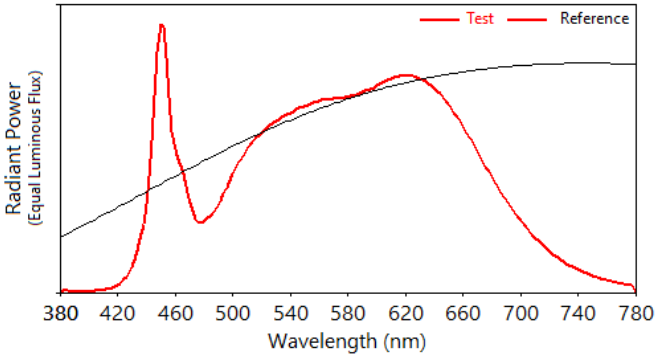
IES TM-30-18 Color Rendition Report

Source: ELA-10885-S-B

Manufacturer: ELA

Date: Tuesday August 23 15:43:20 2022

Model: ELLE Opal 940 High Power Direct+Indirect



Notes: Results applicable to ELLE Opal 4000K CRI90 Direct+Indirect variants.

x 0.385698
 y 0.379267
 u' 0.227557
 v' 0.503466

CIE 13.3-1995
(CRI)
R_a 93
R_g 73

Colors are for visual orientation purposes only.