

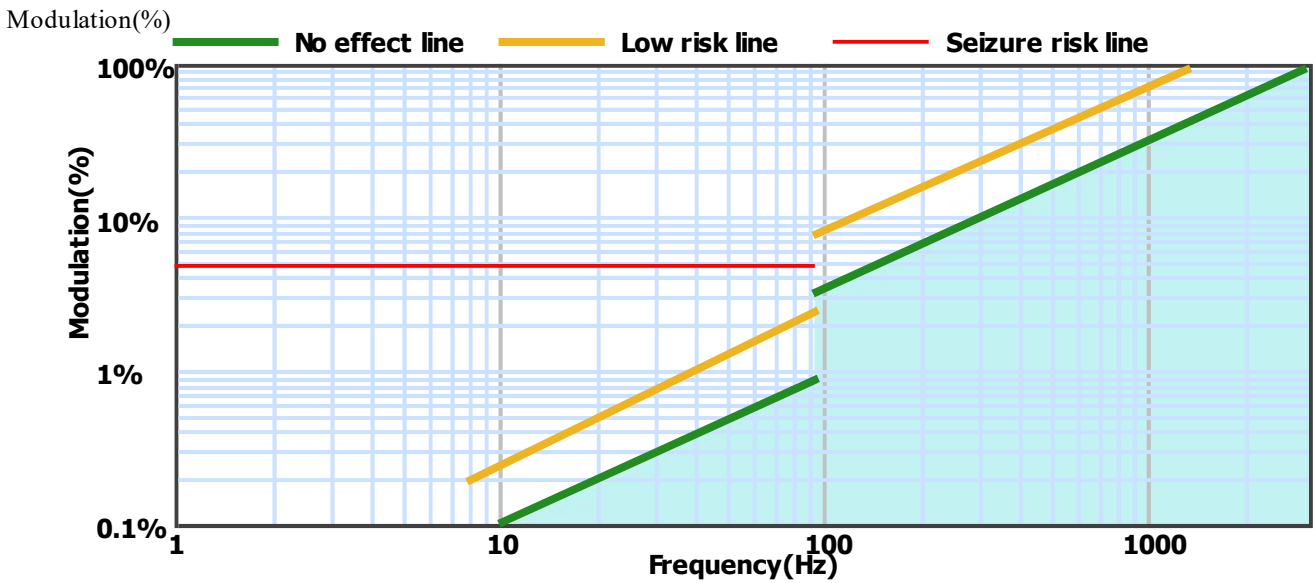
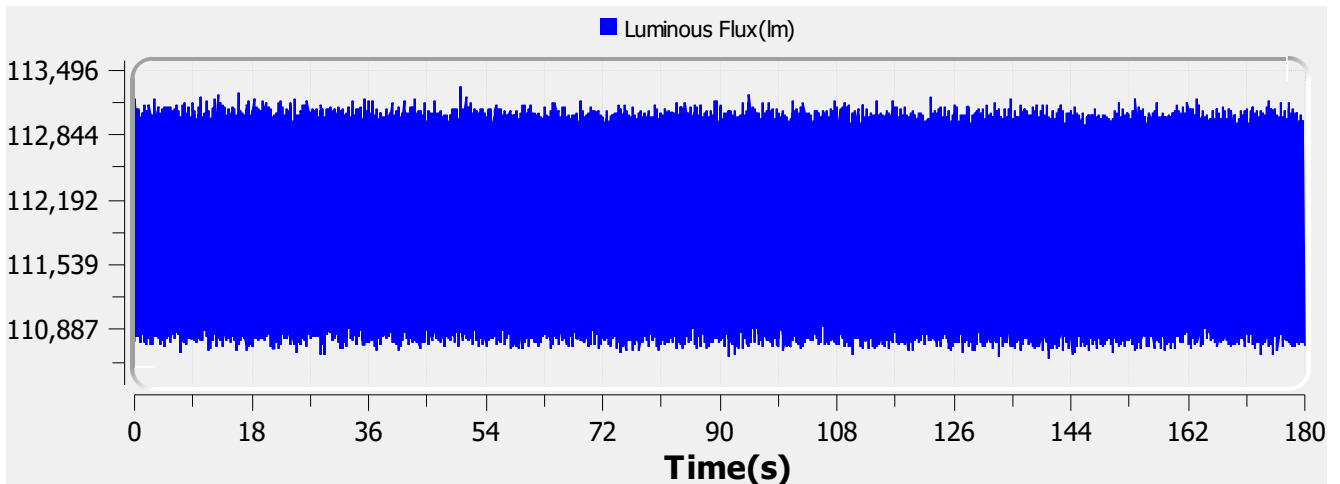
Flicker Test Report

Test condition

Photometric Type Luminous Flux(lm) Test range: Range2 Sampling Mode: Software
 Samplerate: 20 kS/s Sampling Time: 180.00 s

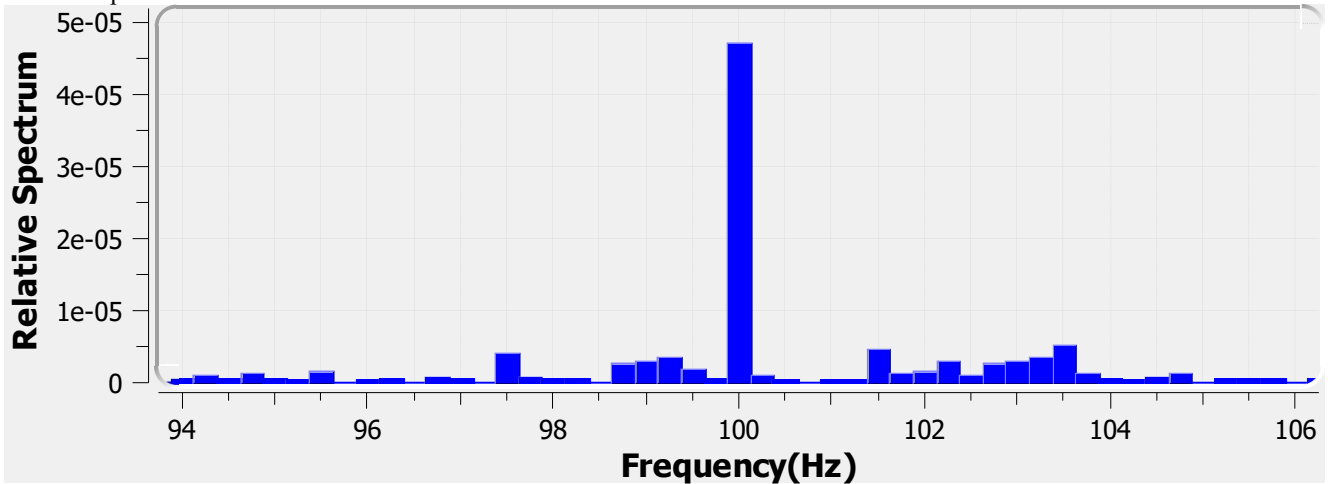
Test Wave

Local Waveform(0.000-180.000s)



| | | | |
|------------------------|------------------|---------------|---------------------------|
| Name: | CIRCADIA ET 30W | Type: | LUMINAIRE |
| SN: | ELA-CIR-1127-254 | Manufacturer: | Eagle Lighting Australia |
| Tester: | Frank Magdic | Sample time: | 2020-5-18 21:49:16 |
| Lamp base orientation: | Horizontal | Description: | |
| Remark: | | Standard: | IESNA 2000,CIE TN 006,etc |

Relative Spectrum Waveform



Test Result

| | | | | | |
|-------------------------|-----------|-------------------------|----------------------------------|----------------------|-----------|
| Avg(lm): | 112.029 k | Max(lm): | 113.319 k | Min(lm): | 110.601 k |
| IEC-Pst [10KS/s] | | | | | |
| Pst: | 0.060 | Result: | very acceptable | | |
| CA CEC | | | | | |
| PAM: | 1.214% | PAM(40Hz): | 0.083% | PAM(90Hz): | 0.239% |
| PAM(200Hz): | 0.576% | PAM(400Hz): | 0.572% | PAM(1000Hz): | 0.602% |
| ASSIST | | | | | |
| Flicker Index: | 0.002 | Percent Flicker: | 0.853% | d: | 0.000% |
| a: | 0.000 | MP: | 0.0 | fb: | 0.000Hz |
| DP: | 0% | Acceptability: | no consider stroboscopic effects | | |
| IEEE Std 1789 | | | | | |
| NM1: | 0.033 | NM2: | 0.080 | Module Depth: | 0.853% |
| Risk level: | No effect | | | | |
| CIE SVM | | | | | |
| SVM: | 0.004 | Visibility: | Not Visible | | |

| | | | |
|-------------------------------|------------------|----------------------|---------------------------|
| Name: | CIRCADIA ET 30W | Type: | LUMINAIRE |
| SN: | ELA-CIR-1127-254 | Manufacturer: | Eagle Lighting Australia |
| Tester: | Frank Magdic | Sample time: | 2020-5-18 21:49:16 |
| Lamp base orientation: | Horizontal | Description: | |
| Remark: | | Standard: | IESNA 2000,CIE TN 006,etc |