

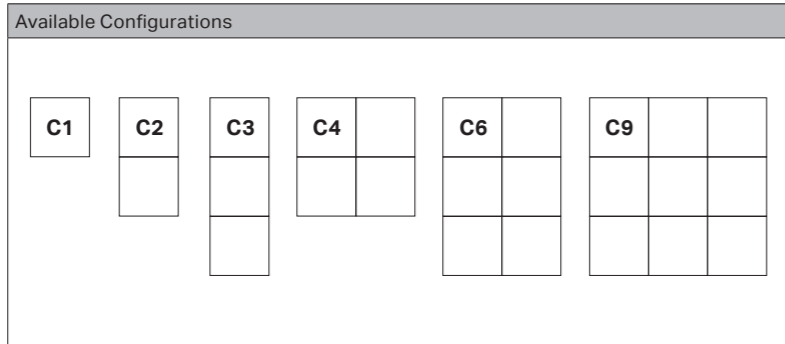


Aureled Vista

A slimline LED luminaire with a printed acrylic diffuser.

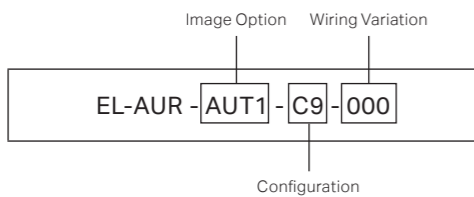
Aureled Vista

Product Code	Description	(Nom) Dimensions			
		A	B	C	D
AURELED VISTA EXPOSED T-BAR					REMOTE GEAR
EL-AUR-____-C1-____	Aureled LED C1	600	600	45	40
EL-AUR-____-C2-____	Aureled LED C2	600	1200	45	40
EL-AUR-____-C3-____	Aureled LED C3	600	1800	45	40
EL-AUR-____-C4-____	Aureled LED C4	1200	1200	45	40
EL-AUR-____-C6-____	Aureled LED C6	1200	1800	45	40
EL-AUR-____-C9-____	Aureled LED C9	1800	1800	45	40



PLEASE NOTE: If you would like to use an alternative image or an alternative configuration, please inform us and we will provide you with the required image specifications.
P.O.A

Wiring Variation	Suffix
Standard	-000
DSI/STD terminal block	-100
DALI/STD terminal block	-200
Standard/Fused terminal block	-400
DSI/Fused terminal block	-500
DALI/Fused terminal block	-600



The Aureled Vista has been developed with healthcare environments in mind. The Aureled Vista is available with a range of different imagery designed to promote a relaxing and reassuring environment for patients.

Using creative lighting solutions creates a non-institutional feel that puts patients at ease and makes it more likely that they relax and focus on healing.

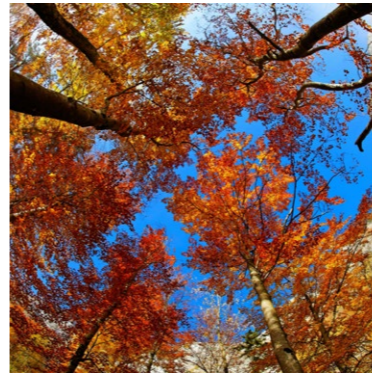
The Aureled Vista can be a focal and discussion point for young children undergoing medical examinations. By giving patients something to concentrate on they are less likely to become agitated.

Designed and constructed with a shallow 45mm profile with remote driver, the Aureled Vista will slide into confined spaces. Coupled with a detachable gearbox incorporating a plug-and-play connector this luminaire is the perfect solution for locations where there are multiple services installed inside the ceiling space.

Once installed, the gearbox can be detached from the luminaire housing as required whether for upgrading to dimming or maintenance.

Available with:

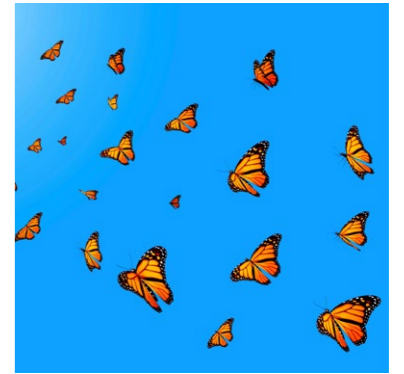
- DSI Dimming
- DALI Dimming
- Emergency
- Colour Temperature 4k
- Restraint kit



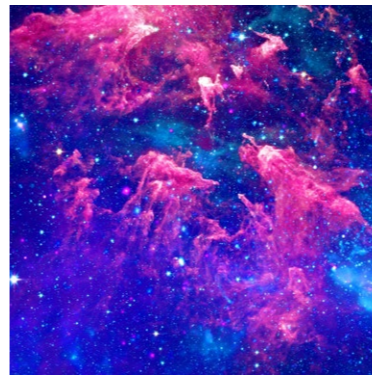
AUTUMN 1 (AUT1)



SKY 1 (SKY1)



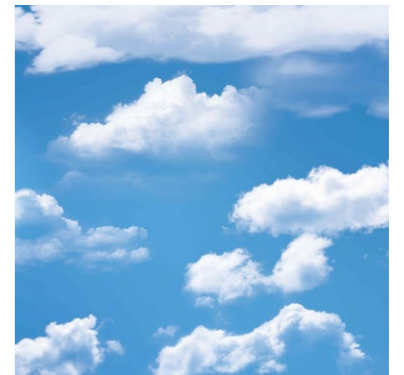
BUTTERFLY 1 (BUT1)



GALAXY 1 (GAL1)



OCEAN 1 (OCE1)



SKY 2 (SKY2)



A Fagerhult Group Company

Contact us today

<https://eagle.lighting>

eagle@eaglelighting.com.au

Australia

Vic (Head Office)

17-19 Jets Court
Melbourne Airport 3045
(03) 9344 7444

NSW

Level 1, 71-73 Alexander St
Crows Nest 2065
(02) 9420 5799

QLD

53 Caswell Street
East Brisbane 4169
(07) 3891 0744

ACT

0411 889 406

WA (Distributor)

H.I.Lighting
(08) 9377 1322

SA (Distributor)

Buckford Illumination Group
0448 064 412

TAS (Distributor)

Southern Lighting
(03) 6231 5599

New Zealand

Auckland (Head Office)

Ground Floor,
82 Wyndham Street
Auckland Central 1010
0800 324 374

Wellington

021 597 900

Christchurch

Unit 4
107 Wrights Road
Christchurch 8024
021 655 609



MEMBER 2021/22

Proud member of



DESIGN TESTED MANUFACTURED

