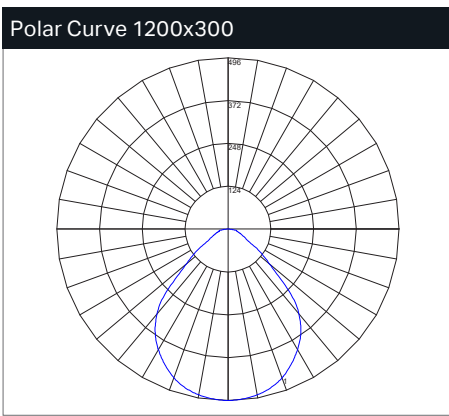
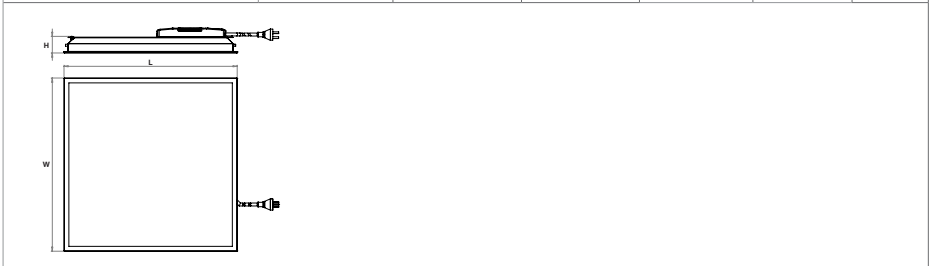




Key Family Details	
Optical System:	Glare reducing delta diffuser
Mounting Type:	Exposed T-Bar Recessed
Finish Options:	Standard white
System Warranty:	5 years
CCT:	4000K
CRI (Ra):	90+
R9:	70+
COI Compliant:	Yes (COI<=1.5)

Mechanical Drawing						
Physical Parameters	Luminaire Dimensions			Cutout Size		Weight
Code	L [mm]	W [mm]	H [mm]	CL [mm]	CW [mm]	[kg]
EL-AUR-3100-000	294	294	53	-	-	2.0
EL-AUR-3101-000	594	294	53	-	-	3.5
EL-AUR-3102-000	594	294	53	-	-	3.5
EL-AUR-3103-000	593	593	56	-	-	4.5
EL-AUR-3104-000	593	593	56	-	-	4.5
EL-AUR-3105-000	593	593	56	-	-	4.5
EL-AUR-3106-000	1194	294	53	-	-	4.5
EL-AUR-3107-000	1194	294	53	-	-	4.5



Maximum Candela = 496cd/klm  
 Located At Horizontal Angle = 67.5, Vertical Angle = .5

### Application

Demanding commercial lighting applications require lighting solutions and luminaires with outstanding performance characteristics. With the conscious decision of light quality and performance in mind Aureled delivers across arrange of applications.

### Design

Where too much is just right. Aureled encompasses a range of advanced lens and LED technology together with innovative design features to deliver balanced and harmonious lighting conditions within a space. Aureled is manufactured in Australia to match and exceed world best practice.

### Optics:

The advanced glare reducing delta diffuser and combined masking agent eliminates any distracting LED micro points and controls luminance distribution at critical viewing angles. Aureled delivers enhanced glare free lighting solutions.

### Controls:

In a carbon constrained world, product control options, operational control, sustainability and optimised material manufacturing techniques are critical considerations in product specification. The extensive features of Aureled meet the highest standards.

### Circadian Lighting:

Quality of light is an inherent element of wellness, productivity, vitality, creativity and satisfaction in any workplace. The combined performance characteristics of Aureled ensures the visual environment created will support and enhance the experience for people occupying a space.

### Installation:

The shallow profile of Aureled is the perfect solution in ceiling spaces where recess depth is confined.

### Notes:

- ORT Enabled
- Surface Mount
- Plaster Recess Kit
- Restraint kit
- Tuneable White



- Lux Target Illuminance									
Code	CCT	Power [W]	Systems Lumens [lm]	Luminaire Lumens [lm]	Efficacy Initial [lm/W]	Nominal Size [mmxmm]	Target Spacing	UGR	TM21 L90 Lifetime [hrs]
									LM80 DURATION 10,000 hrs
EL-AUR-3100-000	4000K	12	1,589	1,184	98	300x300	-	-	43,000
EL-AUR-3101-000	4000K	12	1,600	1,240	107	600x300	-	-	43,000
EL-AUR-3102-000	4000K	13	1,906	1,459	109	600x300	-	-	43,000
Restraint Kit - 4 x gripple, 2 x 2m wire									

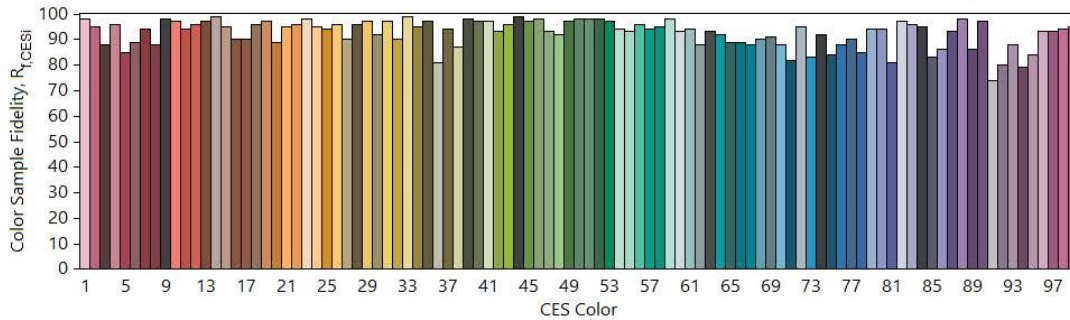
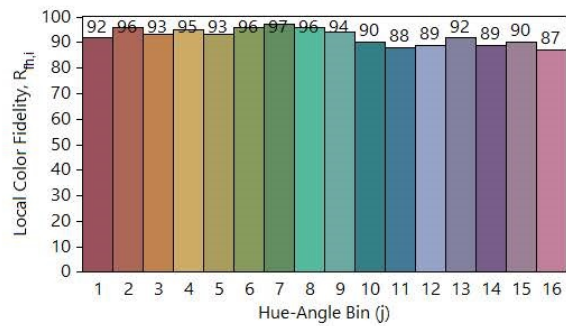
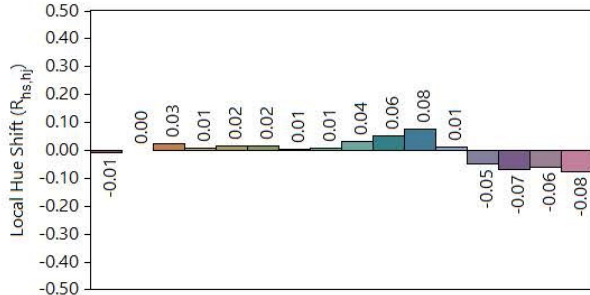
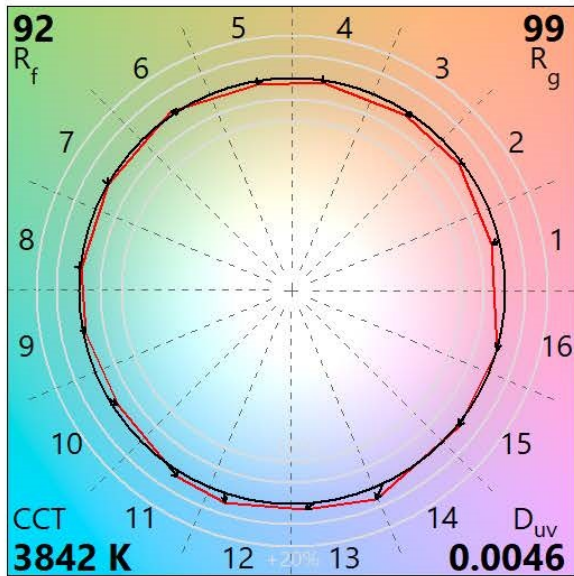
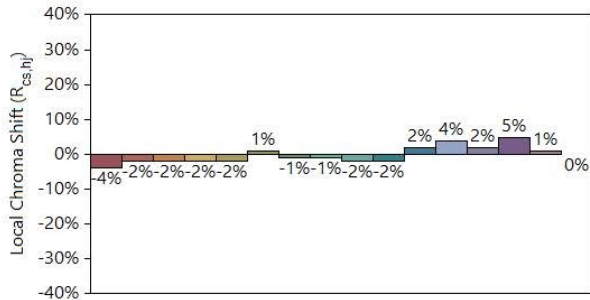
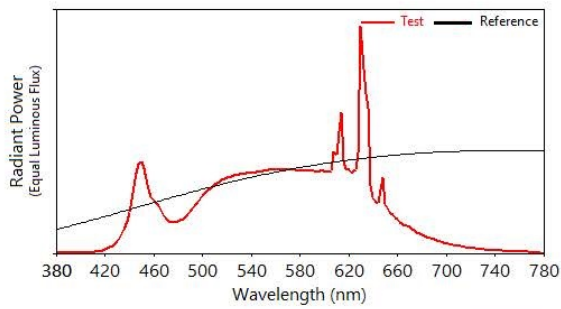
330 Lux Target Illuminance									
Code	CCT	Power [W]	Systems Lumens [lm]	Luminaire Lumens [lm]	Efficacy Initial [lm/W]	Nominal Size [mmxmm]	Target Spacing	UGR	TM21 L90 Lifetime [hrs]
									LM80 DURATION 10,000 hrs
EL-AUR-3103-000	4000K	19	2,864	2,336	124	600x600	2.4m x 2.4m	16	43,000
EL-AUR-3104-000	4000K	27	4,291	3,524	129	600x600	3.0m x 3.0m	19	43,000
EL-AUR-3106-000	4000K	19	3,114	2,399	126	1200x300	2.4m x 2.4m	16	43,000
Restraint Kit - 4 x gripple, 2 x 2m wire									

410 Lux Target Illuminance									
Code	CCT	Power [W]	Systems Lumens [lm]	Luminaire Lumens [lm]	Efficacy Initial [lm/W]	Nominal Size [mmxmm]	Target Spacing	UGR	TM21 L90 Lifetime [hrs]
									LM80 DURATION 10,000 hrs
EL-AUR-3105-000	4000K	34	5,268	4,369	128	600x600	3.0m x 3.0m	19	43,000
EL-AUR-3107-000	4000K	23	3,741	2,900	126	1200x300	2.4m x 2.4m	19	43,000
Restraint Kit - 4 x gripple, 2 x 2m wire									

Wiring options	Suffix
Standard	-000
DALI	-200
Maintained Emergency	-800
DALI Monitored Emergency	-801
Organic Response (SN3)	-950

## TM-30-18 Colour Rendition Report

EL-AUR-3105-xxx



Notes: AURELED ET 34W 5250LM 940 DELTA 600X600 variants

x 0.3914  
y 0.3935  
u' 0.2256  
v' 0.5103

CIE 13.3-1995

(CRI)

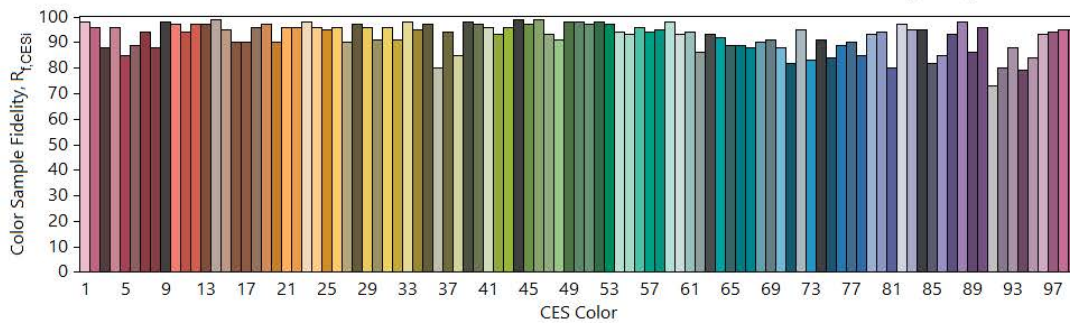
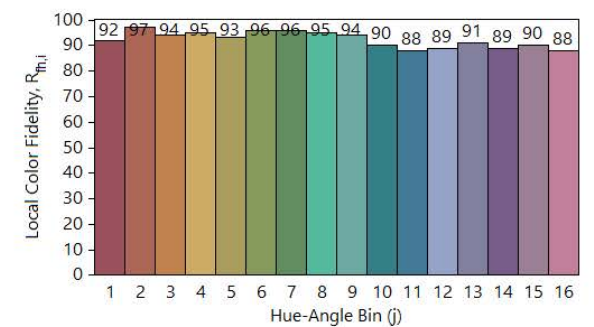
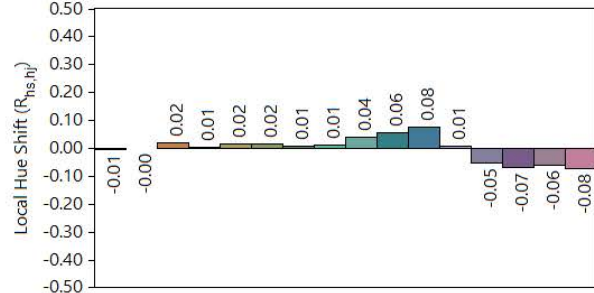
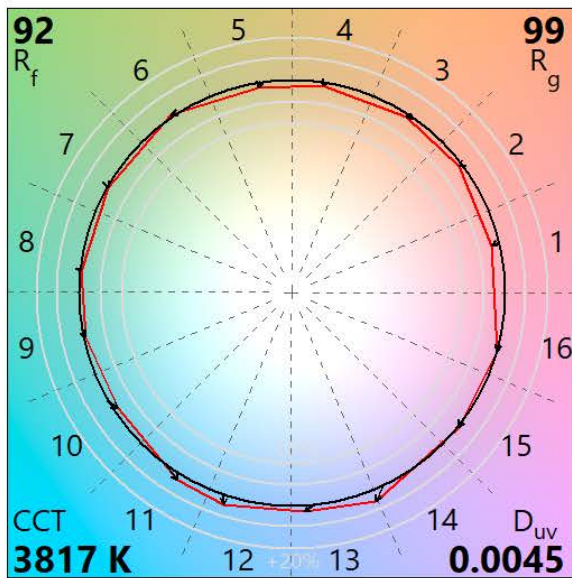
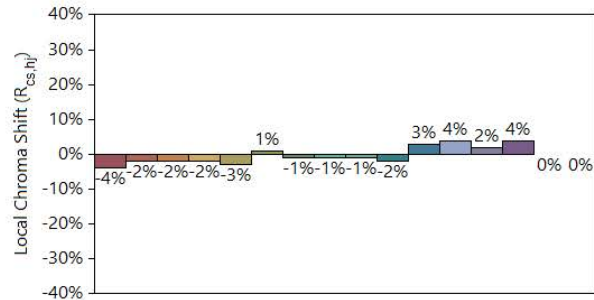
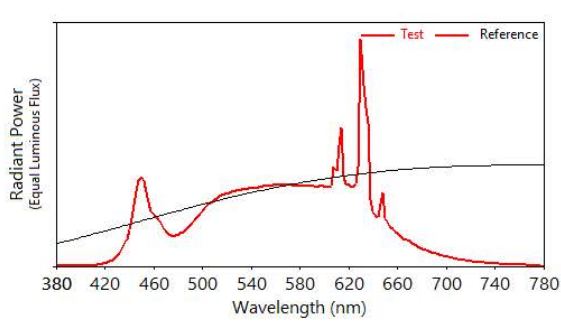
R<sub>a</sub> 94

R<sub>g</sub> 71

Colors are for visual orientation purposes only.

## TM-30-18 Colour Rendition Report

EL-AUR-3107-xxx



Notes: AURELED ET 23W 3750LM 940 DELTA 1200X300 variants

x 0.3926  
y 0.3940  
u' 0.2262  
v' 0.5108

CIE 13.3-1995

(CRI)

R<sub>a</sub> 95

R<sub>g</sub> 73

Colors are for visual orientation purposes only.