



Lighting the Modern Educational Facility

Putting your institution in the best possible light

[eaglelightingaustralia](http://eaglelightingaustralia.com)



Students spend around 27,000 hours studying at school from the ages 5 to 18

The education landscape is unique due to the diverse environments in which buildings can be situated; you can find anything from inner city vertical schools, private facilities on acreage through to schools in rural towns.

These diverse and demanding environments require a range of lighting options that will last for the life of installation and which are maintenance free, reliable and energy efficient.

To ensure optimal luminaire performance and value for money, we offer a range of luminaires that meet the highest standards in LED boards, componentry, drivers, optics and manufacturing, while remaining competitive for any budget.

Regardless of the application area, selecting quality luminaires and controls, backed by an established Australian brand, is essential.

The benefits for students, staff, and the planet are easy to see.

In the following pages, we present a range of lighting solutions for key spaces in a typical education facility - whether that be a new build, refurbishment, or refresh.

We appreciate that every project is unique and so we present some general ideas for lighting a standard educational facility to stimulate thinking.

Our wide range of luminaires offer solutions for all learning spaces, giving you the creative freedom needed to enhance your education project - delivering energy-efficient lighting solutions coupled with a variety of controls solutions.

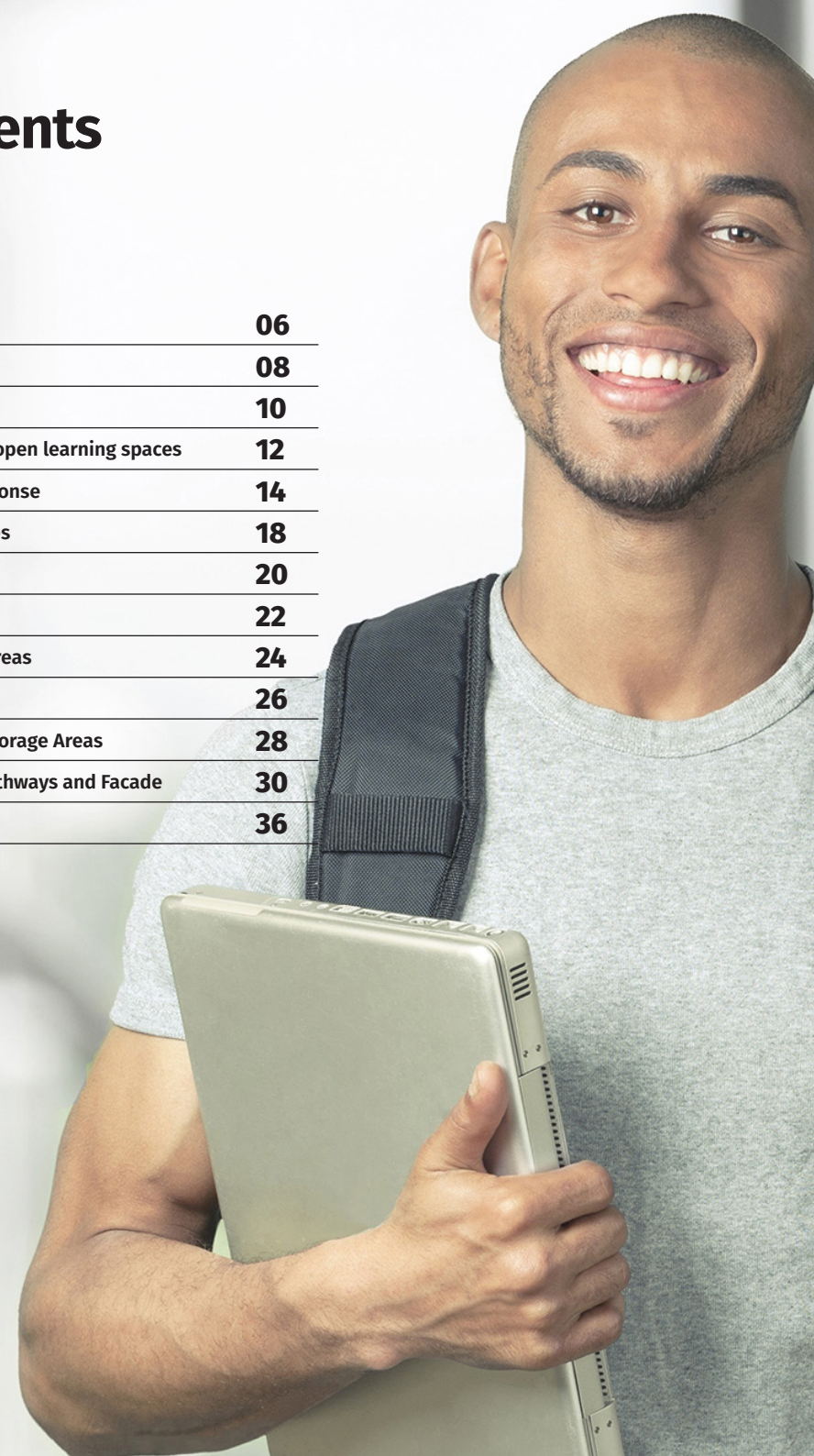
We look forward to discussing with you how Eagle Lighting can provide lighting solutions for your education project.



SEE OUR COMPLETE RANGE AT EAGLELIGHTING.COM.AU

Contents

Reception	06
Art/Display	08
Classrooms	10
Flexible and open learning spaces	12
Organic Response	14
Admin/ offices	18
Science Lab	20
Sports Hall	22
Circulation Areas	24
Stairwells	26
Amenities/Storage Areas	28
Car Parks, Pathways and Facade	30
Case Studies	36





Reception

The entrance and reception area is a key space for any school as it establishes the visitor's first impressions. Lighting then should be welcoming and inviting, yet vibrant.

There is also an opportunity here to utilise decorative lighting to further enhance the building aesthetics.



Gaudi Circular



Dwide Pendant



Itza



Notor



Art/Display

For art displays, the lighting needs to make the students' efforts the hero, using CRI90+ to reproduce colour accurately. Our lighting solutions add to the sense of pride and achievement the students, teachers and families will feel when appreciating the finished product.

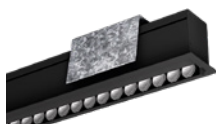
Use spotlights to accent, wall washers to achieve a uniform wash of light across the entire vertical surface, or a combination of both.



Touch Mini



Pleiad G4 Wallwasher



Mars Wallwasher



ComboLINE

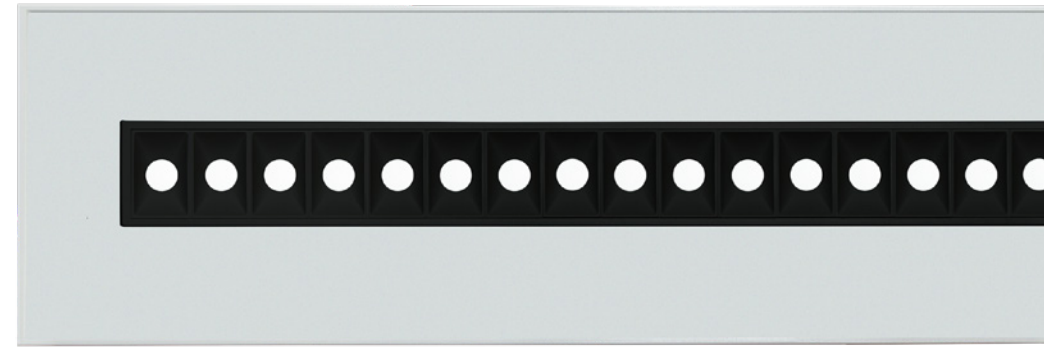




Classroom

Classrooms are the centre of any learning establishment and the most commonly occupied space.

The activities undertaken in these learning areas are many and varied and, regardless of the task or age of the user, lighting must accommodate this diversity.



Circadia



Indigo Maestro



Enviro Evoline



Allfive



Flexible and open learning spaces

A multiple-use space where stimulating colours and good lighting design are essential, regardless of the time of day.



Notor 36

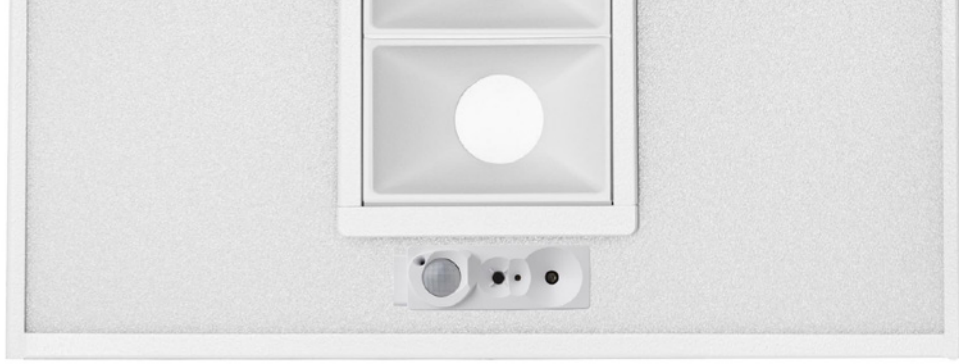


Notor 65



Cirkel





Organic Response

A completely intelligent, scalable and wireless lighting control solution.



Many of our luminaires are available with Organic Response lighting controls solution.

With the Organic Response integrated sensor node, your built environment gains the benefits of an intelligent lighting control solution, without the higher costs associated with legacy-cabled systems or specialist commissioning during and post-handover.

With wireless communication and presence detection out-of-the-box, simply connect to the power, and your space is immediately operational.

Smart, sustainable and for the long-term.

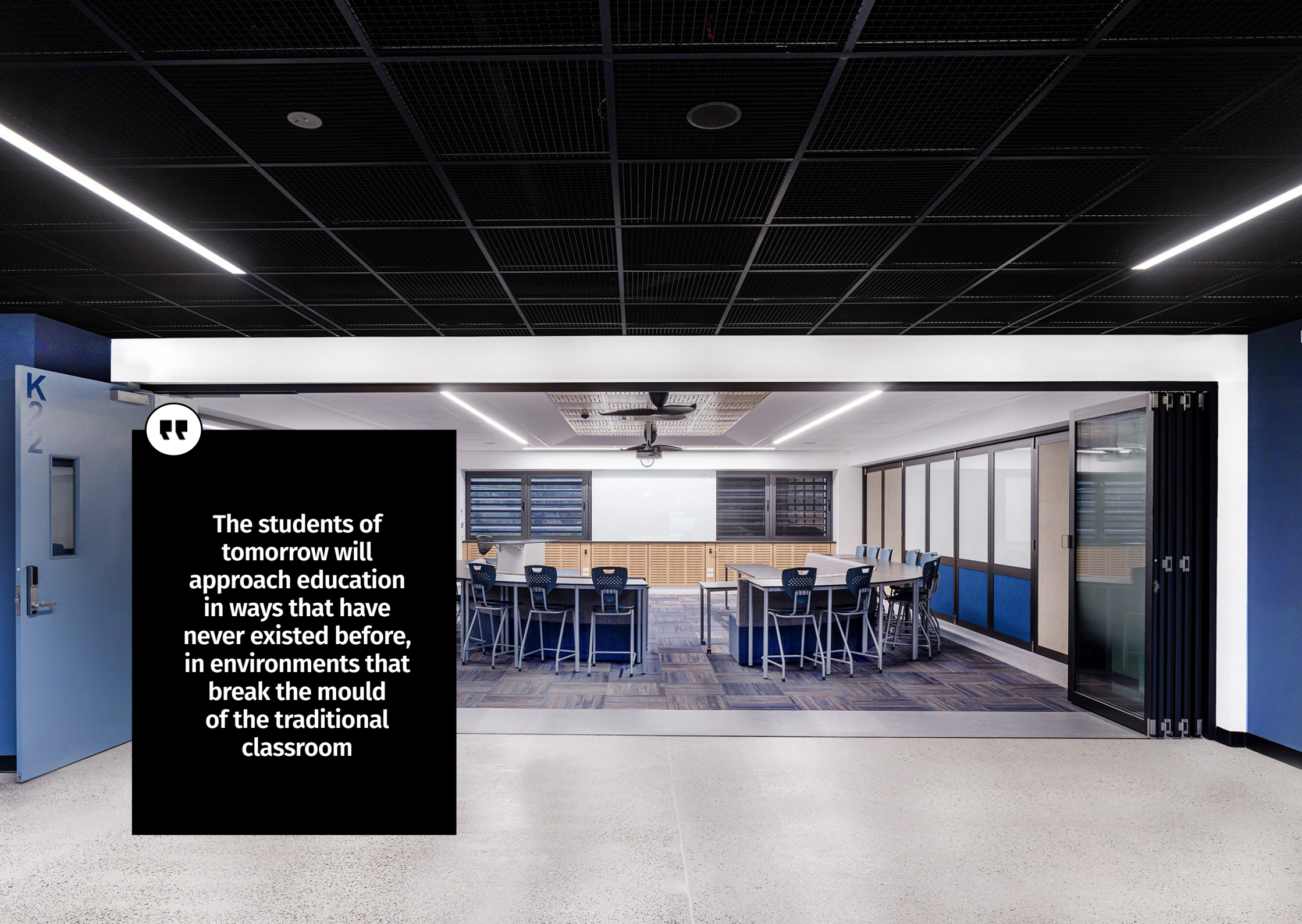
As an 'out of the box' lighting controls solution the ORT offers:

- Plug & Play – Intelligent lighting & control out of the box
- Intuitive App based point & apply configuration
- Set Min & Max Levels
- Set zones
- Set daylight dimming
- Implement corridor, link zones and other advanced control strategies
- Deliver greater efficiency, better occupant comfort and safety
- Minimal to no extra wiring, DALI functionality without the Addressing & Readdressing
- Intelligent wireless control without the need for specialists system integrators
- Install wireless local control panels for dimming and scenes
- Electrical contractor – FM – user friendly. Intelligent lighting control delivered intuitively.

Eagle Lighting luminaires with integrated OR nodes are loaded with an abundance of technology beyond lighting & control.

Install Today - ready for tomorrow

	Organic Response		
	Out of the box	IoT Connected	Legacy DALI cabled controls
 Plug & play	•	•	
 Wireless	•	•	
 Intuitive app	•	•	
 Wireless wall-switch	•	•	
 Min/max levels	•	•	•
 Daylight harvesting	•	•	•
 Occupancy sensor	•	•	•
 Scheduling		•	•
 Portal heat mapping		•	
 Open API		•	
 Centralised operations		•	•
 Reporting and Maintenance		•	•
 Hi-level BMS		•	•
 Hi-level IP integration		•	
 Feature upgradeable – over the air		•	



The students of tomorrow will approach education in ways that have never existed before, in environments that break the mould of the traditional classroom



Administration/Offices

Good lighting in the office contributes to a positive work environment where everyone feels comfortable and motivated. It is important that the luminaires selected are designed for visual comfort and to avoid glare for screen work.



Pleiad G4 165



Dwide Pendant



Indigo Maestro



Science Lab

We have a range of luminaires to meet the requirements of any science lab – whether you require specialist luminaires where protection against contamination is required or a general lighting solution that provides high efficacy, exceptional lifetime and low glare values.



Cleanroom IP65



Vertex



Aureled



Notor Recessed Opal





Sports Hall

These multi-functional spaces need to be flexible enough to cope with a wide variety of sporting uses and lighting must be adaptable, consistent and robust.



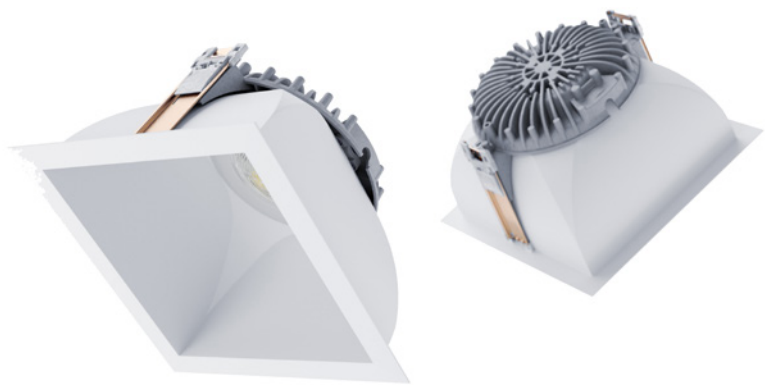
Excis LED



Densus LED



Hero



Circulation Areas

The circulation routes through a school are the main arteries taking pupils, staff and visitors around the facility.

Functionality and energy efficiency is critical, with the primary purpose of the lighting to create safe and easy navigation.



Pleiad G4 165



Pleiad G4 Surface Mounted 128



Torino



Notor





Stairwells

We have a range of energy efficient, attractive and robust luminaires for these circulation spaces.



CirCore



Densus LED



Discovery Evo



Amenities/Storage Spaces

Well-lit hygienic areas contribute to space that feels fresh and pleasant to visit. Light on ceilings and walls helps to define the room, while light above the washbasins ensures we can see ourselves in a clear and comfortable light, without glare.



Cirkel



Pleiad G4 125



Discovery Evo



Allfive



RapidLED



Car Parks, Pathways and Façade

Outdoor environments must balance security, safety and energy efficiency while creating attractive environments that enhance both ambience and architecture.

Our range of energy efficient outdoor lighting solutions does just that - meeting code compliance, functionality, durability, safety, and security while creating great places for people.

Our low-maintenance, reliable solutions include luminaires for building façades, roofs, parking and public spaces.

The area around the facility entrance has both a welcoming and a guiding function. It is important that visitors are able to quickly recognise where entrance doors are and that stairs, ramps, and direction signs are well lit.

The road from bus stops and parking lots up to the education facility should stay on at all hours. Pole top fixtures provide good general light, while lower bollard's facilitate orientation on walkways and sidewalks. Façade lighting accentuates the building and softens the transition between the outside and inside. Wall and ceiling fixtures create a comfortable vertical light and accentuate the signage.

Eagle Lighting's access to global experts and products from Designplan, Simes, LED Linear and Fagerhult delivers a combined capability for outdoor lighting that is unmatched in Australia.

Safety on campus is a priority, especially at night. With late night classes or library study sessions, there are typically a number of people walking through campus at all hours of the night.

Things to consider –

- Minimise shadow to increase confidence
- 24/7 usage – cost and reliability
- Reliable/ low maintenance
- Tamper proof/ robust
- Minimise glare
- Aesthetically pleasing to further enhance the environment





Wall Perimeter



QuadEvo



Duomo



Tuscan Wall

Walkway/Steps



Skill

Façade



Movit

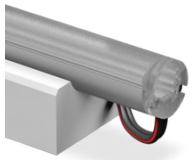


Zen



Xolum
Hydra IP67

Cove Lighting



XooCove IP40



Nike



Xooline

Outdoor Undercover



Ministage
Ceiling



Densus



Lobby Basic



Adonis IP67



Linilux

Carpark



Evolume





Case Study

Senior School Independent Learning & Resources Centre (K Block) Oxford Falls Grammar - NSW

Oxford Falls Grammar School is a co-educational private school for children from Kindergarten through to Year 12. Thirty years in existence, the school currently educates 1,100 students.

Project Background:

Block K (Senior School Independent Learning & Resources Centre) is an expansion to Oxford Falls Grammar School as part of its 2020 Strategic Plan.

The new Block K provides the school with eight additional General Purpose Learning Areas over two storeys, senior private study area, private study room, and amenities along with new undercover drop off and pick up zone.

Eagle Lighting supplied luminaires for classrooms, study areas, corridors, and breakout space, along with exterior lighting.

Completed: 2020

Luminaires supplied:

Notor

Enviro Evoline

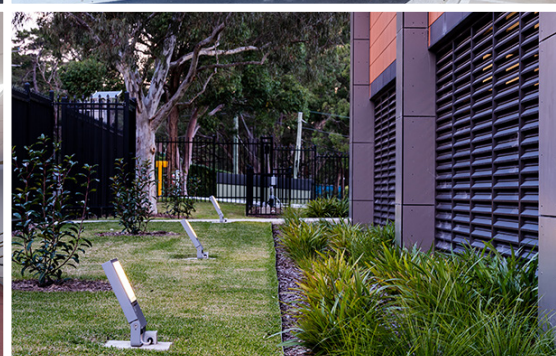
Densus

Stage Projector

Ministage

Movit

Stage Projector



Case Study

South Melbourne Park Primary School - VIC

Situated at the edge of Albert Park Lake, Melbourne, and housing the heritage-listed buildings of the former Albert Park Signal Depot – “the last remaining example of the Inter-War-style employed for Defence facilities in Melbourne during the 1930s,” - South Melbourne Park Primary School is home to 550 students.

The existing heritage buildings were repurposed for school use. The Drill Hall was adapted to house classrooms and a learning resource centre, while the Mess Hall houses administration and leadership spaces. Two former residences have been converted to music and arts houses. A new two-storey building with a large flat roof was also built on the site.

Awards:

2019 Association for Learning Environments (A4LE), Victoria Chapter Education Facility Planning Awards, Entire New Educational Facility, Commendation 2019 Victorian School Design Awards, Best Project above \$10M, Finalist
Completed: 2019

Luminaires supplied:

Notor 65 Opal
Cleanroom
Densus
Vertex
Pleiad G3
Excis LED





Case Study

Prahran High School - VIC

Squeezed onto the land which previously housed Swinburne University Windsor, the new four-storey school has a library and performing arts area on the ground floor, along with science, visual arts and food technology areas, a gym on levels one to three and a rooftop garden on level four.

The VSBA (Victorian School Building Authority), Project Architects Gray Puksand and Electrical Consultants Wood and Grieve Engineers (now part of Stantec) have successfully maximised the space available through careful planning and design.

The interior and exterior lighting concept design features a combination of lighting solutions from Fagerhult, Eagle Lighting Australia and Simes.

Completed: 2019

Luminaires supplied:

Notor 65 Delta

Notor Recessed

Opal Flush

Excis LED

Vertex

Densus LED

Cleanroom IP65 LED

Pleiad G3

Skill

Lobby

Walker



Putting your institution in the best possible light

An Australian-based industry leader with nearly 50 years' experience, Eagle Lighting leads the way in lighting and lighting control solutions in contemporary education environments.

We help deliver carefully-designed educational facilities that are sustainable, dynamic and efficient – key ingredients in attracting students, staff and partners in a highly-competitive global education market.

Our range of energy efficient luminaires supports optimum conditions for everyone in education settings, whether that's staff needing to work at peak performance or students who require a stimulating learning environment.

With expert knowledge, a deep global network and a commitment to R&D, we offer the reliability, customisation and responsiveness you need today, with the insight, knowledge and engineering capabilities to adapt to future challenges.



EAGLE LIGHTING AUSTRALIA

www.eaglelighting.com.au
eagle@eaglelighting.com.au

MELBOURNE**EAGLE LIGHTING VIC**

17-19 Jets Court
Melbourne Airport, VIC 3045
Phone +61 3 9344 7444

SYDNEY**EAGLE LIGHTING NSW**

Unit 4, 21 Mars Road
Lane Cove, NSW 2066
Phone +61 2 9420 5799

BRISBANE**EAGLE LIGHTING QLD**

53 Caswell Street
East Brisbane, QLD 4169
Phone +61 7 3891 0744

CANBERRA**EAGLE LIGHTING ACT**

Mobile +61 411 889 406

DISTRIBUTORS**TASMANIA****SOUTHERN LIGHTING & DISTRIBUTION**

34 Federal Street
North Hobart, TAS 7000
Phone +61 3 6231 5599
Fax +61 3 6231 5211

WESTERN AUSTRALIA**H.I. LIGHTING PTY LTD**

111 Broadway
Bassendean, WA 6054
Phone +61 8 9377 1322
Fax +61 8 9377 1761

SOUTH AUSTRALIA**H.I. LIGHTING PTY LTD**

14-16 Bailey St
St Marys SA 5042
Phone +61 8 8304 8500
Fax +61 8 8304 8501

NEW ZEALAND**FAGERHULT NEW ZEALAND**

www.fagerhult.com/nz
0800 324 374
customerservice@fagerhult.co.nz