

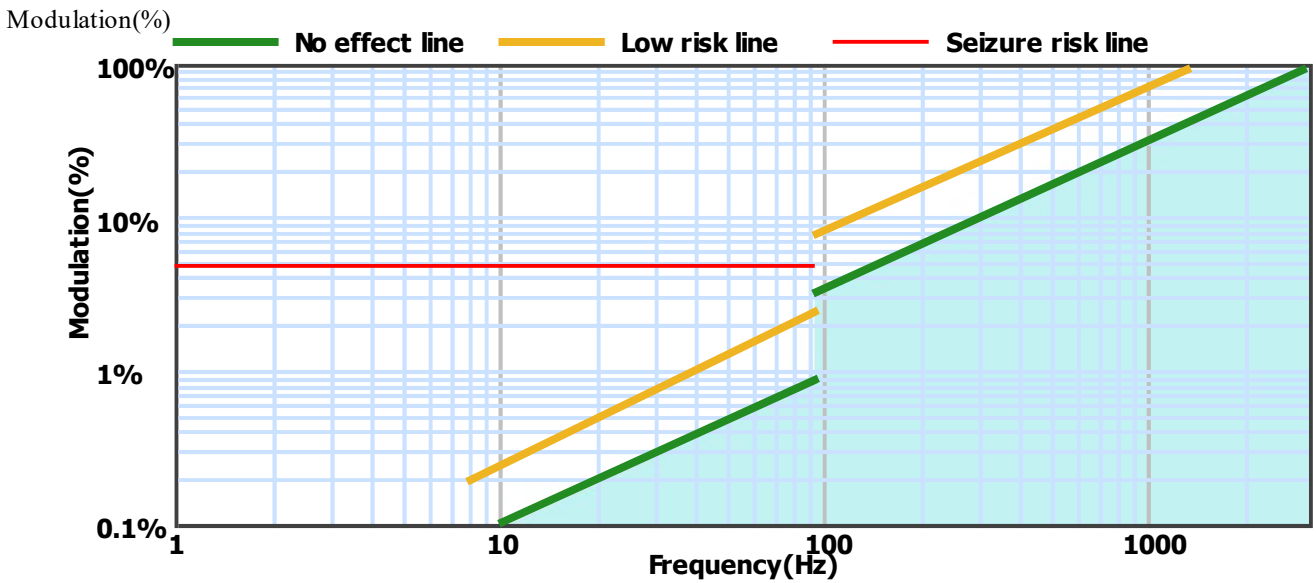
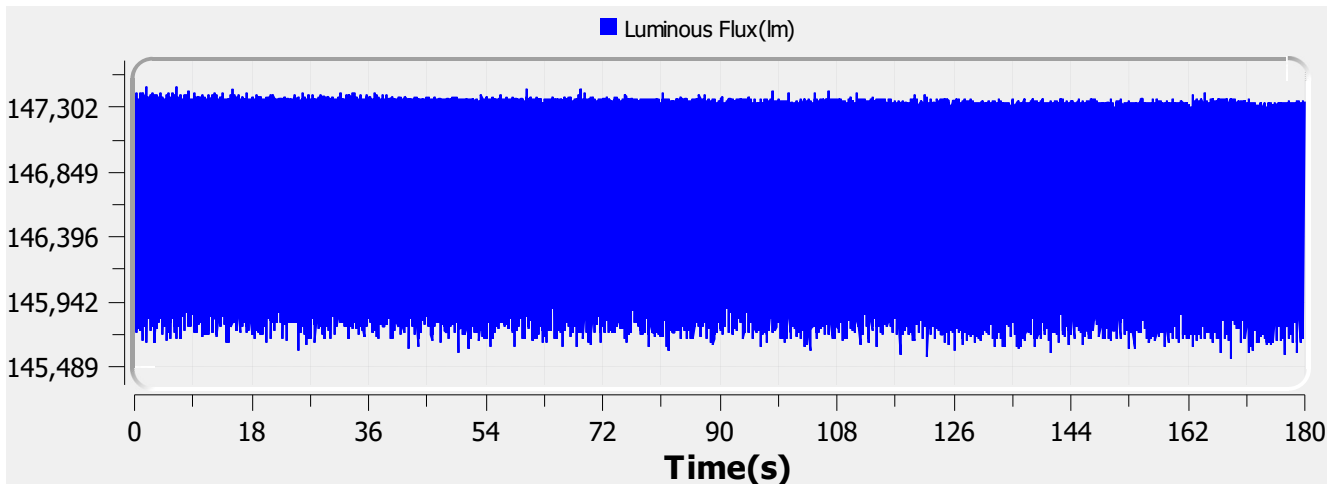
# Flicker Test Report

## Test condition

Photometric Type Luminous Flux(lm) Test range: Range2 Sampling Mode: Software  
 Samplerate: 20 kS/s Sampling Time: 180.00 s

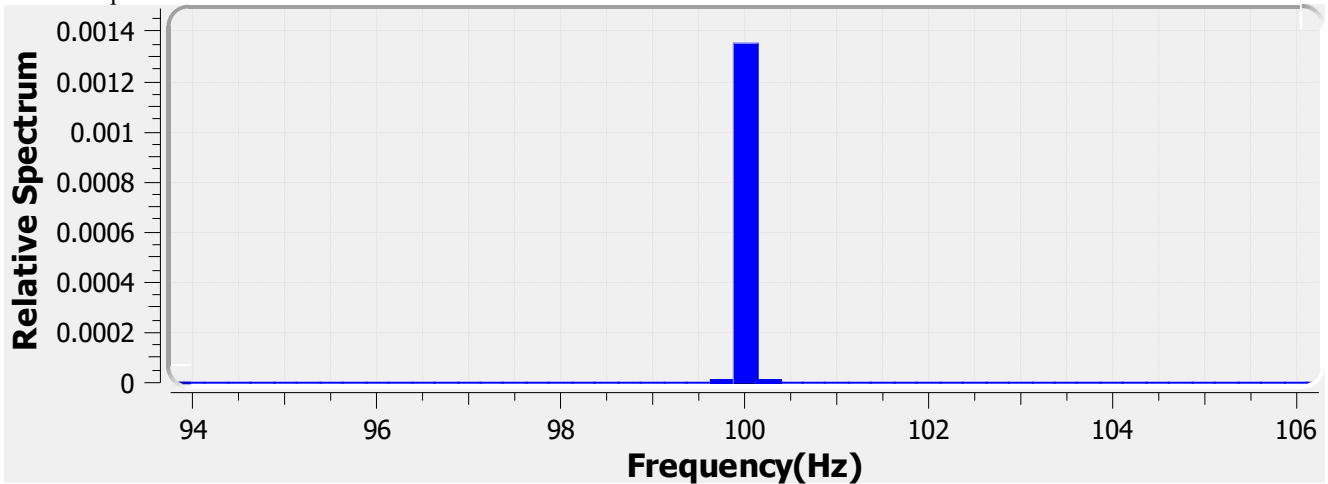
## Test Wave

Local Waveform(0.000-180.000s)



Name:	AURELED ET 19W 3100LM	Type:	LUMINAIRE
SN:	EL-AUR-3106-000	Manufacturer:	Eagle Lighting Australia
Tester:	Frank Magdic	Sample time:	2021-2-15 11:50:00
Lamp base orientation:	Horizontal	Description:	AURELED ET 19W 3100LM 940 DELTA 1200X300
Remark:		Standard:	IESNA 2000,CIE TN 006,etc

Relative Spectrum Waveform



### Test Result

<b>Avg(lm):</b>	146.688 k	<b>Max(lm):</b>	147.442 k	<b>Min(lm):</b>	145.553 k
<b>BASIC</b>					
<b>Frequency:</b>	100.000 Hz				
<b>IEC-Pst [10KS/s]</b>					
<b>Pst:</b>	0.015	<b>Result:</b>	very acceptable		
<b>CA CEC</b>					
<b>PAM:</b>	0.645%	<b>PAM(40Hz):</b>	0.021%	<b>PAM(90Hz):</b>	0.033%
<b>PAM(200Hz):</b>	0.414%	<b>PAM(400Hz):</b>	0.441%	<b>PAM(1000Hz):</b>	0.471%
<b>ASSIST</b>					
<b>Flicker Index:</b>	0.001	<b>Percent Flicker:</b>	0.458%	<b>d:</b>	0.000%
<b>a:</b>	0.000	<b>MP:</b>	0.0	<b>fb:</b>	0.000Hz
<b>DP:</b>	0%	<b>Acceptability:</b>	no consider stroboscopic effects		
<b>IEEE Std 1789</b>					
<b>NM1:</b>	0.048	<b>NM2:</b>	0.114	<b>Module Depth:</b>	0.458%
<b>Risk level:</b>	No effect				
<b>CIE SVM</b>					
<b>SVM:</b>	0.014	<b>Visibility:</b>	Not Visible		

---

<b>Name:</b>	AURELED ET 19W 3100LM	<b>Type:</b>	LUMINAIRE
<b>SN:</b>	EL-AUR-3106-000	<b>Manufacturer:</b>	Eagle Lighting Australia
<b>Tester:</b>	Frank Magdic	<b>Sample time:</b>	2021-2-15 11:50:00
<b>Lamp base orientation:</b>	Horizontal	<b>Description:</b>	AURELED ET 19W 3100LM 940 DELTA 1200X300
<b>Remark:</b>		<b>Standard:</b>	IESNA 2000,CIE TN 006,etc

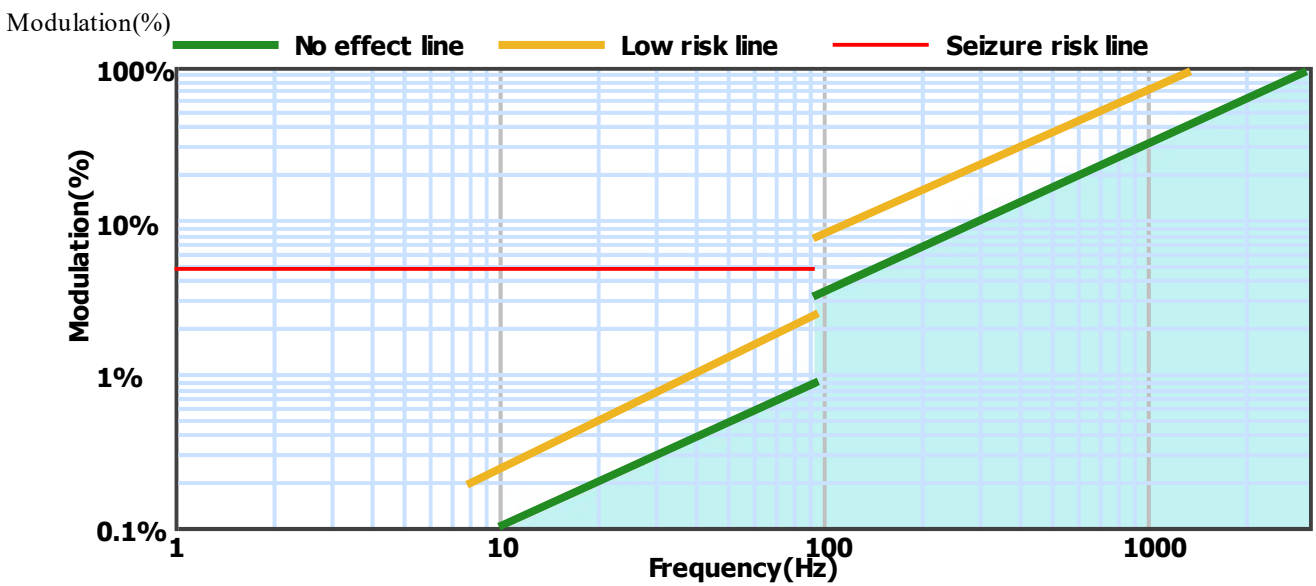
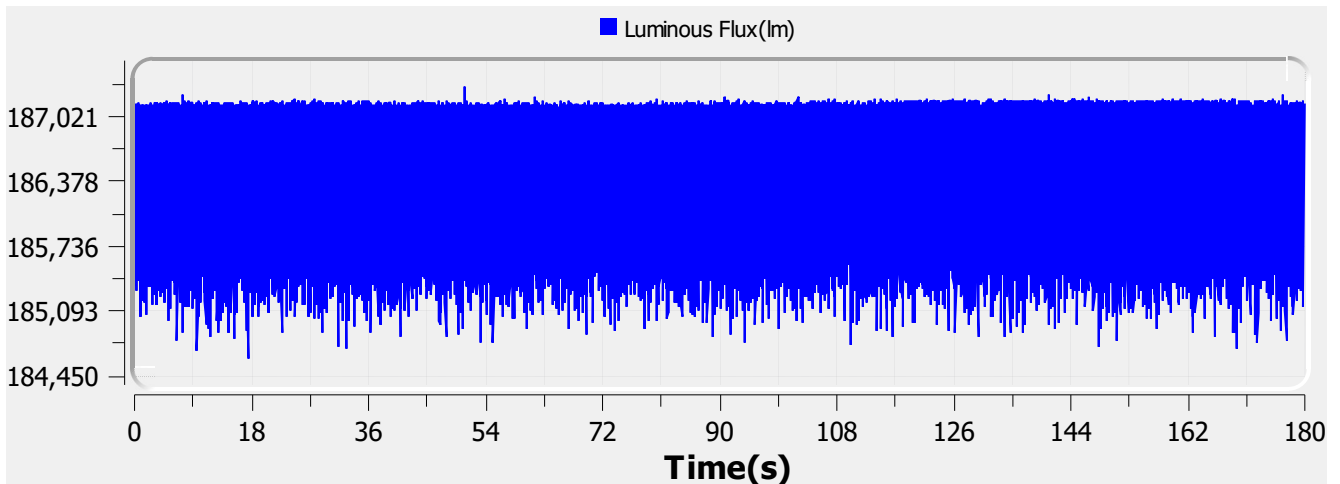
# Flicker Test Report

## Test condition

Photometric Type Luminous Flux(lm) Test range: Range2 Sampling Mode: Software  
 Samplerate: 20 kS/s Sampling Time: 180.00 s

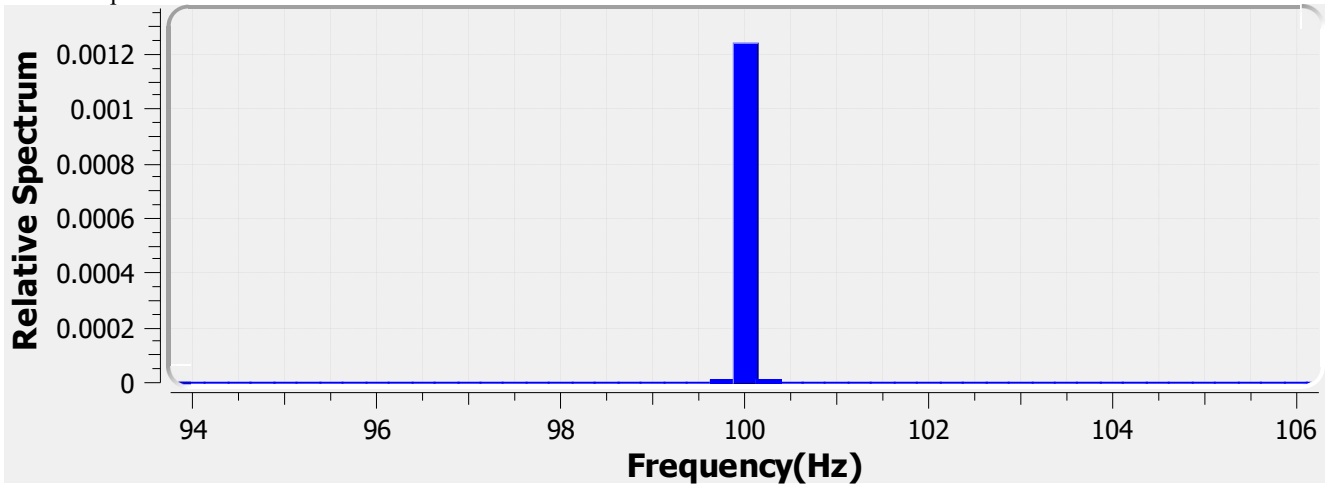
## Test Wave

Local Waveform(0.000-180.000s)



<b>Name:</b>	AURELED ET 24W 3900LM	<b>Type:</b>	LUMINAIRE
<b>SN:</b>	EL-AUR-3107-000	<b>Manufacturer:</b>	Eagle Lighting Australia
<b>Tester:</b>	Benjamin Cheng	<b>Sample time:</b>	2021-2-17 10:12:20
<b>Lamp base orientation:</b>	Horizontal	<b>Description:</b>	AURELED ET 24W 3900LM 940 DELTA 1200X300
<b>Remark:</b>		<b>Standard:</b>	IESNA 2000,CIE TN 006,etc

Relative Spectrum Waveform



### Test Result

<b>Avg(lm):</b>	186.412 k	<b>Max(lm):</b>	187.310 k	<b>Min(lm):</b>	184.632 k
<b>BASIC</b>					
<b>Frequency:</b>	100.000 Hz				
<b>IEC-Pst [10KS/s]</b>					
<b>Pst:</b>	0.012	<b>Result:</b>	very acceptable		
<b>CA CEC</b>					
<b>PAM:</b>	0.720%	<b>PAM(40Hz):</b>	0.016%	<b>PAM(90Hz):</b>	0.023%
<b>PAM(200Hz):</b>	0.389%	<b>PAM(400Hz):</b>	0.407%	<b>PAM(1000Hz):</b>	0.444%
<b>ASSIST</b>					
<b>Flicker Index:</b>	0.001	<b>Percent Flicker:</b>	0.423%	<b>d:</b>	0.000%
<b>a:</b>	0.000	<b>MP:</b>	0.0	<b>fb:</b>	0.000Hz
<b>DP:</b>	0%	<b>Acceptability:</b>	no consider stroboscopic effects		
<b>IEEE Std 1789</b>					
<b>NM1:</b>	0.046	<b>NM2:</b>	0.111	<b>Module Depth:</b>	0.423%
<b>Risk level:</b>	No effect				
<b>CIE SVM</b>					
<b>SVM:</b>	0.014	<b>Visibility:</b>	Not Visible		

---

<b>Name:</b>	AURELED ET 24W 3900LM	<b>Type:</b>	LUMINAIRE
<b>SN:</b>	EL-AUR-3107-000	<b>Manufacturer:</b>	Eagle Lighting Australia
<b>Tester:</b>	Benjamin Cheng	<b>Sample time:</b>	2021-2-17 10:12:20
<b>Lamp base orientation:</b>	Horizontal	<b>Description:</b>	AURELED ET 24W 3900LM 940 DELTA 1200X300
<b>Remark:</b>		<b>Standard:</b>	IESNA 2000,CIE TN 006,etc