

# Flicker Test Report

## Test condition

Photometric Type Luminous Flux(lm) Test range: Range2

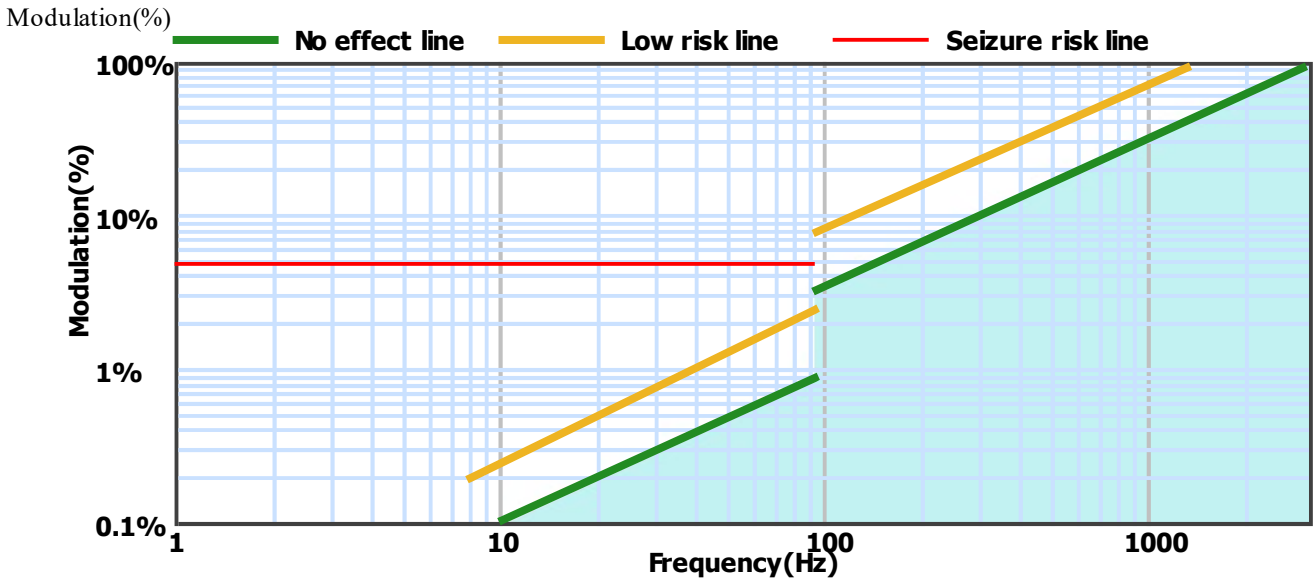
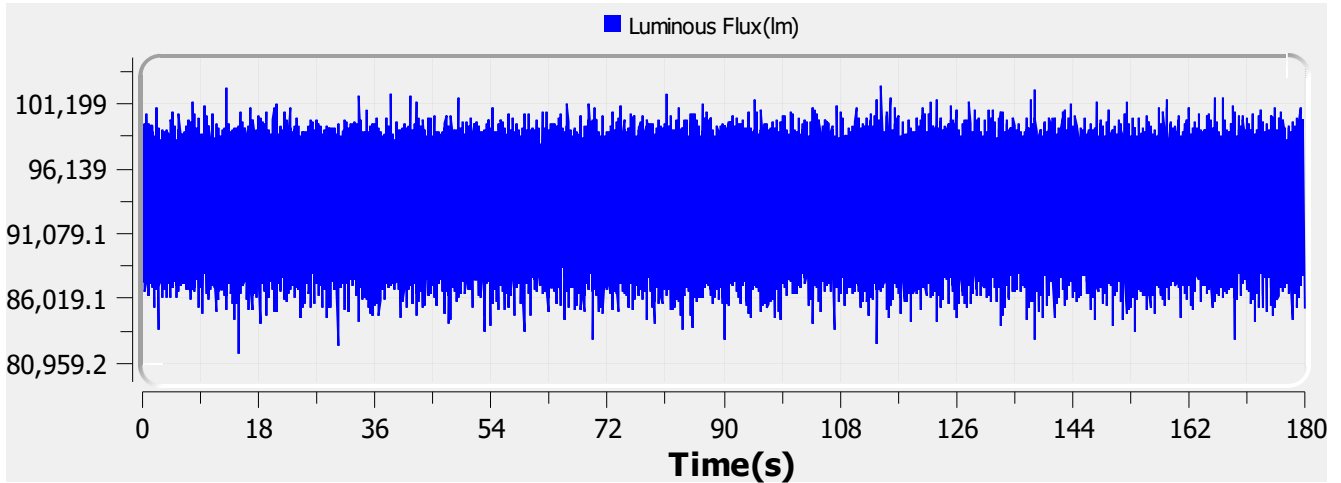
Sampling Mode: Software

Samplerate: 20 kS/s

Sampling Time: 180.00 s

## Test Wave

Local Waveform(0.000-180.000s)



Name: CIRCADIA LED ET 24W

Type: LUMINAIRE

SN: EL-CIR-1100-044

Manufacturer: Eagle Lighting

Tester: Frank Magdic

Sample time: 2020-3-18 15:39:30

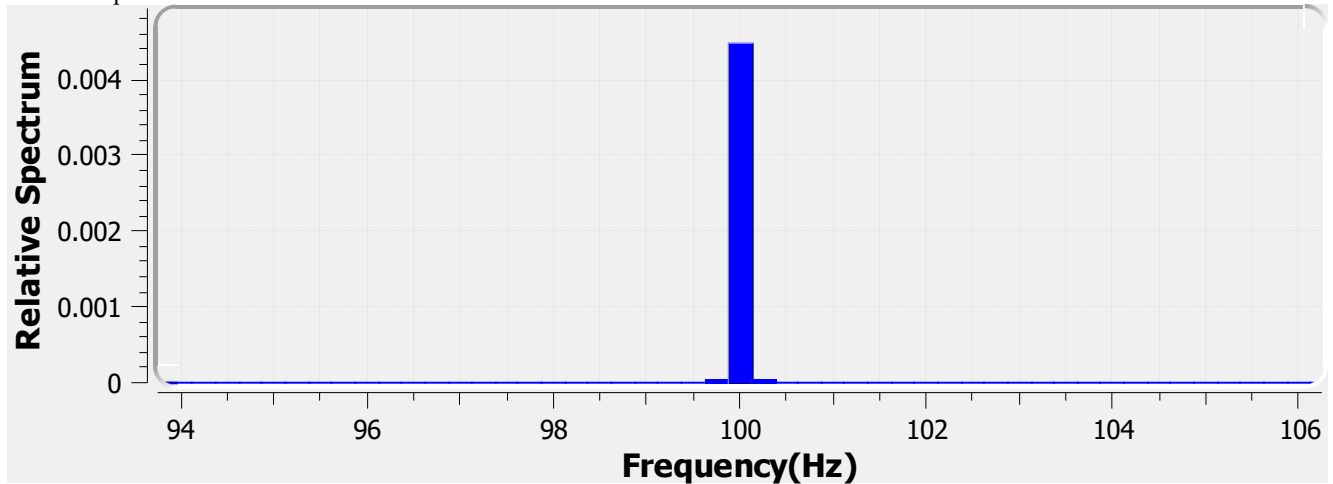
Lamp base orientation: Horizontal

Description:

Remark:

Standard: IESNA 2000,CIE TN 006,etc

Relative Spectrum Waveform



### Test Result

<b>Avg(lm):</b>	93.553 k	<b>Max(lm):</b>	102.728 k	<b>Min(lm):</b>	81.645 k
<b>BASIC</b>					
<b>Frequency:</b>	100.000 Hz				
<b>IEC-Pst [10KS/s]</b>					
<b>Pst:</b>	0.008	<b>Result:</b>	very acceptable		
<b>CA CEC</b>					
<b>PAM:</b>	11.436%	<b>PAM(40Hz):</b>	0.143%	<b>PAM(90Hz):</b>	0.239%
<b>PAM(200Hz):</b>	1.075%	<b>PAM(400Hz):</b>	1.251%	<b>PAM(1000Hz):</b>	1.593%
<b>ASSIST</b>					
<b>Flicker Index:</b>	0.005	<b>Percent Flicker:</b>	4.528%	<b>d:</b>	78.980%
<b>a:</b>	0.603	<b>MP:</b>	0.1	<b>fb:</b>	53.683Hz
<b>DP:</b>	1%	<b>Acceptability:</b>	somewhat acceptable		
<b>IEEE Std 1789</b>					
<b>NMI:</b>	0.098	<b>NM2:</b>	0.235	<b>Module Depth:</b>	4.528%
<b>Risk level:</b>	No effect				
<b>CIE SVM</b>					
<b>SVM:</b>	0.026	<b>Visibility:</b>	Not Visible		

---

<b>Name:</b>	CIRCADIA LED ET 24W	<b>Type:</b>	LUMINAIRE
<b>SN:</b>	EL-CIR-1100-044	<b>Manufacturer:</b>	Eagle Lighting
<b>Tester:</b>	Frank Magdic	<b>Sample time:</b>	2020-3-18 15:39:30
<b>Lamp base orientation:</b>	Horizontal	<b>Description:</b>	
<b>Remark:</b>		<b>Standard:</b>	IESNA 2000,CIE TN 006,etc