

# Flicker Test Report

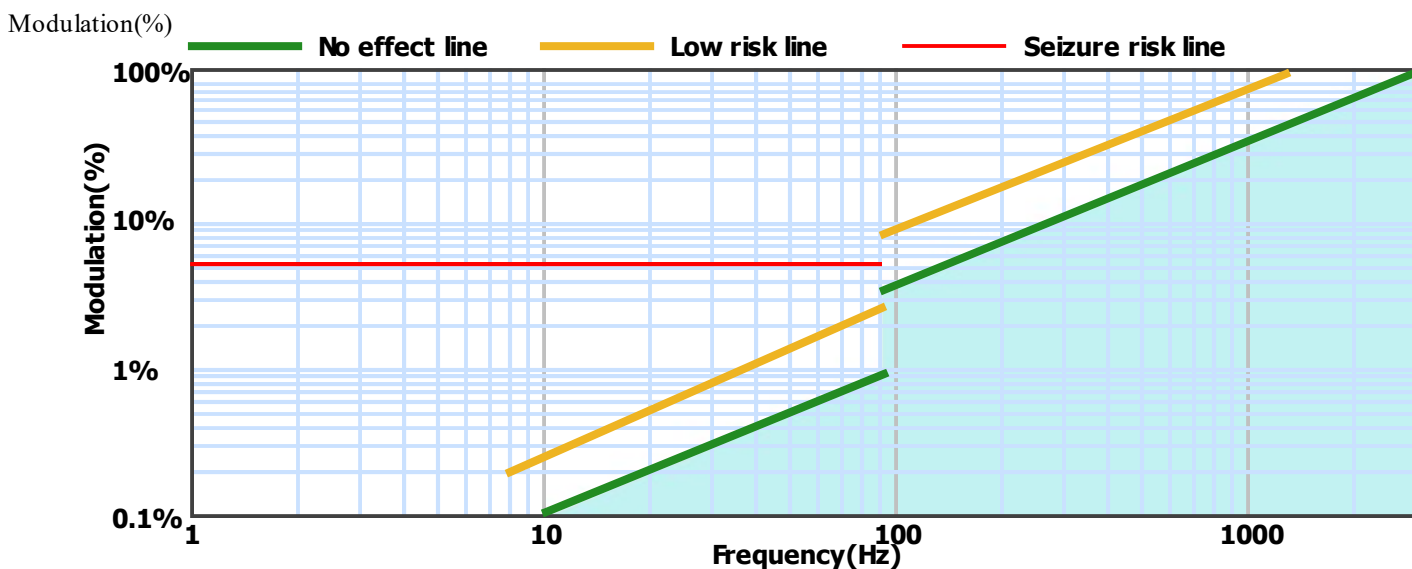
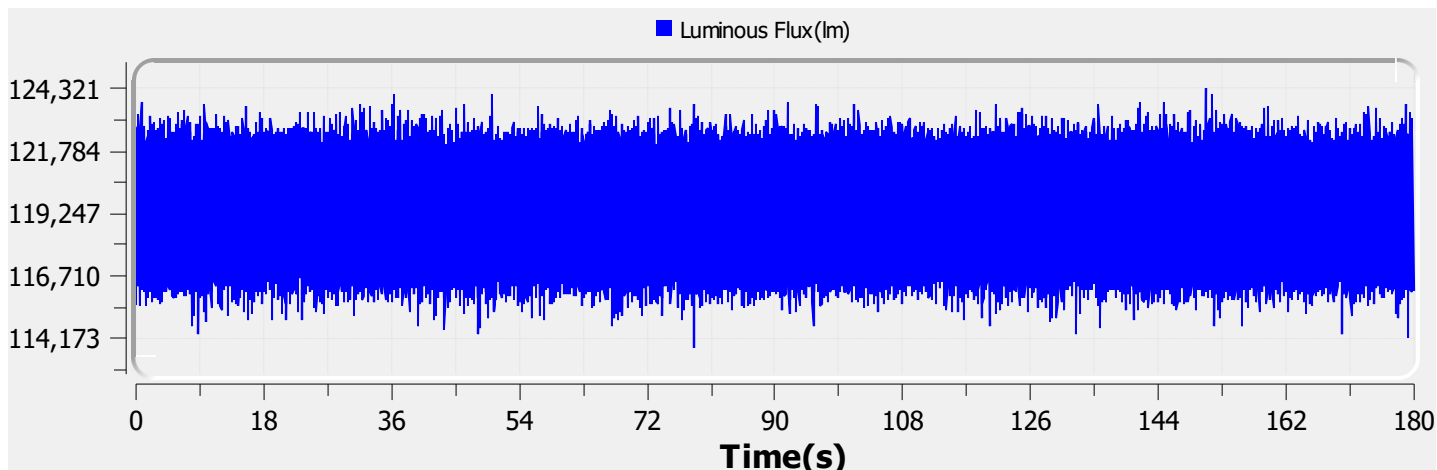
## Test condition

Photometric Type: Luminous Flux(lm)    Test range: Range2    Sampling Mode: Software

Samplerate: 20 kS/s    Sampling Time: 180.00 s

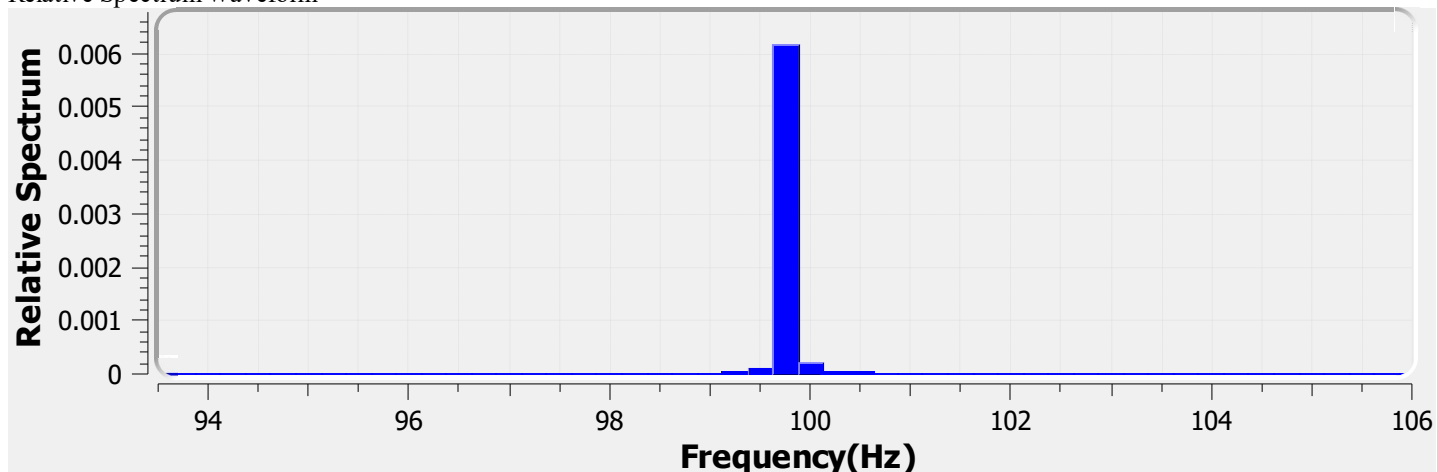
## Test Wave

Local Waveform(0.000-180.000s)



Name:	EL-ELLR-1001-244	Type:	EL-ELLR-1001-244
SN:	ELA-10932-F	Manufacturer:	Eagle Lighting
Tester:	Frank Magdic	Sample time:	2023-2-21 08:51:39
Lamp base orientation:	Horizontal	Description:	ELLE REC 24W 3750LM 940 OPAL 1170 SIN WHITE MANN
Remark:		Standard:	IESNA 2000,CIE TN 006,etc

Relative Spectrum Waveform



### Test Result

<b>Avg(lm):</b>	119.384 k	<b>Max(lm):</b>	124.350 k	<b>Min(lm):</b>	113.779 k
<b>BASIC</b>					
<b>Frequency:</b>	99.750 Hz				
<b>IEC-Pst [10KS/s]</b>					
<b>Pst:</b>	0.007	<b>Result:</b>	very acceptable		
<b>CA CEC</b>					
<b>PAM:</b>	4.440%	<b>PAM(40Hz):</b>	0.063%	<b>PAM(90Hz):</b>	0.101%
<b>PAM(200Hz):</b>	0.986%	<b>PAM(400Hz):</b>	1.093%	<b>PAM(1000Hz):</b>	1.255%
<b>ASSIST</b>					
<b>Flicker Index:</b>	0.003	<b>Percent Flicker:</b>	2.095%	<b>d:</b>	0.000%
<b>a:</b>	0.000	<b>MP:</b>	0.0	<b>fb:</b>	0.000Hz
<b>DP:</b>	0%	<b>Acceptability:</b>	no consider stroboscopic effects		
<b>IEEE Std 1789</b>					
<b>NMI:</b>	0.114	<b>NM2:</b>	0.273	<b>Module Depth:</b>	2.095%
<b>Risk level:</b>	No effect				
<b>CIE SVM</b>					
<b>SVM:</b>	0.032	<b>Visibility:</b>	Not Visible		

---

<b>Name:</b>	EL-ELLR-1001-244	<b>Type:</b>	EL-ELLR-1001-244
<b>SN:</b>	ELA-10932-F	<b>Manufacturer:</b>	Eagle Lighting
<b>Tester:</b>	Frank Magdic	<b>Sample time:</b>	2023-2-21 08:51:39
<b>Lamp base orientation:</b>	Horizontal	<b>Description:</b>	ELLE REC 24W 3750LM 940 OPAL 1170 SIN WHITE MANN
<b>Remark:</b>		<b>Standard:</b>	IESNA 2000,CIE TN 006,etc