

Flicker Test Report

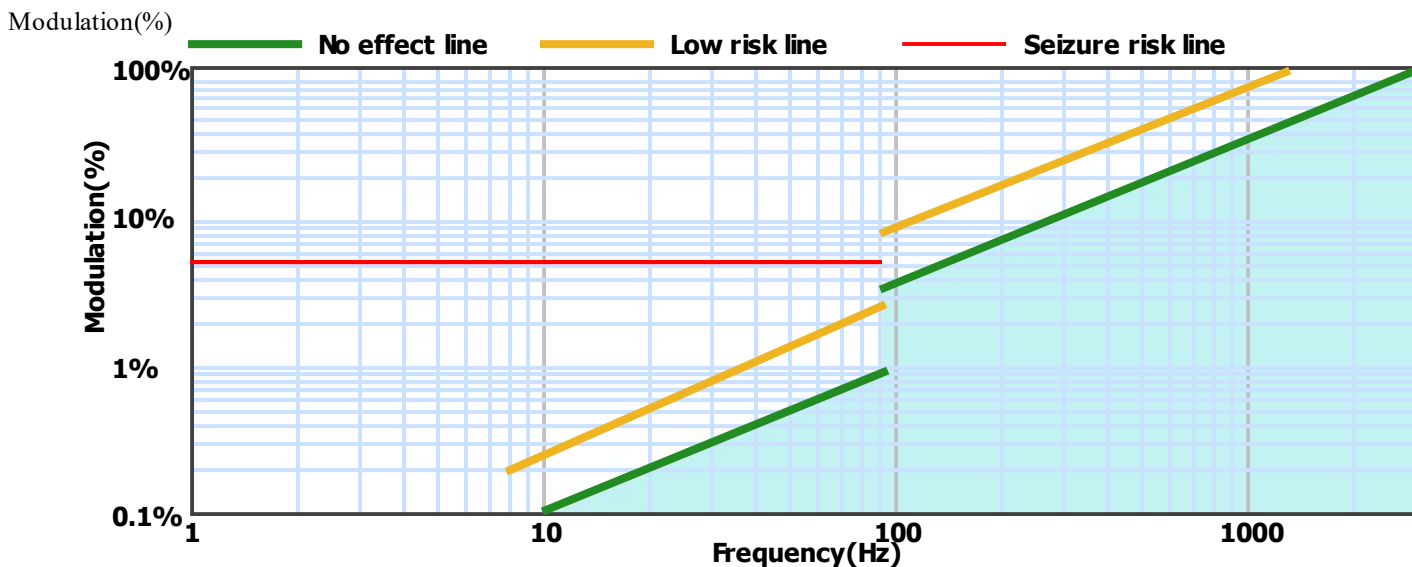
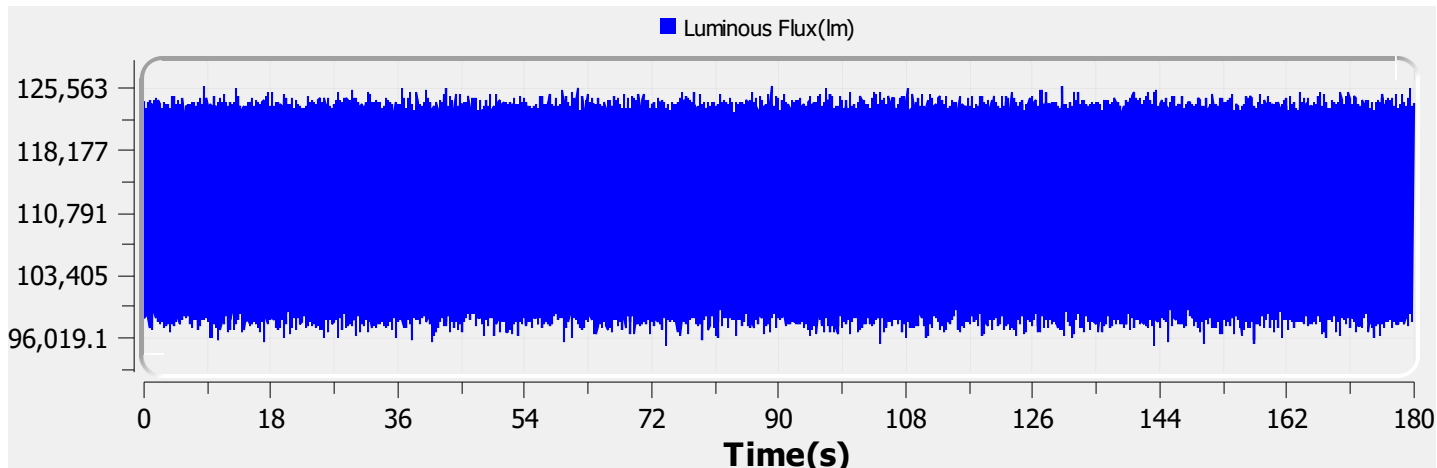
Test condition

Photometric Type: Luminous Flux(lm) Test range: Range2 Sampling Mode: Software

Samplerate: 20 kS/s Sampling Time: 180.00 s

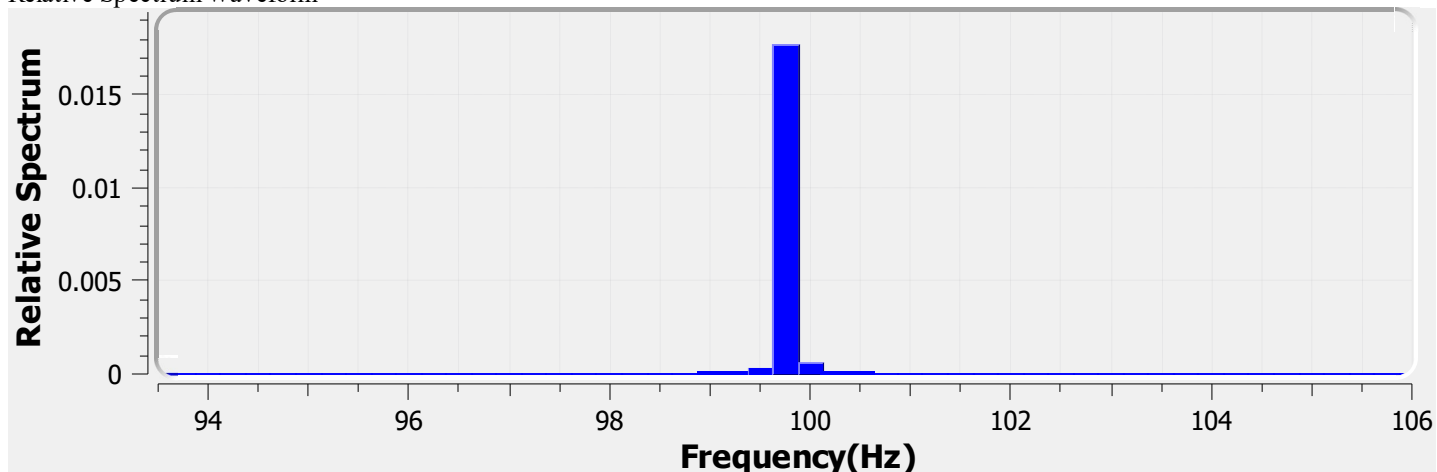
Test Wave

Local Waveform(0.000-180.000s)



Name:	EL-ELLR-1701-244	Type:	EL-ELLR-1701-244
SN:	ELA-10963-F	Manufacturer:	Eagle Lightng
Tester:	Frank Magdic	Sample time:	2023-5-30 12:15:15
Lamp base orientation:	Horizontal	Description:	ELLE REC ASYM 32W 4950LM 940 1170 SIN WHITE MANN
Remark:		Standard:	IESNA 2000,CIE TN 006,etc

Relative Spectrum Waveform



Test Result

Avg(lm):	112.133 k	Max(lm):	125.839 k	Min(lm):	95.064 k
BASIC					
Frequency:	99.750 Hz				
IEC-Pst [10KS/s]					
Pst:	0.012	Result:	very acceptable		
CA CEC					
PAM:	13.933%	PAM(40Hz):	0.341%	PAM(90Hz):	0.632%
PAM(200Hz):	2.044%	PAM(400Hz):	2.453%	PAM(1000Hz):	4.698%
ASSIST					
Flicker Index:	0.020	Percent Flicker:	9.933%	d:	0.000%
a:	0.000	MP:	0.2	fb:	0.000Hz
DP:	1%	Acceptability:	no consider stroboscopic effects		
IEEE Std 1789					
NMI:	0.211	NM2:	0.507	Module Depth:	9.933%
Risk level:	No effect				
CIE SVM					
SVM:	0.054	Visibility:	Not Visible		

Name:	EL-ELLR-1701-244	Type:	EL-ELLR-1701-244
SN:	ELA-10963-F	Manufacturer:	Eagle Lightng
Tester:	Frank Magdic	Sample time:	2023-5-30 12:15:15
Lamp base orientation:	Horizontal	Description:	ELLE REC ASYM 32W 4950LM 940 1170 SIN WHITE MANN
Remark:		Standard:	IESNA 2000,CIE TN 006,etc