

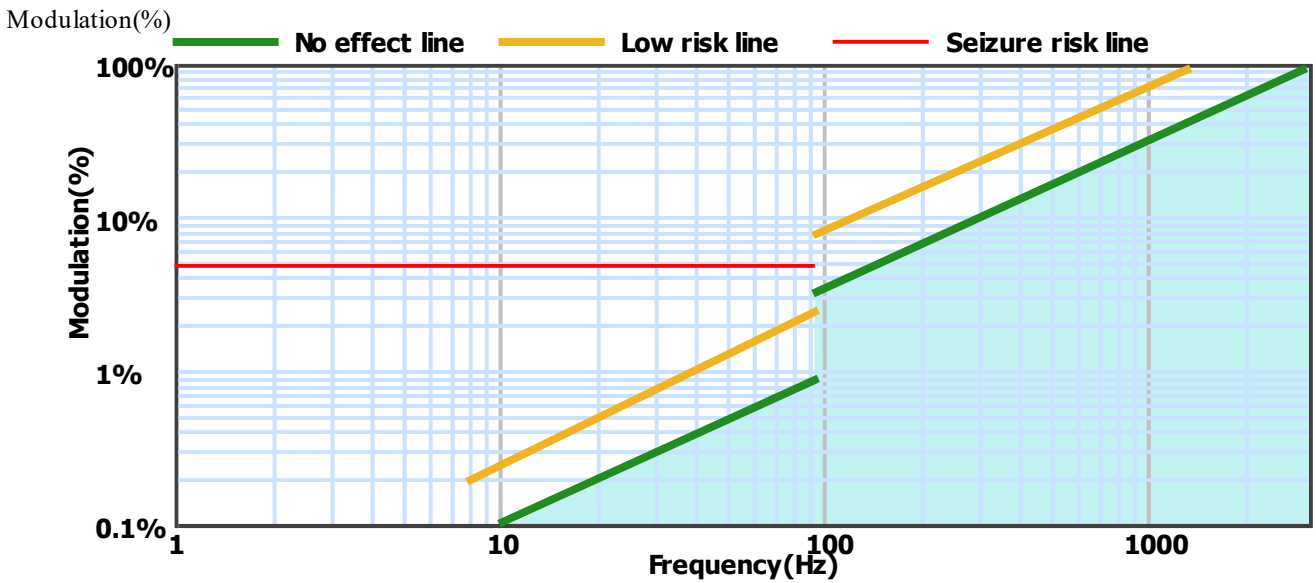
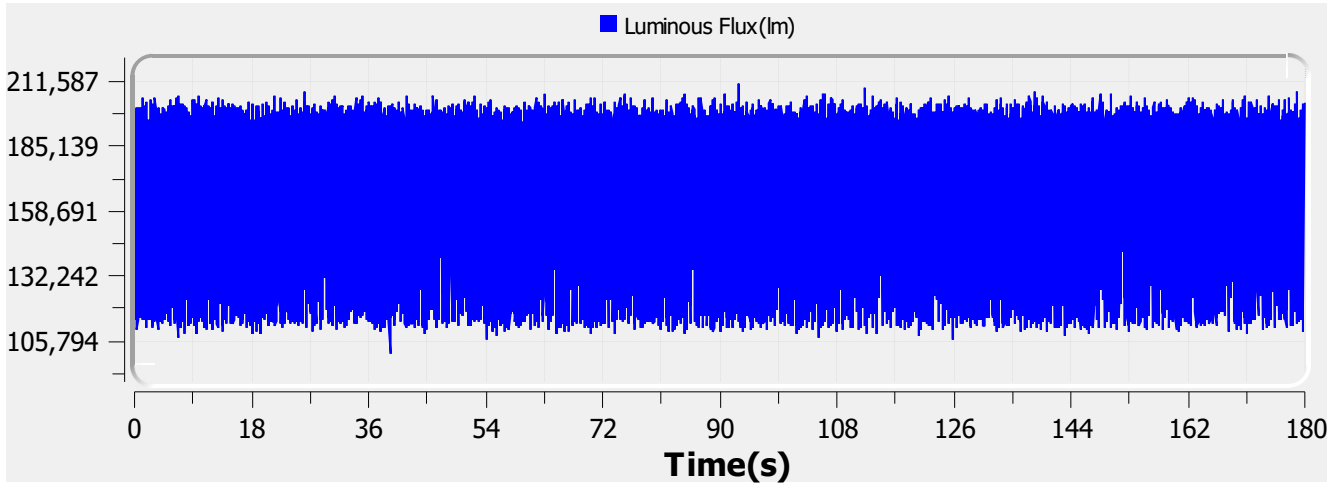
Flicker Test Report

Test condition

Photometric Type Luminous Flux(lm) Test range: Range2 Sampling Mode: Software
 Samplerate: 20 kS/s Sampling Time: 180.00 s

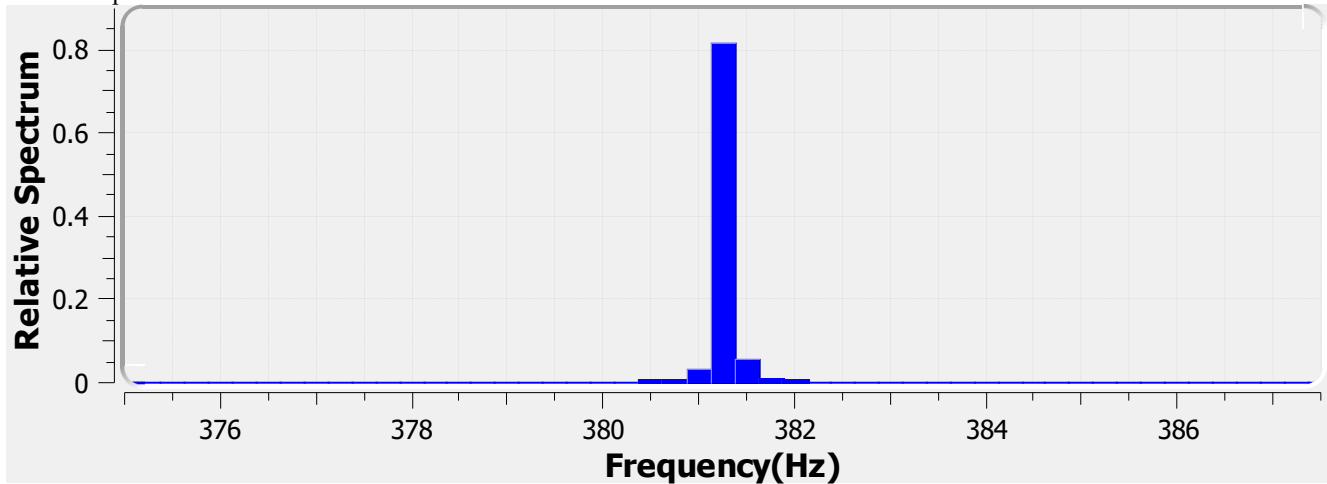
Test Wave

Local Waveform(0.000-180.000s)



Name:	Eagle Lighting Australia	Type:	EL-OMN-2109-000
SN:	ELA-10659-F	Manufacturer:	Eagle Lighting Australia
Tester:	LUMINAIRE	Sample time:	2021-5-28 08:12:35
Lamp base orientation:	Horizontal	Description:	OMNIPOD ET 24W 3400LM 940 1200x300
Remark:		Standard:	IESNA 2000,CIE TN 006,etc

Relative Spectrum Waveform



Test Result

Avg(lm):	169.130 k	Max(lm):	210.382 k	Min(lm):	100.180 k
BASIC					
Frequency:	381.250 Hz				
IEC-Pst [10KS/s]					
Pst:	0.073	Result:	very acceptable		
CA CEC					
PAM:	35.486%	PAM(40Hz):	0.522%	PAM(90Hz):	0.974%
PAM(200Hz):	2.139%	PAM(400Hz):	12.202%	PAM(1000Hz):	13.915%
ASSIST					
Flicker Index:	0.032	Percent Flicker:	14.889%	d:	69.992%
a:	1.049	MP:	0.3	fb:	118.970Hz
DP:	1%	Acceptability:	very acceptable		
IEEE Std 1789					
NMI:	0.333	NM2:	0.798	Module Depth:	14.889%
Risk level:	No effect				
CIE SVM					
SVM:	0.163	Visibility:	Not Visible		

Name:	Eagle Lighting Australia	Type:	EL-OMN-2109-000
SN:	ELA-10659-F	Manufacturer:	Eagle Lighting Australia
Tester:	LUMINAIRE	Sample time:	2021-5-28 08:12:35
Lamp base orientation:	Horizontal	Description:	OMNIPOD ET 24W 3400LM 940 1200x300
Remark:		Standard:	IESNA 2000,CIE TN 006,etc