

Flicker Test Report

Test condition

Photometric Type Luminous Flux(lm) Test range: Range2

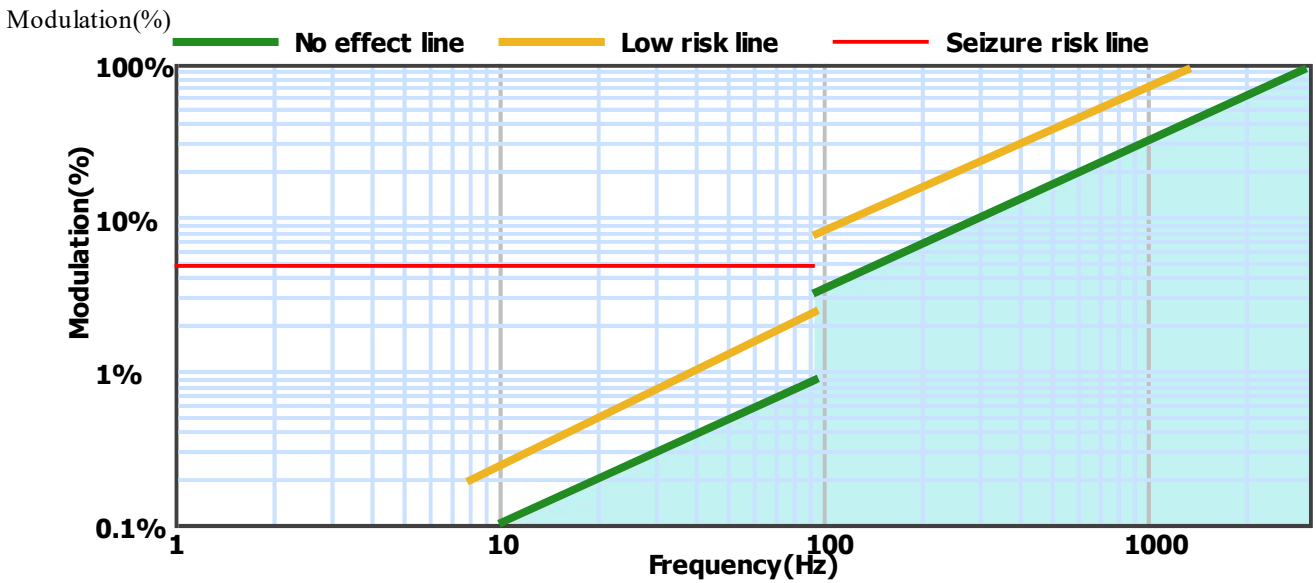
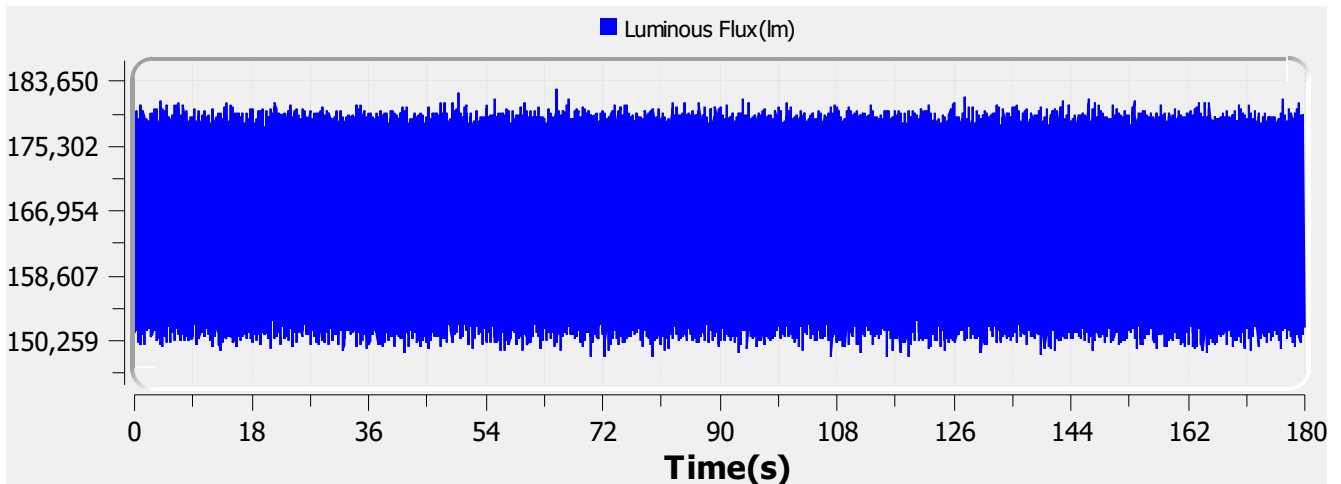
Sampling Mode: Software

Samplerate: 20 kS/s

Sampling Time: 180.00 s

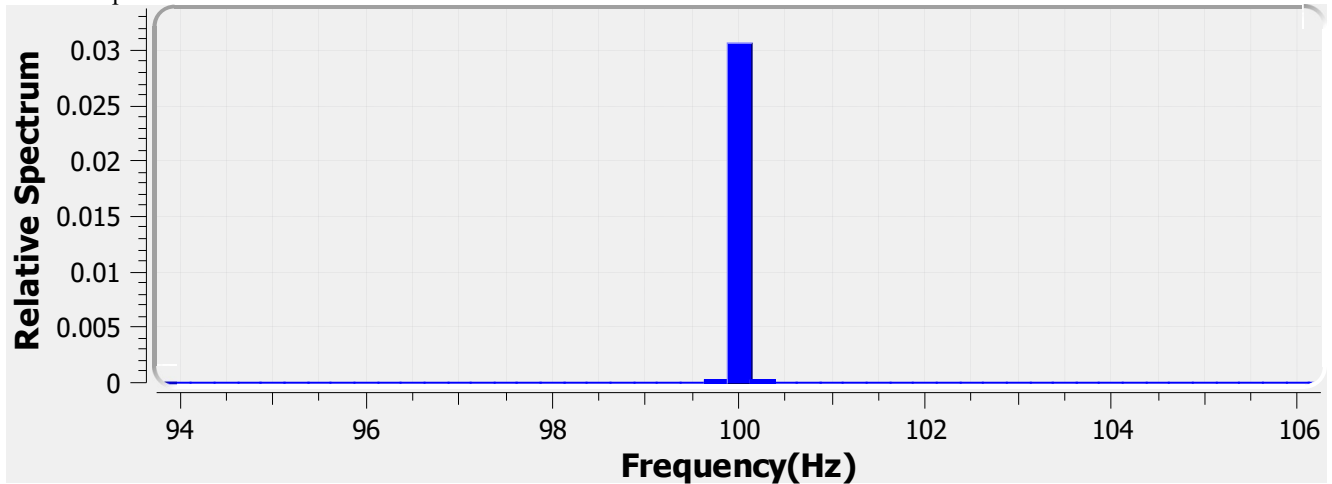
Test Wave

Local Waveform(0.000-180.000s)



Name:	Eagle Lighting Australia	Type:	EL-OMN6-2100-000
SN:	ELA-10675-F	Manufacturer:	Eagle Lighting Australia
Tester:	Frank Magdic	Sample time:	2021-6-7 13:53:08
Lamp base orientation:	Horizontal	Description:	OMNIPOD ET 21W 2R 3100LM 940 600x600
Remark:		Standard:	IESNA 2000,CIE TN 006,etc

Relative Spectrum Waveform



Test Result

Avg(lm):	165.355 k	Max(lm):	182.874 k	Min(lm):	148.091 k
BASIC					
Frequency:	100.000 Hz				
IEC-Pst [10KS/s]					
Pst:	0.009	Result:	very acceptable		
CA CEC					
PAM:	10.510%	PAM(40Hz):	0.146%	PAM(90Hz):	0.246%
PAM(200Hz):	2.123%	PAM(400Hz):	2.437%	PAM(1000Hz):	3.068%
ASSIST					
Flicker Index:	0.011	Percent Flicker:	6.904%	d:	79.171%
a:	0.585	MP:	0.1	fb:	54.718Hz
DP:	1%	Acceptability:	somewhat acceptable		
IEEE Std 1789					
NMI:	0.253	NM2:	0.607	Module Depth:	6.904%
Risk level:	No effect				
CIE SVM					
SVM:	0.069	Visibility:	Not Visible		

Name:	Eagle Lighting Australia	Type:	EL-OMN6-2100-000
SN:	ELA-10675-F	Manufacturer:	Eagle Lighting Australia
Tester:	Frank Magdic	Sample time:	2021-6-7 13:53:08
Lamp base orientation:	Horizontal	Description:	OMNIPOD ET 21W 2R 3100LM 940 600x600
Remark:		Standard:	IESNA 2000,CIE TN 006,etc

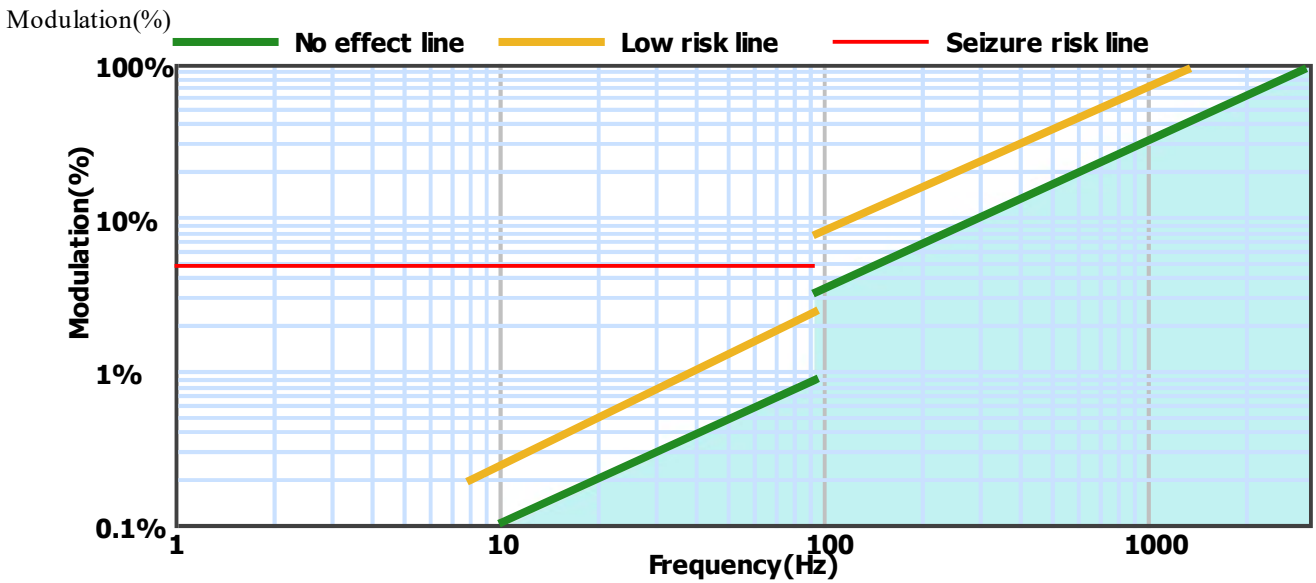
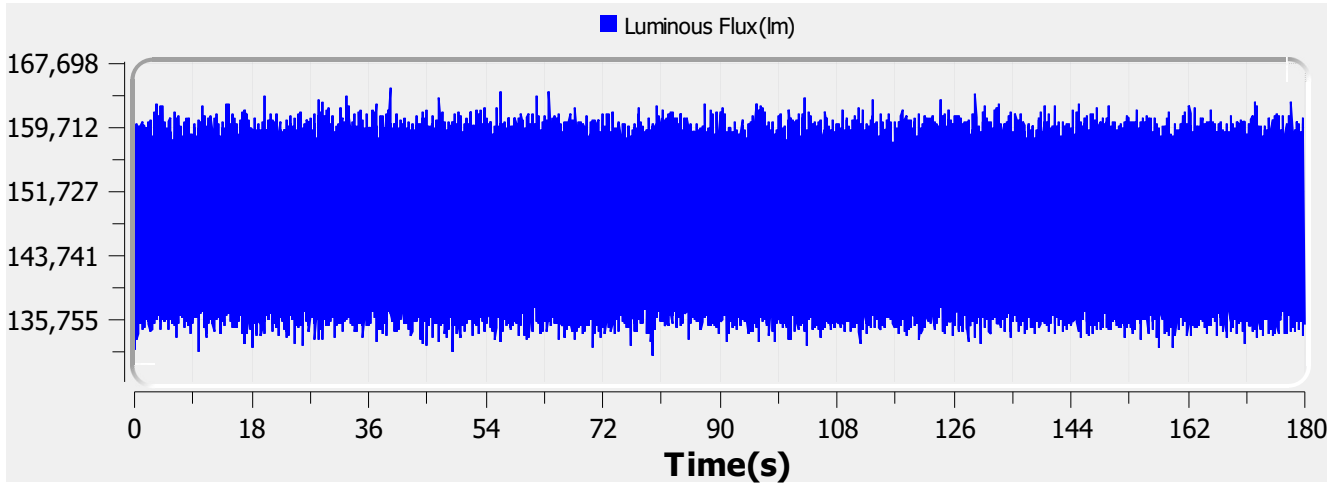
Flicker Test Report

Test condition

Photometric Type Luminous Flux(lm) Test range: Range2 Sampling Mode: Software
 Samplerate: 20 kS/s Sampling Time: 180.00 s

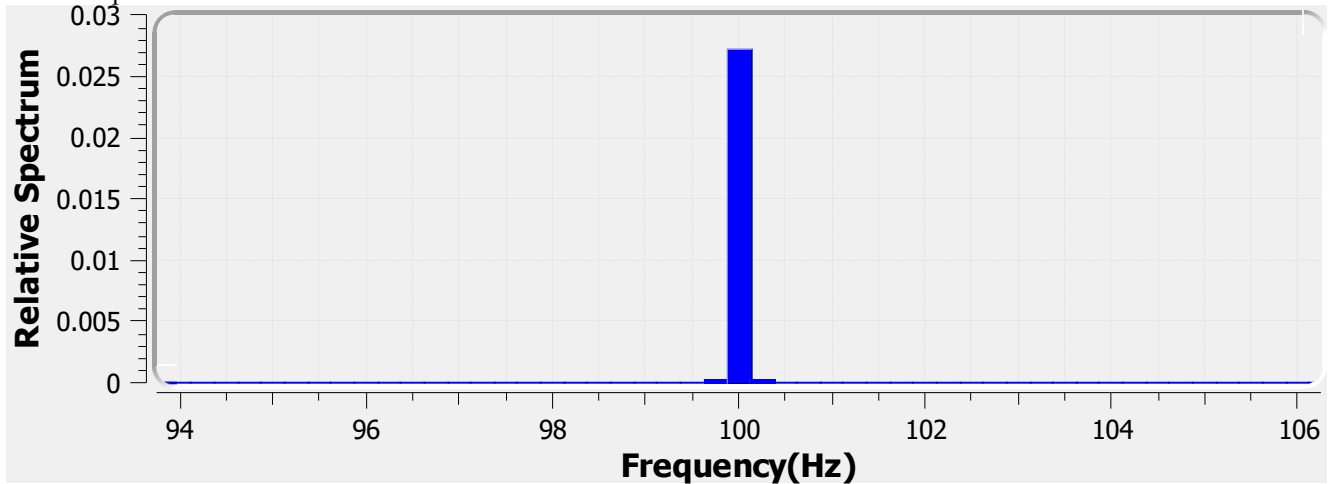
Test Wave

Local Waveform(0.000-180.000s)



Name:	Eagle Lighting Australia	Type:	EL-OMN6-2100-244
SN:	ELA-10684-F	Manufacturer:	Eagle Lighting Australia
Tester:	Frank Magdic	Sample time:	2021-6-10 07:53:42
Lamp base orientation:	Horizontal	Description:	OMNIPOD ET 19W 2R 2750LM 940 600x600 DALI CLO
Remark:		Standard:	IESNA 2000,CIE TN 006,etc

Relative Spectrum Waveform



Test Result

Avg(lm):	147.955 k	Max(lm):	164.608 k	Min(lm):	131.335 k
BASIC					
Frequency:	100.000 Hz				
IEC-Pst [10KS/s]					
Pst:	0.009	Result:	very acceptable		
CA CEC					
PAM:	11.244%	PAM(40Hz):	0.141%	PAM(90Hz):	0.235%
PAM(200Hz):	1.972%	PAM(400Hz):	2.268%	PAM(1000Hz):	3.323%
ASSIST					
Flicker Index:	0.010	Percent Flicker:	6.632%	d:	79.976%
a:	0.514	MP:	0.1	fb:	59.083Hz
DP:	1%	Acceptability:	somewhat acceptable		
IEEE Std 1789					
NMI:	0.250	NM2:	0.599	Module Depth:	6.632%
Risk level:	No effect				
CIE SVM					
SVM:	0.066	Visibility:	Not Visible		

Name:	Eagle Lighting Australia	Type:	EL-OMN6-2100-244
SN:	ELA-10684-F	Manufacturer:	Eagle Lighting Australia
Tester:	Frank Magdic	Sample time:	2021-6-10 07:53:42
Lamp base orientation:	Horizontal	Description:	OMNIPOD ET 19W 2R 2750LM 940 600x600 DALI CLO
Remark:		Standard:	IESNA 2000,CIE TN 006,etc