

Flicker Test Report

Test condition

Photometric Type Luminous Flux(lm) Test range: Range2

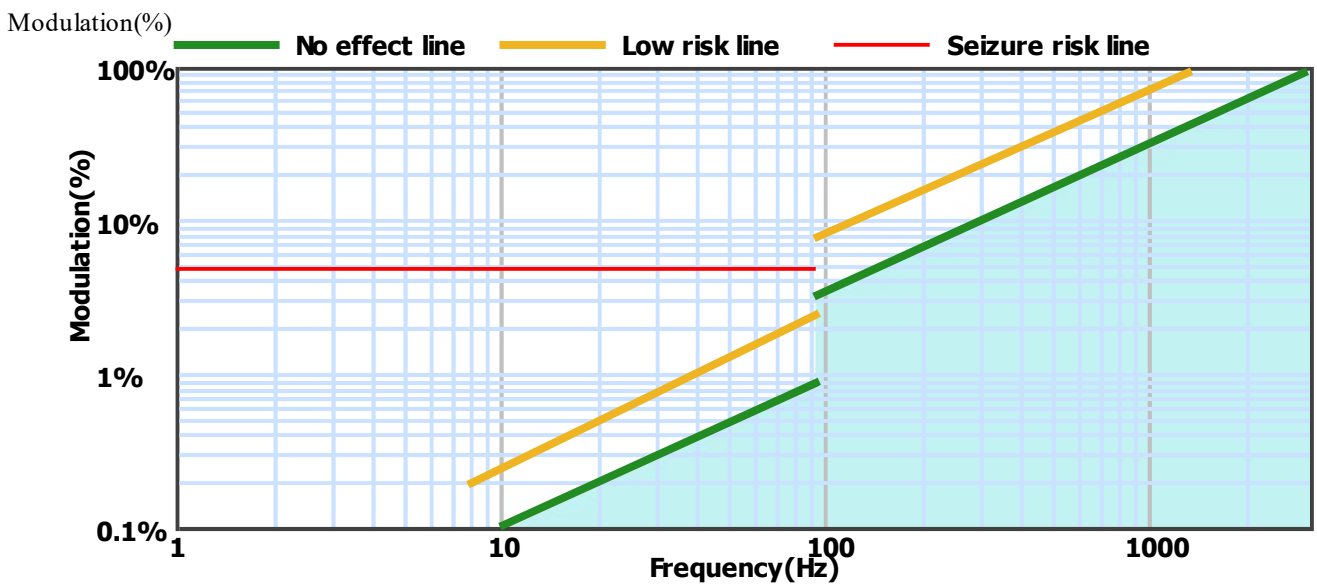
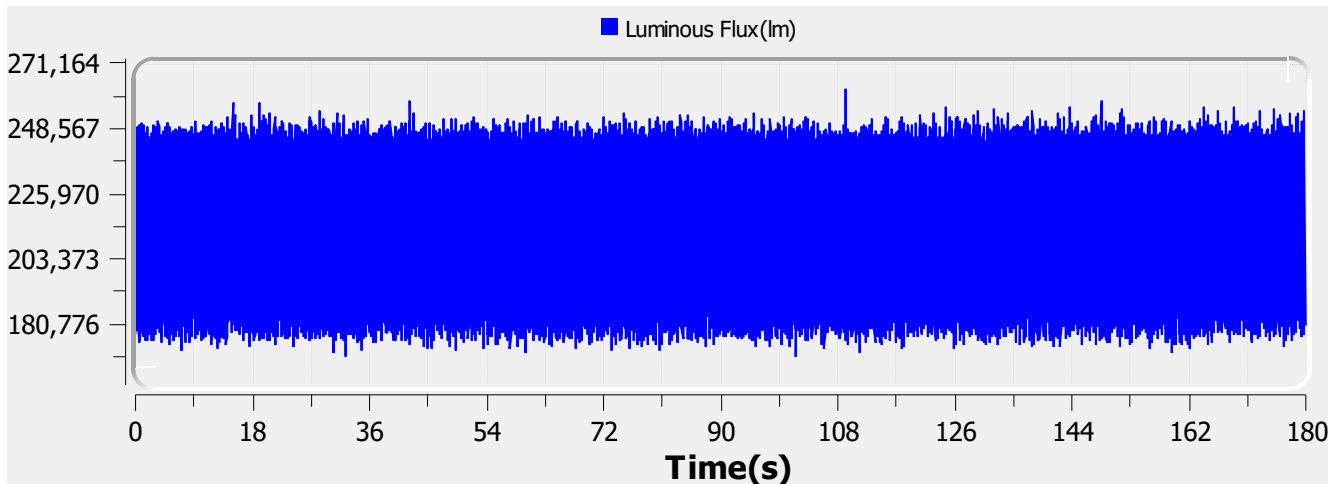
Sampling Mode: Software

Samplerate: 20 kS/s

Sampling Time: 180.00 s

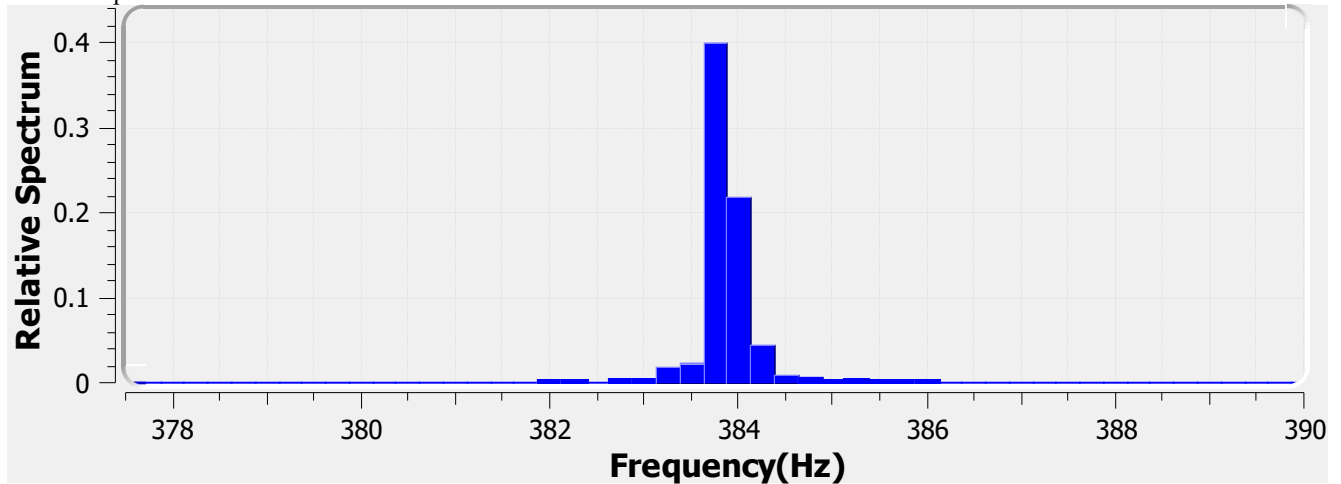
Test Wave

Local Waveform(0.000-180.000s)



Name:	Eagle Lighting Australia	Type:	EL-OMN6-2103-000
SN:	ELA-10678-F-A	Manufacturer:	Eagle Lighting Australia
Tester:	Frank Magdic	Sample time:	2021-6-3 09:50:27
Lamp base orientation:	Horizontal	Description:	OMNIPOD ET 33W 2R 4750LM 940 600x600 WHT-BLK PC
Remark:		Standard:	IESNA 2000,CIE TN 006,etc

Relative Spectrum Waveform



Test Result

Avg(lm):	215.136 k	Max(lm):	263.349 k	Min(lm):	169.195 k
BASIC					
Frequency:	383.750 Hz				
IEC-Pst [10KS/s]					
Pst:	0.070	Result:	very acceptable		
CA CEC					
PAM:	21.768%	PAM(40Hz):	0.263%	PAM(90Hz):	0.447%
PAM(200Hz):	1.118%	PAM(400Hz):	10.005%	PAM(1000Hz):	10.443%
ASSIST					
Flicker Index:	0.027	Percent Flicker:	12.114%	d:	60.726%
a:	1.236	MP:	0.1	fb:	90.606Hz
DP:	1%	Acceptability:	very acceptable		
IEEE Std 1789					
NMI:	0.316	NM2:	0.759	Module Depth:	12.114%
Risk level:	No effect				
CIE SVM					
SVM:	0.142	Visibility:	Not Visible		

Name:	Eagle Lighting Australia	Type:	EL-OMN6-2103-000
SN:	ELA-10678-F-A	Manufacturer:	Eagle Lighting Australia
Tester:	Frank Magdic	Sample time:	2021-6-3 09:50:27
Lamp base orientation:	Horizontal	Description:	OMNIPOD ET 33W 2R 4750LM 940 600x600 WHT-BLK PC
Remark:		Standard:	IESNA 2000,CIE TN 006,etc

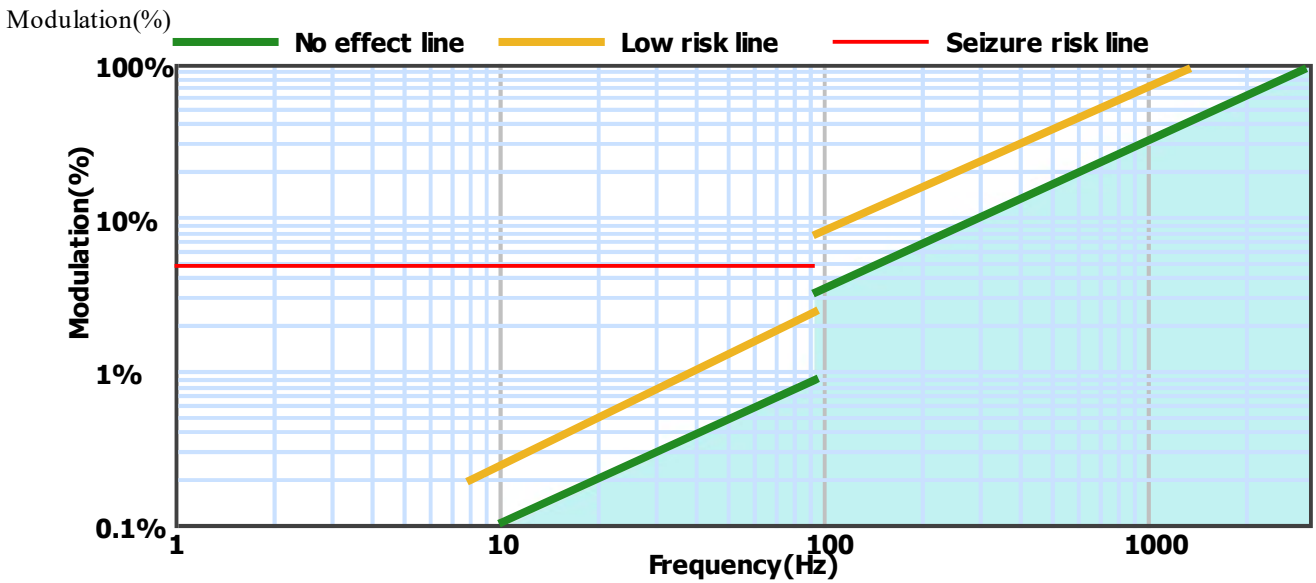
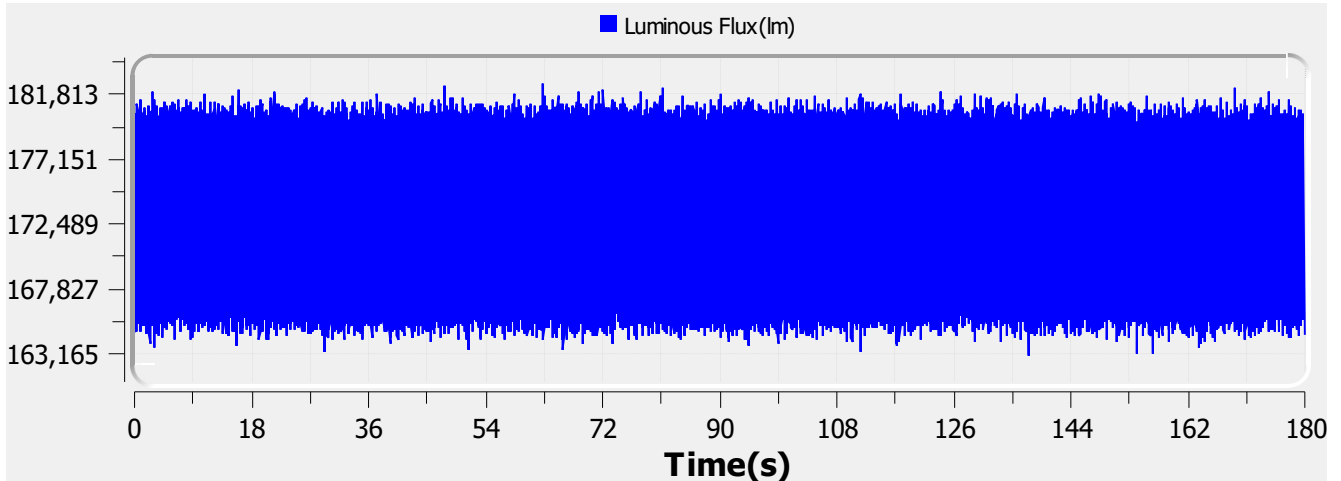
Flicker Test Report

Test condition

Photometric Type Luminous Flux(lm) Test range: Range2 Sampling Mode: Software
 Samplerate: 20 kS/s Sampling Time: 180.00 s

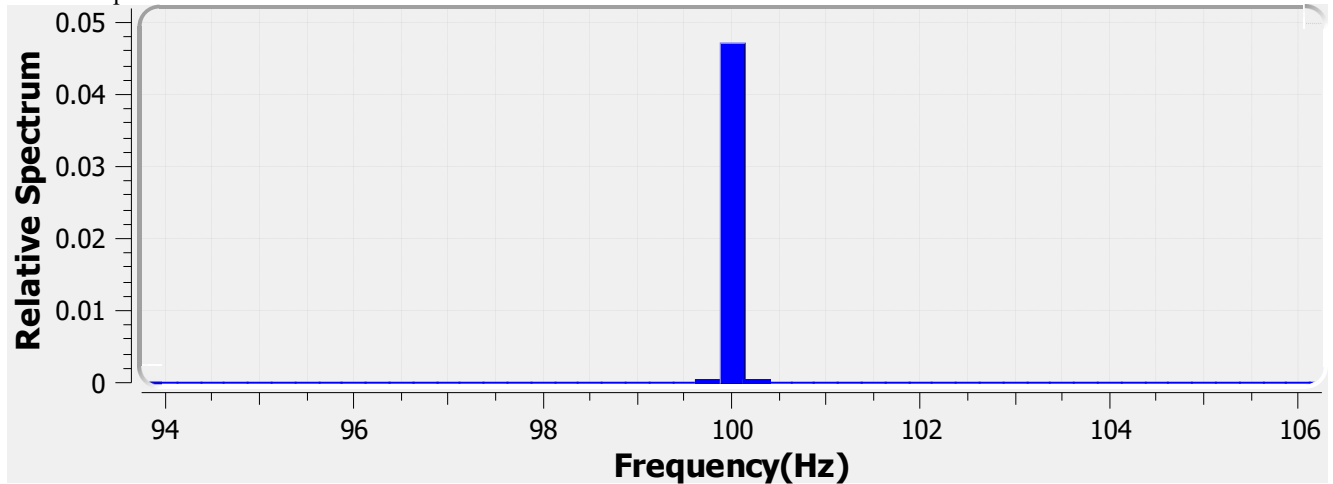
Test Wave

Local Waveform(0.000-180.000s)



Name:	Eagle Lighting Australia	Type:	EL-OMN6-2103-000
SN:	ELA-10681-F	Manufacturer:	Eagle Lighting Australia
Tester:	Frank Magdic	Sample time:	2021-6-8 15:46:58
Lamp base orientation:	Horizontal	Description:	OMNIPOD ET 29W 2R 4200LM 940 600x600 WHT-BLK PC
Remark:		Standard:	IESNA 2000,CIE TN 006,etc

Relative Spectrum Waveform



Test Result

Avg(lm):	172.943 k	Max(lm):	182.514 k	Min(lm):	163.089 k
IEC-Pst [10KS/s]					
Pst:	0.015	Result:	very acceptable		
CA CEC					
PAM:	5.621%	PAM(40Hz):	0.055%	PAM(90Hz):	0.105%
PAM(200Hz):	2.408%	PAM(400Hz):	2.670%	PAM(1000Hz):	3.119%
ASSIST					
Flicker Index:	0.007	Percent Flicker:	3.818%	d:	73.160%
a:	1.301	MP:	0.0	fb:	21.188Hz
DP:	0%	Acceptability:	very acceptable		
IEEE Std 1789					
NM1:	0.308	NM2:	0.739	Module Depth:	3.818%
Risk level:	No effect				
CIESVM					
SVM:	0.085	Visibility:	Not Visible		

Name:	Eagle Lighting Australia	Type:	EL-OMN6-2103-000
SN:	ELA-10681-F	Manufacturer:	Eagle Lighting Australia
Tester:	Frank Magdic	Sample time:	2021-6-8 15:46:58
Lamp base orientation:	Horizontal	Description:	OMNIPOD ET 29W 2R 4200LM 940 600x600 WHT-BLK PC
Remark:		Standard:	IESNA 2000,CIE TN 006,etc