

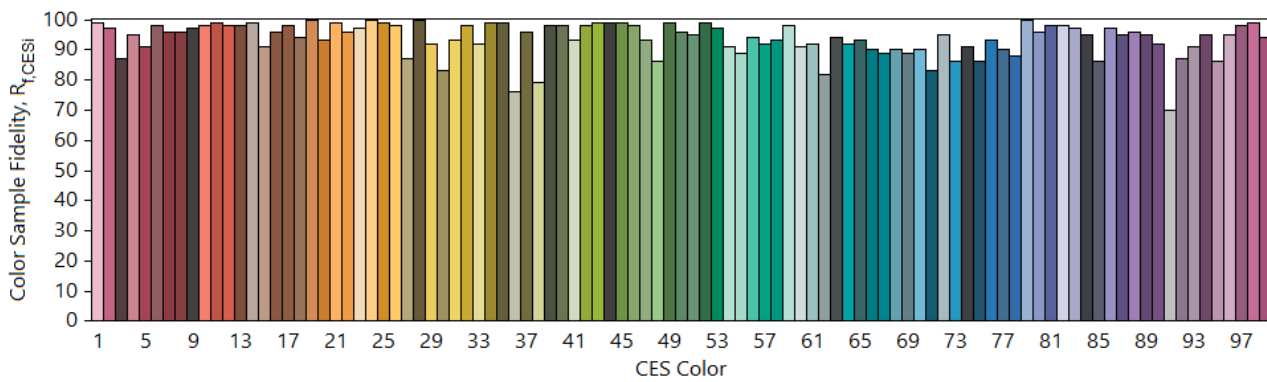
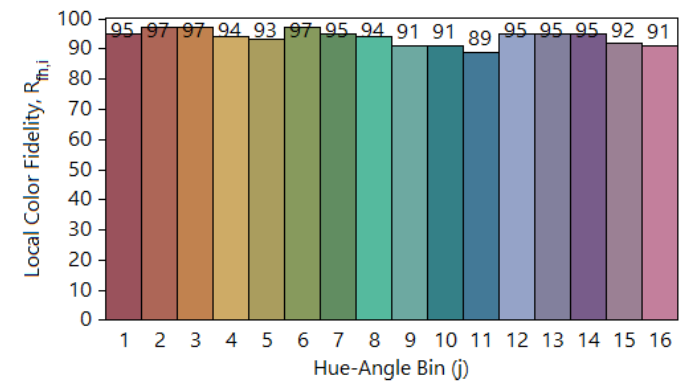
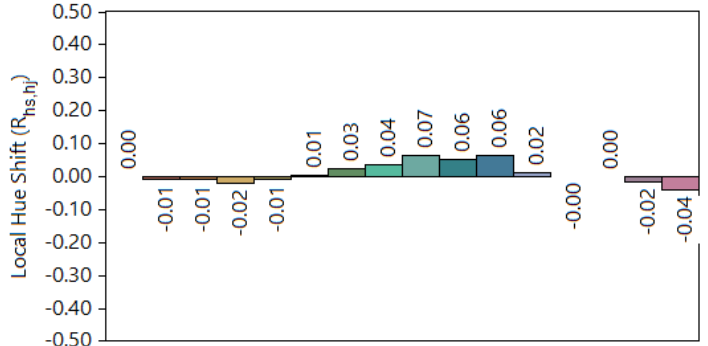
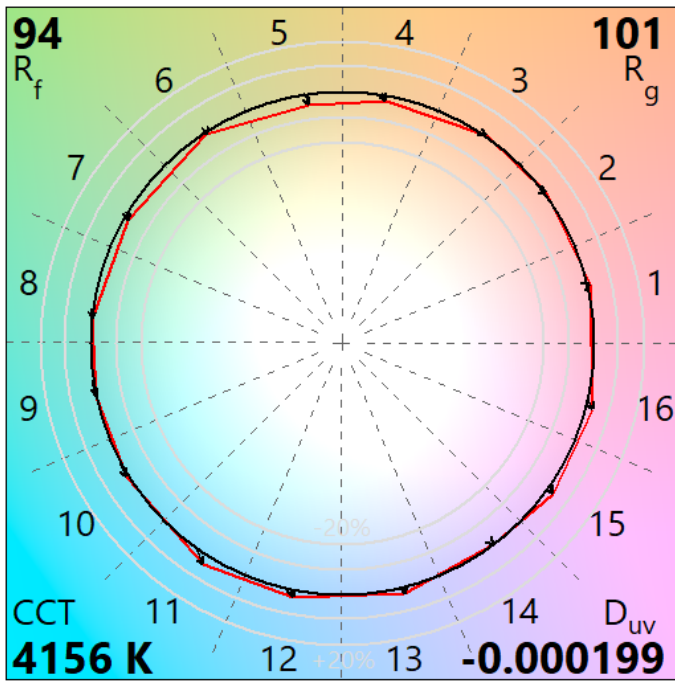
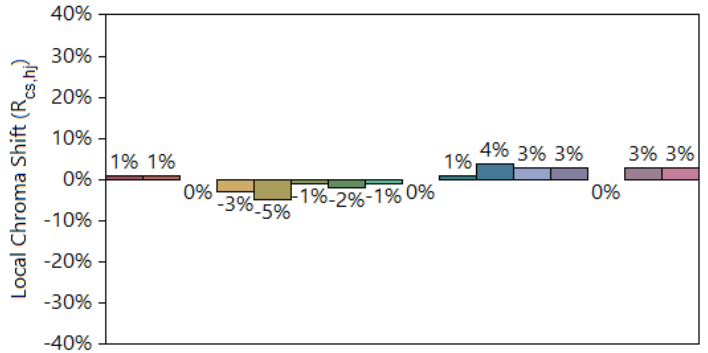
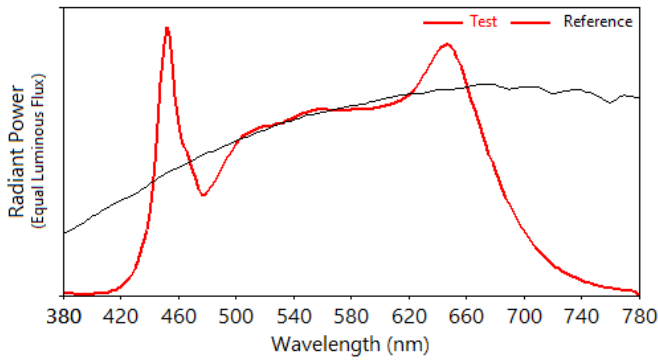
# IES TM-30-18 Color Rendition Report

**Source:** ELA-10781-S.b

**Manufacturer:** ELA

**Date:** Tuesday May 03 19:31:05 2022

**Model:** EL-OPSL-12xx-xxx (Ra 95+)



**Notes:** OPSL CRI95+ versions.

**x** 0.373698  
**y** 0.372017  
**u'** 0.222545  
**v'** 0.498474

**CIE 13.3-1995**  
**(CRI)**  
**R<sub>a</sub> 98**  
**R<sub>g</sub> 86**

Colors are for visual orientation purposes only.