

Flicker Test Report

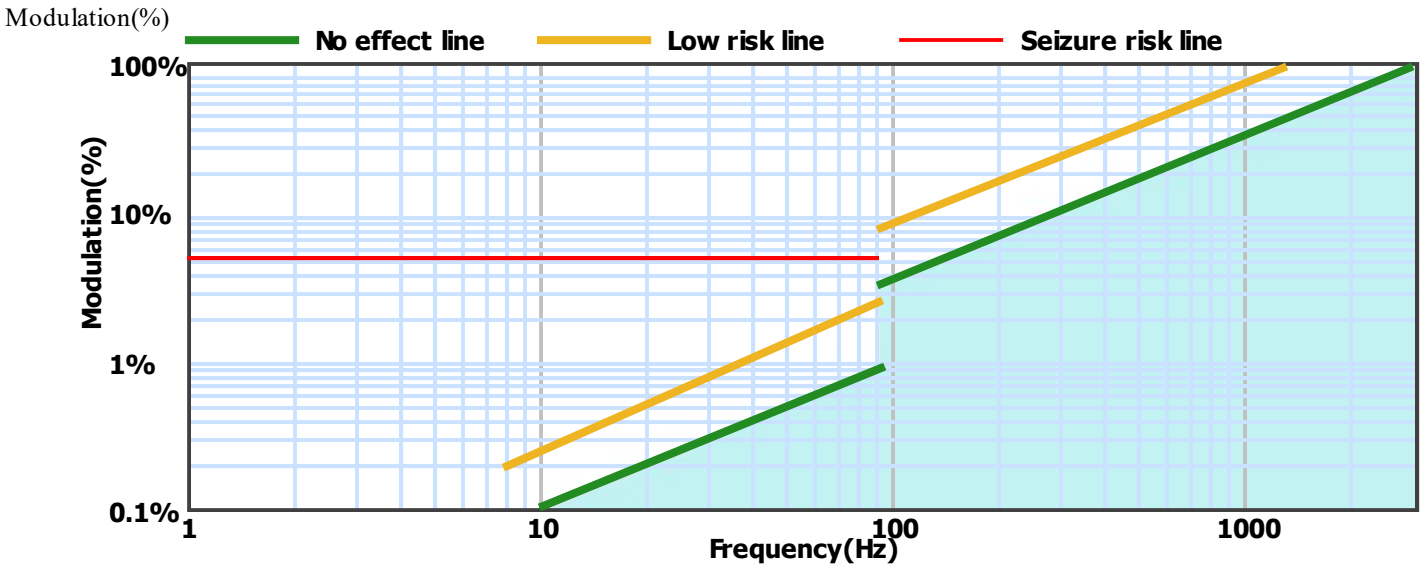
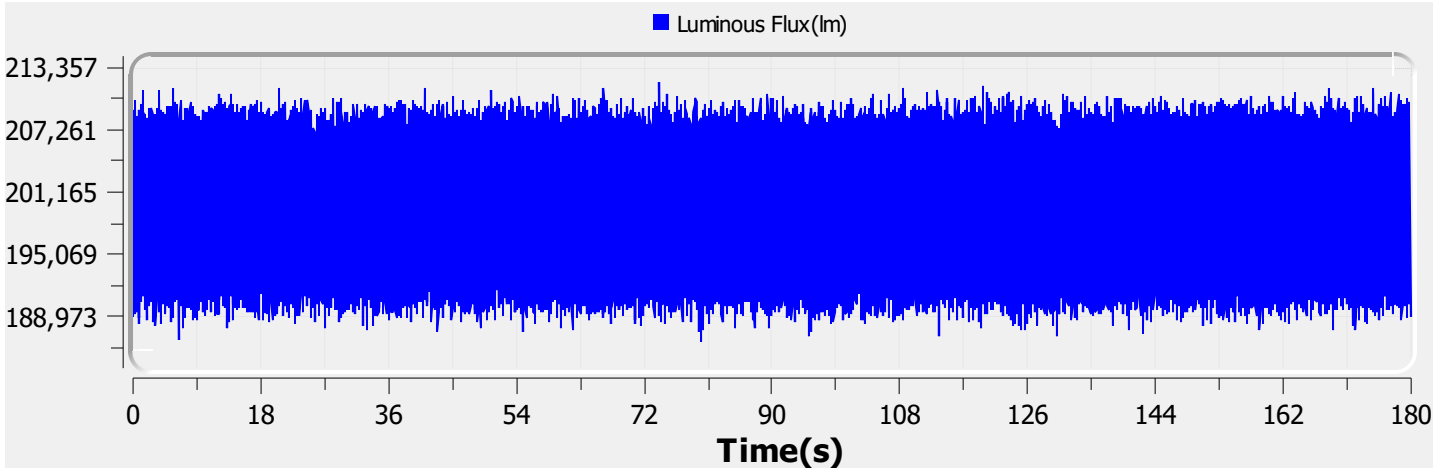
Test condition

Photometric Type: Luminous Flux(lm) **Test range:** Range2 **Sampling Mode:** Software

Samplerate: 20 kS/s **Sampling Time:** 180.00 s

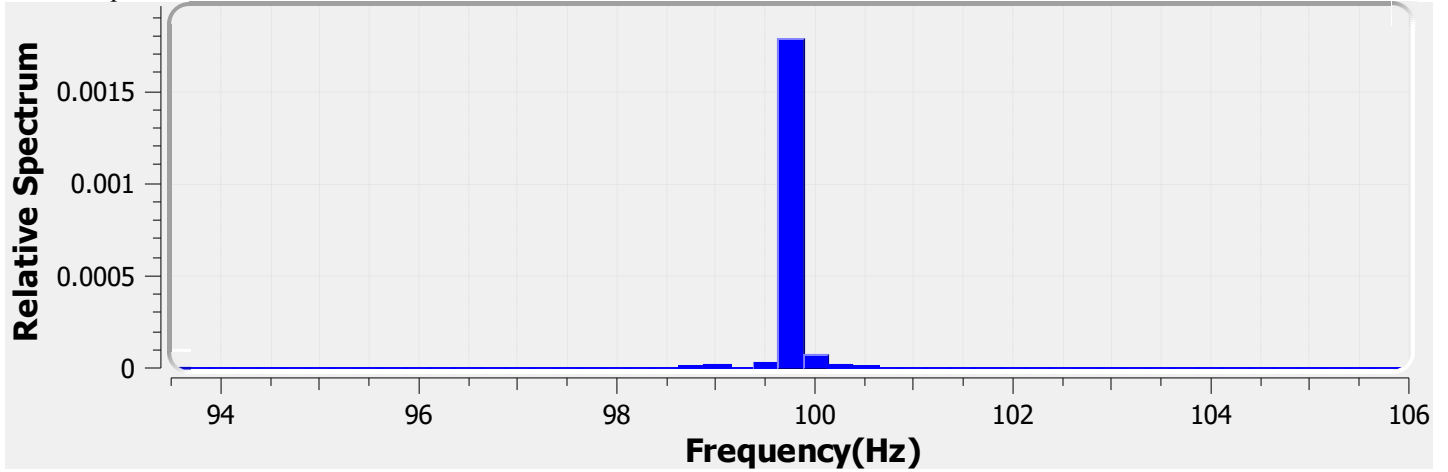
Test Wave

Local Waveform(0.000-180.000s)



Name:	Eagle Lighting Australia	Type:	EL-VER-2478-000
SN:	ELA-10817-F	Manufacturer:	Eagle Lighting Australia
Tester:	Jesse Cowley	Sample time:	2022-5-11 13:16:37
Lamp base orientation:	Horizontal	Description:	VERTEX ET 30W 4400LM 940 DELTA 1500x150
Remark:		Standard:	IESNA 2000,CIE TN 006,etc

Relative Spectrum Waveform



Test Result

Avg(lm):	199.813 k	Max(lm):	211.910 k	Min(lm):	186.511 k
BASIC					
Frequency:	99.750 Hz				
IEC-Pst [10KS/s]					
Pst:	0.433	Result:	very acceptable		
CA CEC					
PAM:	6.375%	PAM(40Hz):	0.533%	PAM(90Hz):	0.705%
PAM(200Hz):	1.244%	PAM(400Hz):	1.473%	PAM(1000Hz):	2.246%
ASSIST					
Flicker Index:	0.005	Percent Flicker:	3.626%	d:	0.000%
a:	0.000	MP:	0.3	fb:	0.000Hz
DP:	2%	Acceptability:	no consider stroboscopic effects		
IEEE Std 1789					
NMI:	0.079	NM2:	0.190	Module Depth:	3.626%
Risk level:	No effect				
CIE SVM					
SVM:	0.017	Visibility:	Not Visible		

Name:	Eagle Lighting Australia	Type:	EL-VER-2478-000
SN:	ELA-10817-F	Manufacturer:	Eagle Lighting Australia
Tester:	Jesse Cowley	Sample time:	2022-5-11 13:16:37
Lamp base orientation:	Horizontal	Description:	VERTEX ET 30W 4400LM 940 DELTA 1500x150
Remark:		Standard:	IESNA 2000,CIE TN 006,etc