

# Flicker Test Report

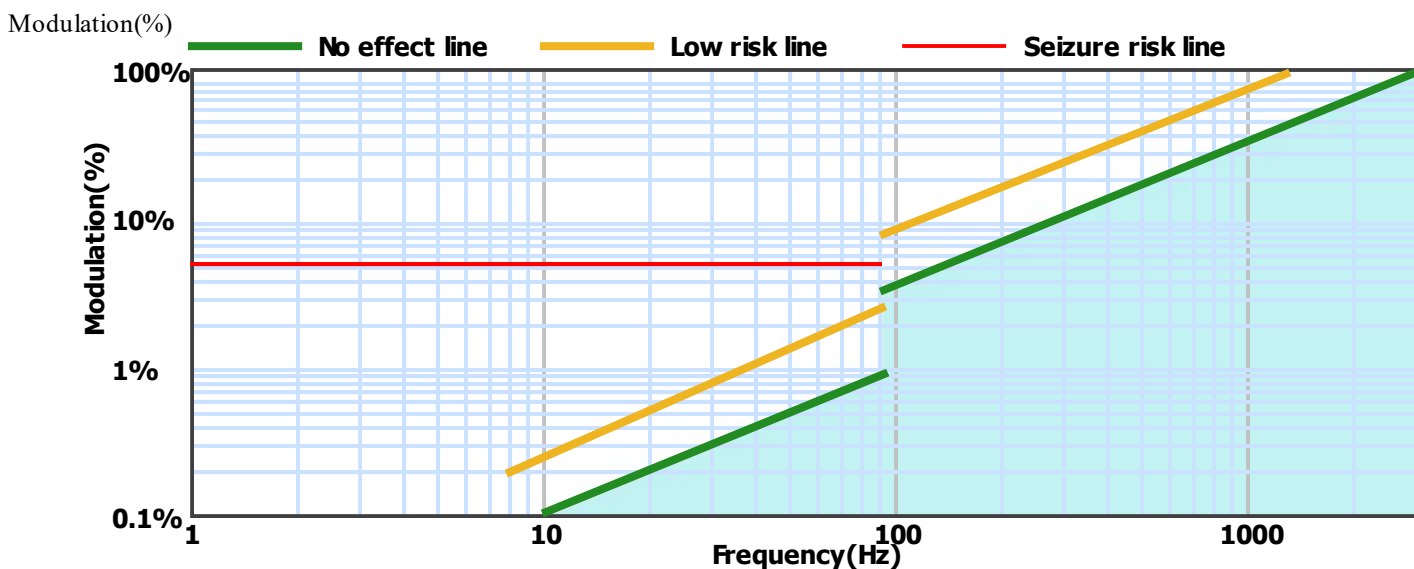
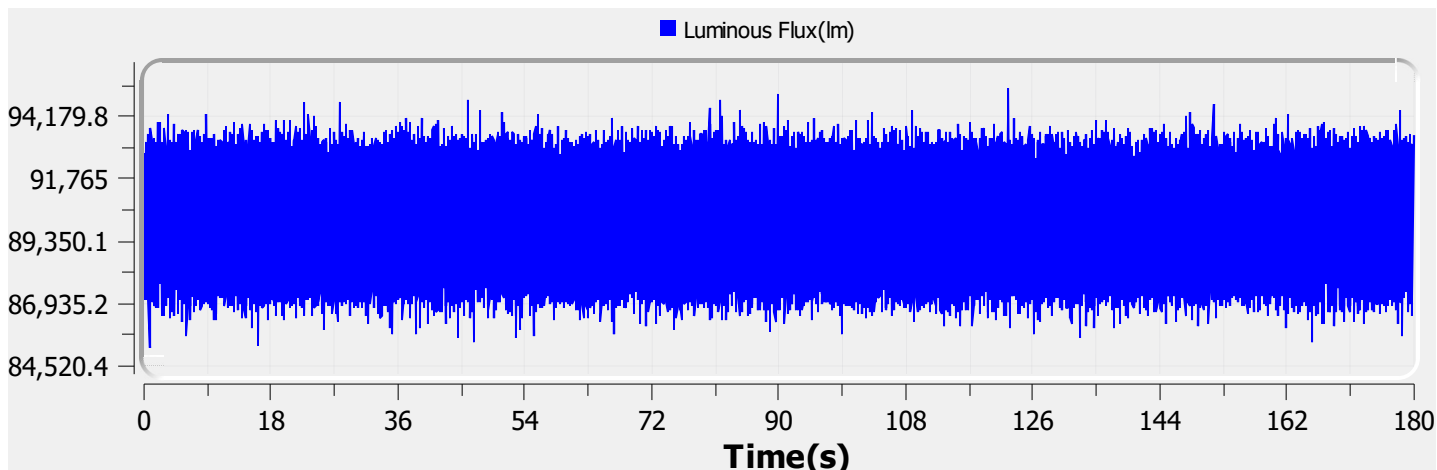
## Test condition

Photometric Type: Luminous Flux(lm)    Test range: Range2    Sampling Mode: Software

Samplerate: 20 kS/s    Sampling Time: 180.00 s

## Test Wave

Local Waveform(0.000-180.000s)



Name:

Type: EL-ELLP-1551-244

SN: ELA-10881-F

Manufacturer: Eagle Lighting

Tester: Frank Magdic

Sample time: 2022-8-4 11:36:58

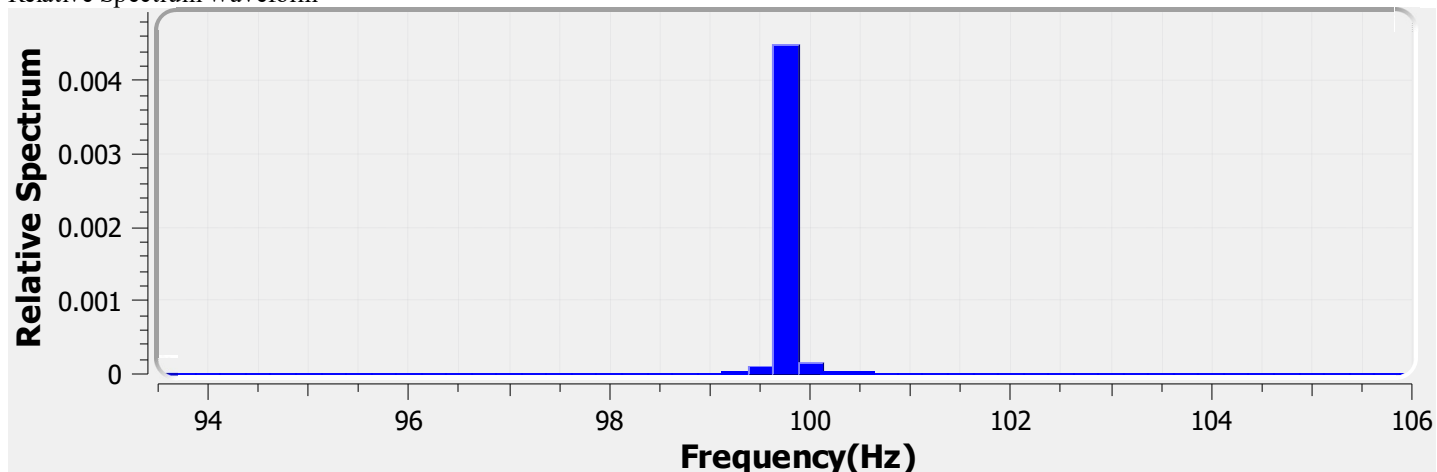
Lamp base orientation: Horizontal

Description: ELLE PEN 33W 5150LM 940 DELTA 1250 SIN D/IND WHITE

Remark:

Standard: IESNA 2000,CIE TN 006,etc

Relative Spectrum Waveform



### Test Result

<b>Avg(lm):</b>	90.125 k	<b>Max(lm):</b>	95.284 k	<b>Min(lm):</b>	85.222 k
<b>BASIC</b>					
<b>Frequency:</b>	99.750 Hz				
<b>IEC-Pst [10KS/s]</b>					
<b>Pst:</b>	0.010	<b>Result:</b>	very acceptable		
<b>CA CEC</b>					
<b>PAM:</b>	5.575%	<b>PAM(40Hz):</b>	0.090%	<b>PAM(90Hz):</b>	0.138%
<b>PAM(200Hz):</b>	1.028%	<b>PAM(400Hz):</b>	1.167%	<b>PAM(1000Hz):</b>	1.429%
<b>ASSIST</b>					
<b>Flicker Index:</b>	0.003	<b>Percent Flicker:</b>	2.458%	<b>d:</b>	0.000%
<b>a:</b>	0.000	<b>MP:</b>	0.1	<b>fb:</b>	0.000Hz
<b>DP:</b>	0%	<b>Acceptability:</b>	no consider stroboscopic effects		
<b>IEEE Std 1789</b>					
<b>NMI:</b>	0.101	<b>NM2:</b>	0.242	<b>Module Depth:</b>	2.458%
<b>Risk level:</b>	No effect				
<b>CIE SVM</b>					
<b>SVM:</b>	0.027	<b>Visibility:</b>	Not Visible		

**Name:**

**Type:** EL-ELLP-1551-244

**SN:** ELA-10881-F

**Manufacturer:** Eagle Lighting

**Tester:** Frank Magdic

**Sample time:** 2022-8-4 11:36:58

**Lamp base orientation:** Horizontal

**Description:** ELLE PEN 33W 5150LM 940 DELTA 1250 SIN D/IND WHITE

**Remark:**

**Standard:** IESNA 2000,CIE TN 006,etc