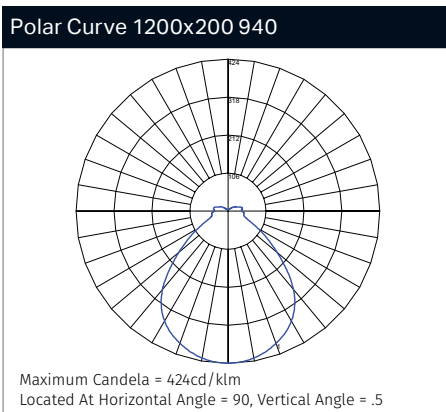
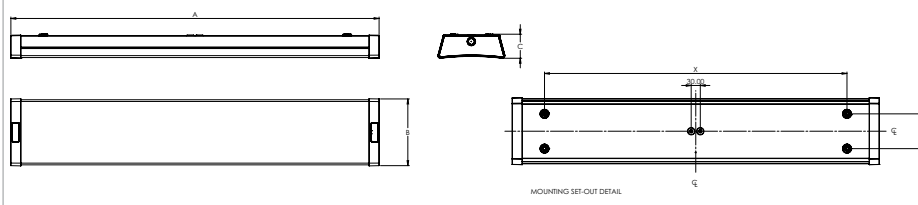


Key Family Details	
Optical System:	Textured acrylic diffuser with secondary internal masking film
Mounting Type:	Surface mounted
Colour Consistency Initial:	3 SDCM
Finish Options:	Standard white. Other finish options via cust.
System Warranty:	5 years
CCT:	4000K
CRI (Ra):	90+
R9:	50+
COI Compliant:	Yes (≤ 2.8)
Melanopic Ratio	≥ 0.71

Mechanical Drawing								
Physical Parameters	Luminaire Dimensions			Aperture Size		Mounting Set		Weight
Code	A [mm]	B [mm]	C [mm]	D [mm]	E [mm]	X [mm]	Y [mm]	[kg]
EL-EDU-1000-000	652	215	77	585	215	450	115	2.9
EL-EDU-1001-000	652	215	77	585	215	450	115	2.9
EL-EDU-1002-000	1212	215	77	1145	215	1000	115	4.9
EL-EDU-1003-000	1212	215	77	1145	215	1000	115	4.9
EL-EDU-1004-000	1212	215	77	1145	215	1000	115	4.9
EL-EDU-1005-000	1212	215	77	1145	215	1000	115	4.9
EL-EDU-1006-000	1492	215	77	1425	215	1250	115	5.9
EL-EDU-1007-000	1492	215	77	1425	215	1250	115	5.9
EL-EDU-1008-000	1492	215	77	1425	215	1250	115	5.9



Application

Designed for educational facilities, the EDUCO is a new high performance, exceptionally low-UGR(*) luminaire specifically engineered using the latest LED technology and with ease of installation in mind.

Design

Designed, tested and manufactured in Australia, the EDUCO is designed to achieve WELL and Greenstar certifications, along with obtaining a high NABERS rating.

Further adding to its sustainability credentials, we have embraced circular economy principles to develop a sustainable product that supports the cradle-to-cradle (as opposed to the cradle-to-grave) economy.

By being able to easily upgrade EDUCO and reuse/recycle its consumable parts, the luminaire is given more than one life cycle. This, therefore, reinserts the resources back into the economy with the least amount of energy expended, whilst minimising carbon emissions and waste to landfill.

Optics:

The EDUCO optics consists of a bi-divergent optical system where an inner convex lens combines with the outer concave microprismatic lens to provide best in class light dispersion control and minimise UGR (*).

Controls:

Standard non-dim, DALI and OR (Organic Response SN3) options are readily available. Constant Light Output (CLO) is standard on DALI variants and OR models. Other options may be possible via customisation.

Mechanical:

Future-ready design with easily upgradeable cassette, in line with circular economy principles, including regeneration of the asset, upgradeability to improved future technology, better management of operating and future capital expenditures.

Rated IP44 (**).

Emergency:

The ability to integrate Emergency functionality including 3rd party emergency devices.

(*) A calculation of UGR is the result of how a luminaire interacts with the interior environment and the users of the space, not just a figure assigned to a luminaire based on a standard set of parameters. Depending on room geometry and surface reflectance's EDUCO is capable of achieving UGR ≤ 16 .

** IP44 (NON-ORT)/IP20 (ORT)

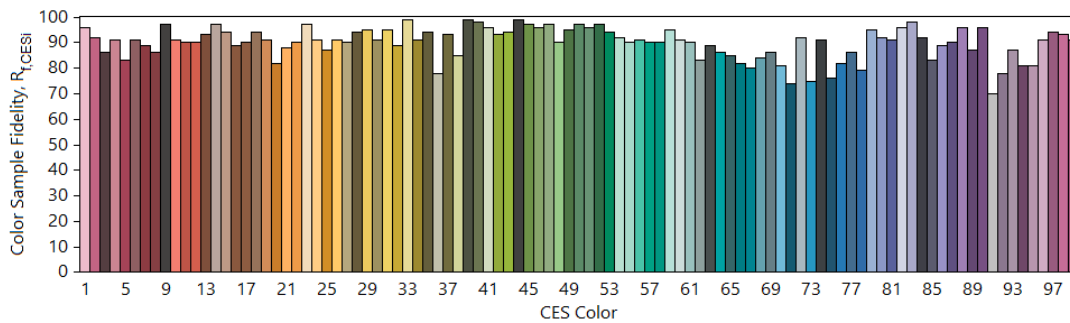
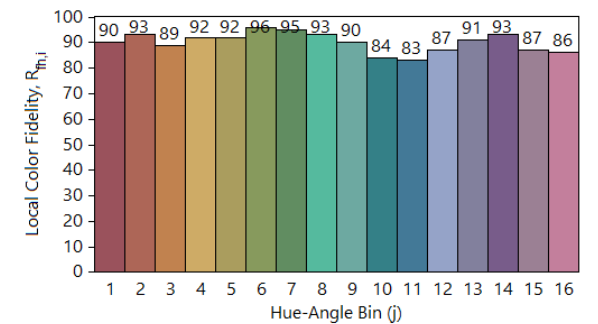
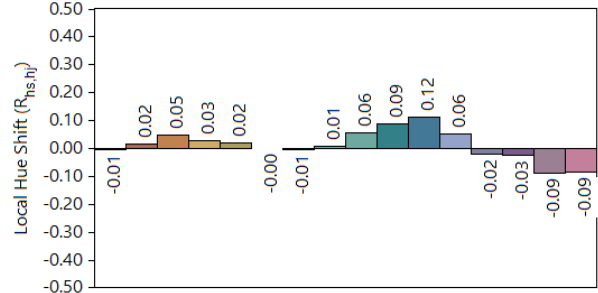
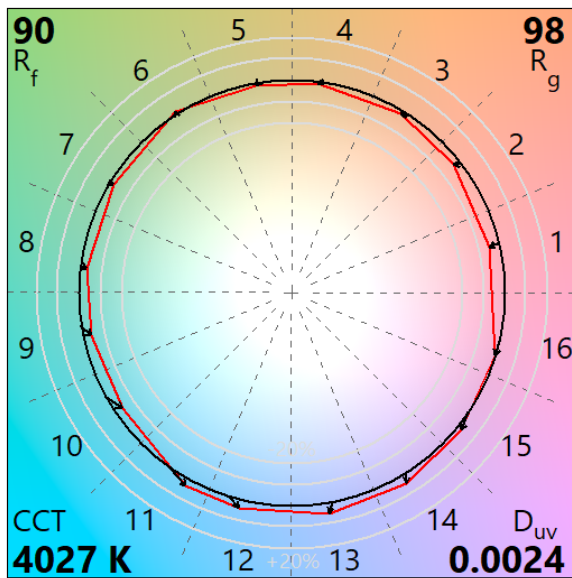
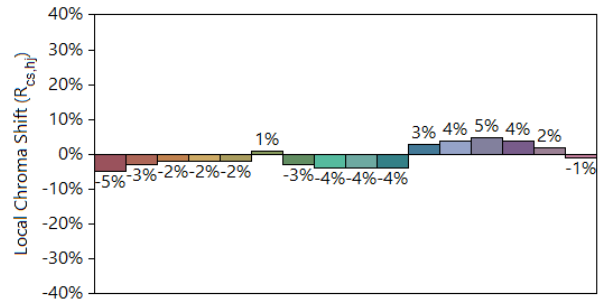
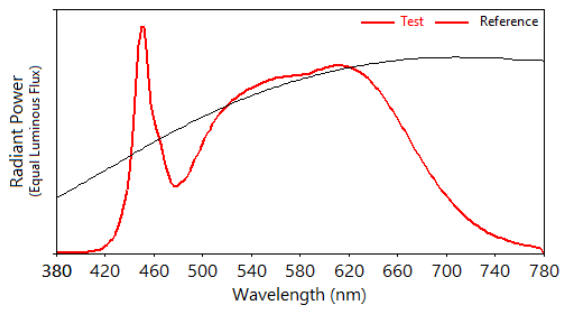
Product Design Registration: 202111143



Optical Performance										
Code	Power [W]	Systems Lumens [lm]	Luminaire Lumens [lm]	Efficacy [lm/W]	Nominal Size [mmxmm]	Spacing (h=2.7m) [m x m]	W/m ²	Calculated UGR max	LLMF L90 [hrs]	Lifetime TM21 L70 [hrs]
									LM80 DURATION 12,000 hrs	
EL-EDU-1000-000	12	1,625	1,383	112	600x200	n/a	n/a	n/a	62,000	72,000
EL-EDU-1001-000	17	2,210	1,900	115	600x200	n/a	n/a	n/a	59,000	72,000
EL-EDU-1002-000	16	2,360	2,023	123	1200x200	3 x 4	2.55	16	64,000	72,000
EL-EDU-1003-000	22	3,250	2,804	126	1200x200	3 x 3	2.59	16	61,000	72,000
EL-EDU-1004-000	31	4,425	3,861	125	1200x200	2 x 3	2.40	19	57,000	72,000
EL-EDU-1005-000	39	5,610	4,856	123	1200x200	2 x 3	3.06	19	53,000	72,000
EL-EDU-1006-000	28	4,285	3,661	130	1500x200	2 x 3	2.19	19	62,000	72,000
EL-EDU-1007-000	38	5,530	4,879	129	1500x200	2 x 3	2.93	19	58,000	72,000
EL-EDU-1008-000	48	7,015	6,088	126	1500x200	n/a	n/a	n/a	54,000	72,000

Wiring options	Suffix
Standard	-000
DALI (CLO)	-244
Emergency Maintained	-800
Organic Response (CLO)	-954

TM-30-18 Colour Rendition Report



Notes: EDUCO 31W 4425LM 940 1215X215

x 0.3810
y 0.3823
u' 0.2232
v' 0.5041

CIE 13.3-1995
(CRI)
 R_a 91
 R_g 60

Colors are for visual orientation purposes only.