

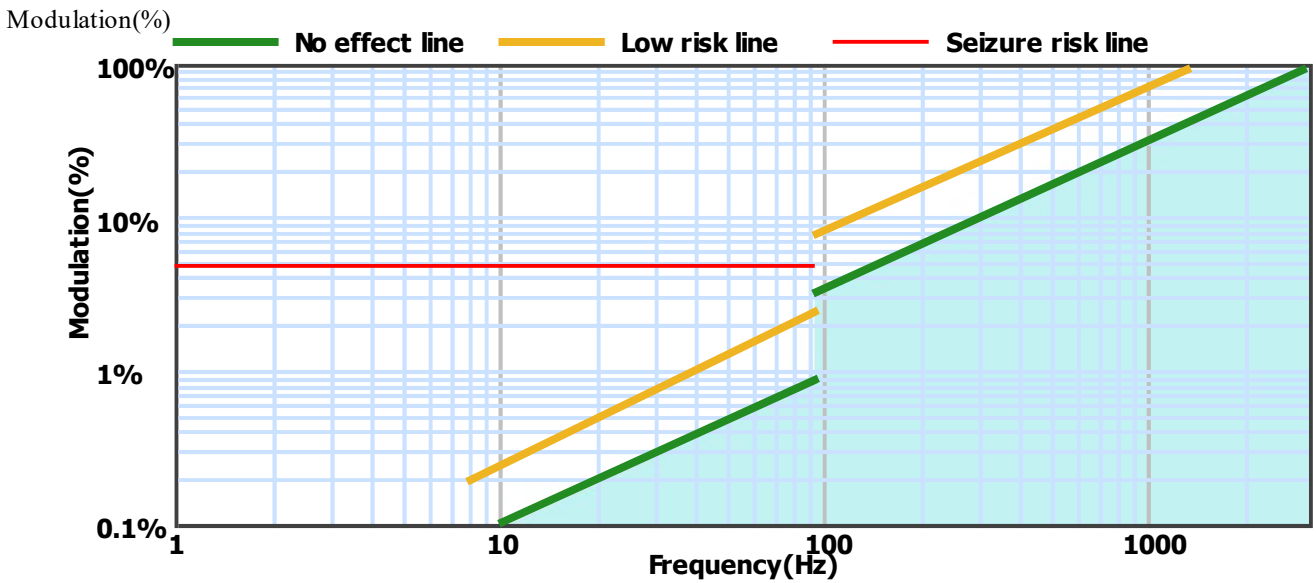
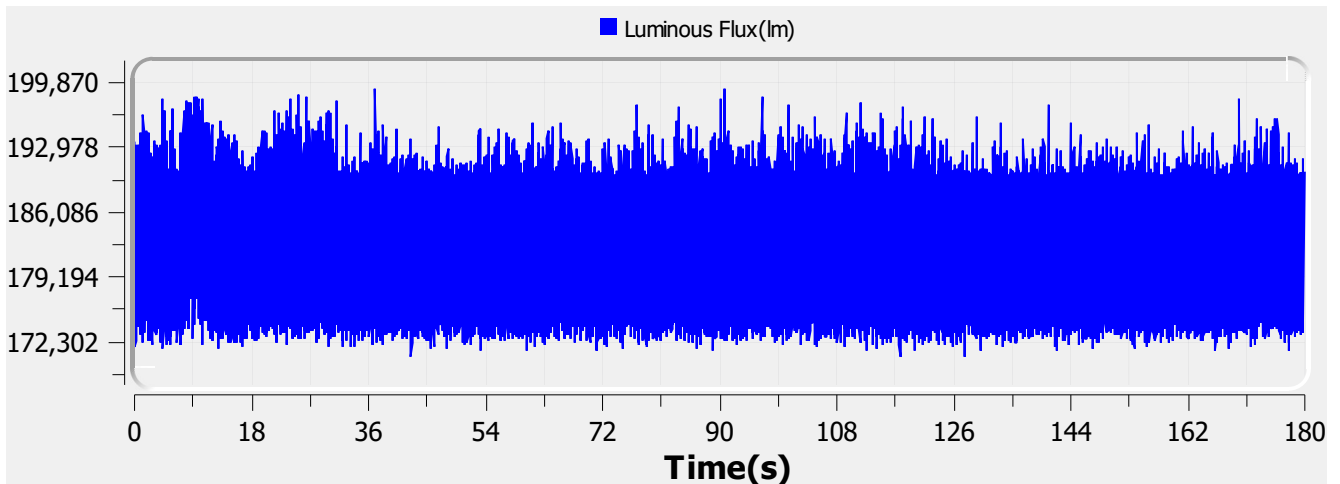
# Flicker Test Report

## Test condition

Photometric Type Luminous Flux(lm) Test range: Range2 Sampling Mode: Software  
 Samplerate: 20 kS/s Sampling Time: 180.00 s

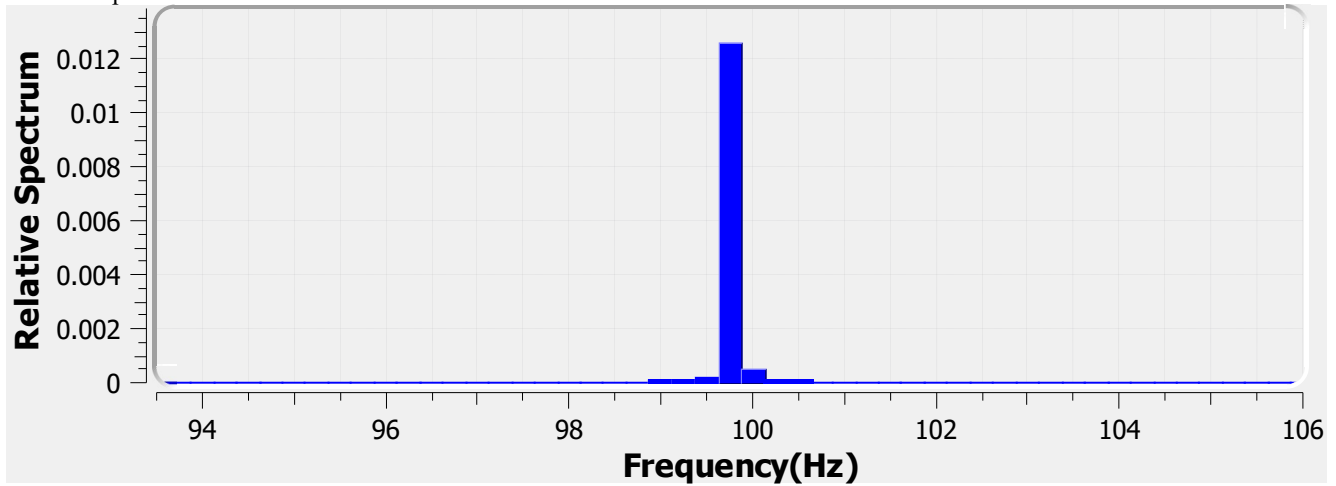
## Test Wave

Local Waveform(0.000-180.000s)



<b>Name:</b>	Eagle Lighting Australia	<b>Type:</b>	EL-SR65L-1162-000
<b>SN:</b>	ELA-10785-F.b	<b>Manufacturer:</b>	Eagle Lighting Australia
<b>Tester:</b>	Mark Antonello	<b>Sample time:</b>	2021-12-8 09:47:27
<b>Lamp base orientation:</b>	Horizontal	<b>Description:</b>	SR65 PC BA LED 2R 29W 4200LM 95-2-40 DELTA 1220x350
<b>Remark:</b>		<b>Standard:</b>	IESNA 2000,CIE TN 006,etc

Relative Spectrum Waveform



### Test Result

<b>Avg(lm):</b>	186.114 k	<b>Max(lm):</b>	199.320 k	<b>Min(lm):</b>	170.603 k
<b>BASIC</b>					
<b>Frequency:</b>	99.750 Hz				
<b>IEC-Pst [10KS/s]</b>					
<b>Pst:</b>	0.200	<b>Result:</b>	very acceptable		
<b>CA CEC</b>					
<b>PAM:</b>	7.763%	<b>PAM(40Hz):</b>	0.279%	<b>PAM(90Hz):</b>	0.443%
<b>PAM(200Hz):</b>	1.654%	<b>PAM(400Hz):</b>	1.870%	<b>PAM(1000Hz):</b>	2.523%
<b>ASSIST</b>					
<b>Flicker Index:</b>	0.005	<b>Percent Flicker:</b>	4.028%	<b>d:</b>	0.000%
<b>a:</b>	0.000	<b>MP:</b>	0.1	<b>fb:</b>	0.000Hz
<b>DP:</b>	1%	<b>Acceptability:</b>	no consider stroboscopic effects		
<b>IEEE Std 1789</b>					
<b>NM1:</b>	0.189	<b>NM2:</b>	0.454	<b>Module Depth:</b>	4.028%
<b>Risk level:</b>	No effect				
<b>CIE SVM</b>					
<b>SVM:</b>	0.047	<b>Visibility:</b>	Not Visible		

---

<b>Name:</b>	Eagle Lighting Australia	<b>Type:</b>	EL-SR65L-1162-000
<b>SN:</b>	ELA-10785-F.b	<b>Manufacturer:</b>	Eagle Lighting Australia
<b>Tester:</b>	Mark Antonello	<b>Sample time:</b>	2021-12-8 09:47:27
<b>Lamp base orientation:</b>	Horizontal	<b>Description:</b>	SR65 PC BA LED 2R 29W 4200LM 95-2-40 DELTA 1220x350
<b>Remark:</b>		<b>Standard:</b>	IESNA 2000,CIE TN 006,etc