

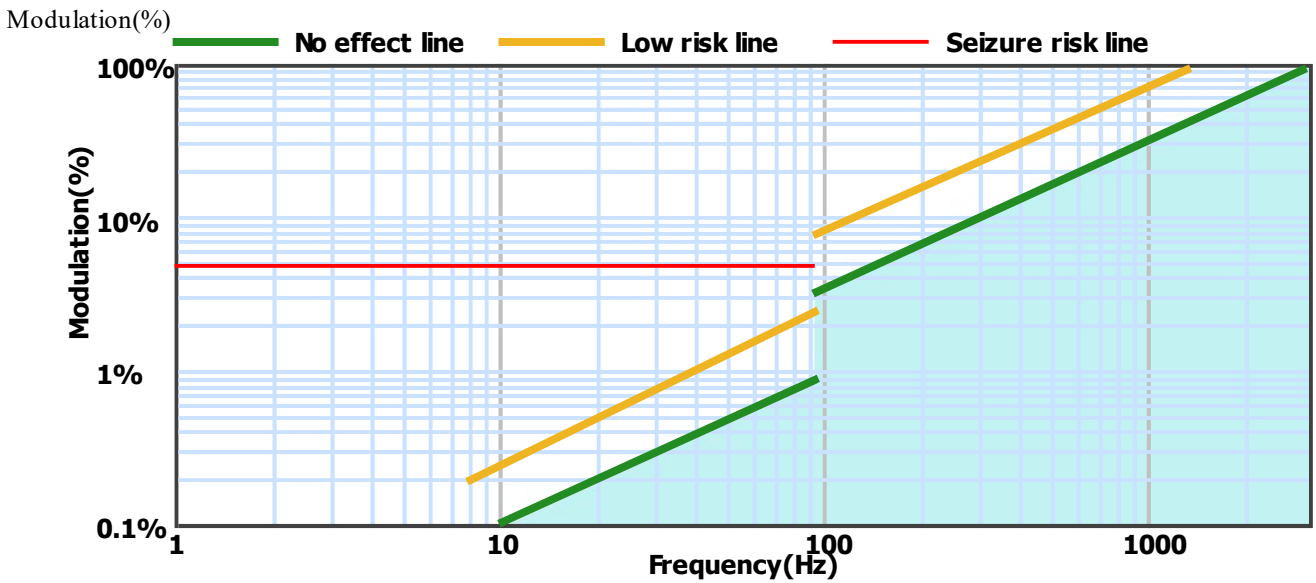
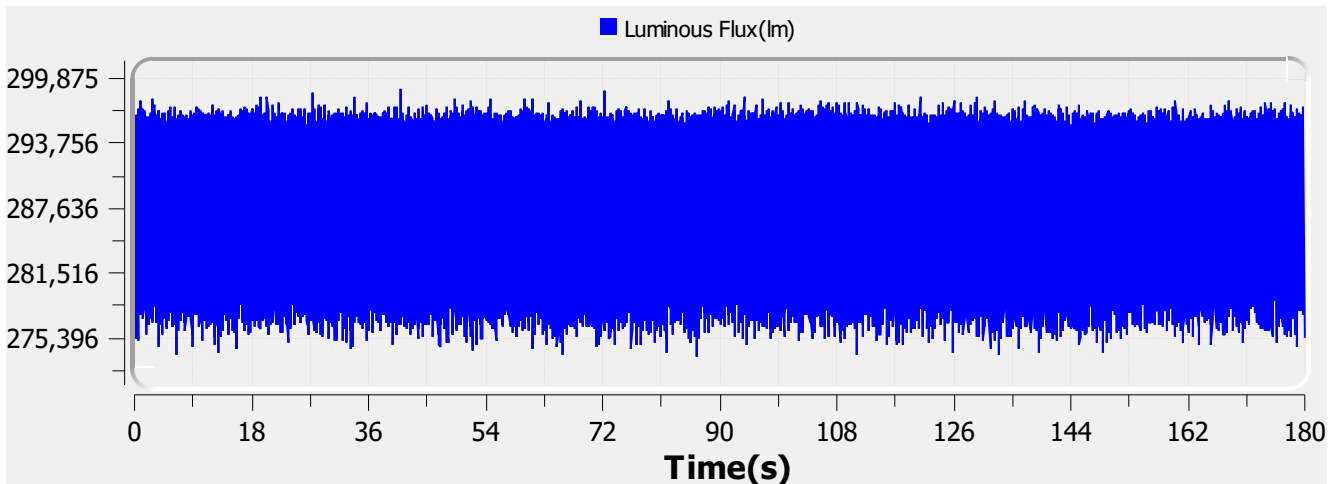
Flicker Test Report

Test condition

Photometric Type Luminous Flux(lm) Test range: Range2 Sampling Mode: Software
 Samplerate: 20 kS/s Sampling Time: 180.00 s

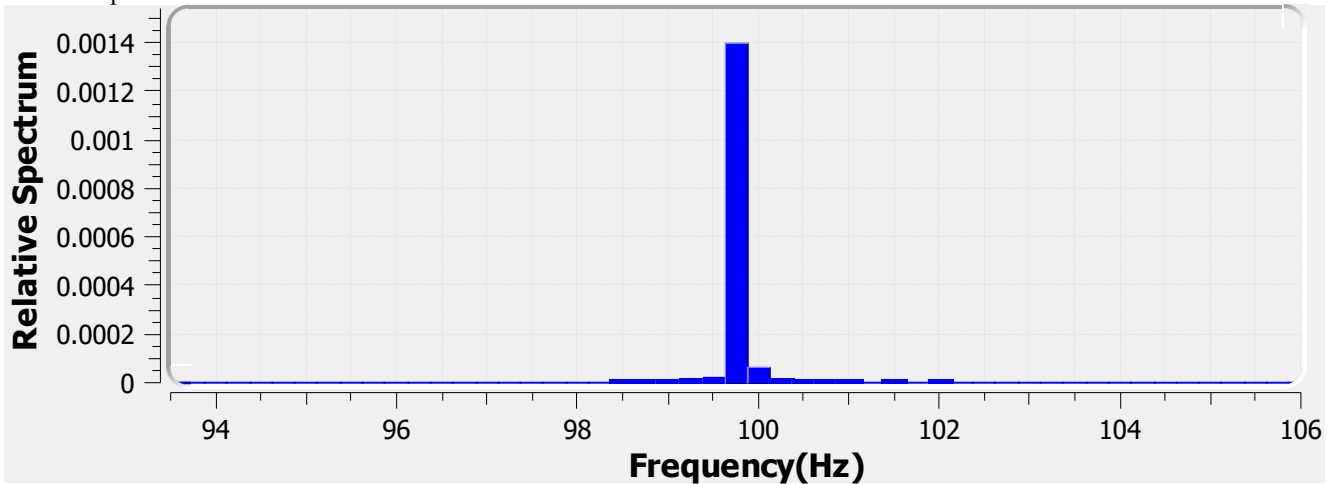
Test Wave

Local Waveform(0.000-180.000s)



Name:	Eagle Lighting Australia	Type:	EL-OPSL-XXXX-000
SN:	ELA-10781-F.b	Manufacturer:	Eagle Lighting Australia
Tester:	Mark Antonello	Sample time:	2022-3-11 08:32:08
Lamp base orientation:	Horizontal	Description:	OPSL FAMILY LED CRI.95+ SDCM.2 50W 7000LM
Remark:		Standard:	IESNA 2000,CIE TN 006,etc

Relative Spectrum Waveform



Test Result

Avg(lm):	287.108 k	Max(lm):	299.021 k	Min(lm):	273.521 k
BASIC					
Frequency:	99.750 Hz				
IEC-Pst [10KS/s]					
Pst:	0.180	Result:	very acceptable		
CA CEC					
PAM:	4.454%	PAM(40Hz):	0.238%	PAM(90Hz):	0.402%
PAM(200Hz):	1.058%	PAM(400Hz):	1.749%	PAM(1000Hz):	2.457%
ASSIST					
Flicker Index:	0.005	Percent Flicker:	2.746%	d:	0.000%
a:	0.000	MP:	0.1	fb:	0.000Hz
DP:	1%	Acceptability:	no consider stroboscopic effects		
IEEE Std 1789					
NM1:	0.107	NM2:	0.257	Module Depth:	2.746%
Risk level:	No effect				
CIE SVM					
SVM:	0.016	Visibility:	Not Visible		

Name:	Eagle Lighting Australia	Type:	EL-OPSL-XXXX-000
SN:	ELA-10781-F.b	Manufacturer:	Eagle Lighting Australia
Tester:	Mark Antonello	Sample time:	2022-3-11 08:32:08
Lamp base orientation:	Horizontal	Description:	OPSL FAMILY LED CRI.95+ SDCM.2 50W 7000LM
Remark:		Standard:	IESNA 2000,CIE TN 006,etc