

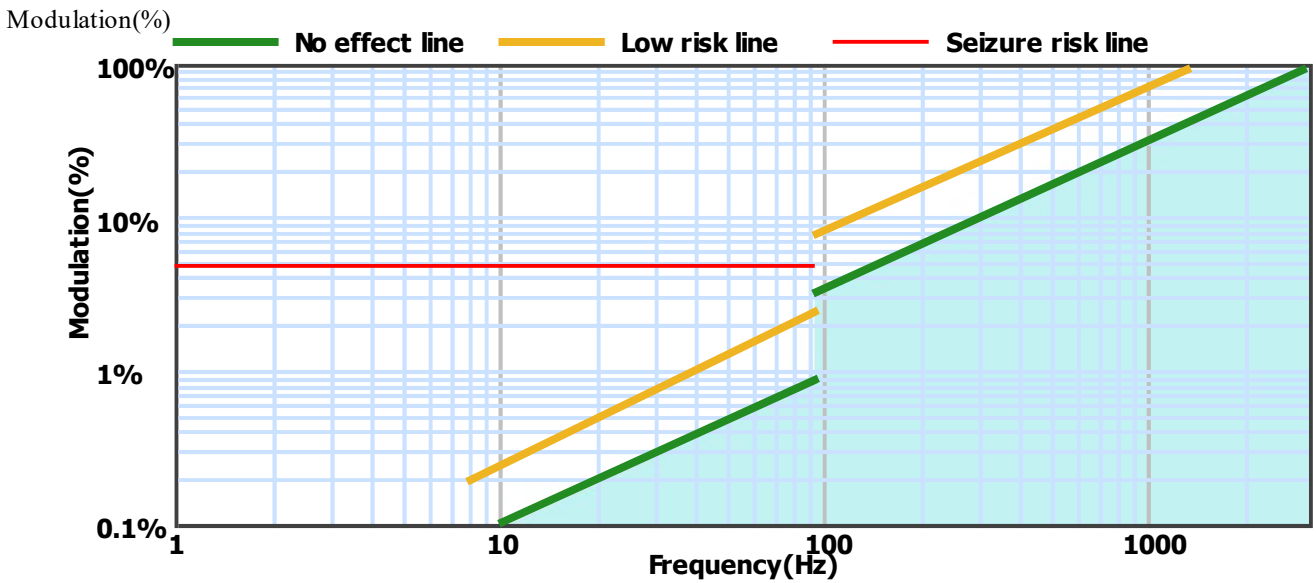
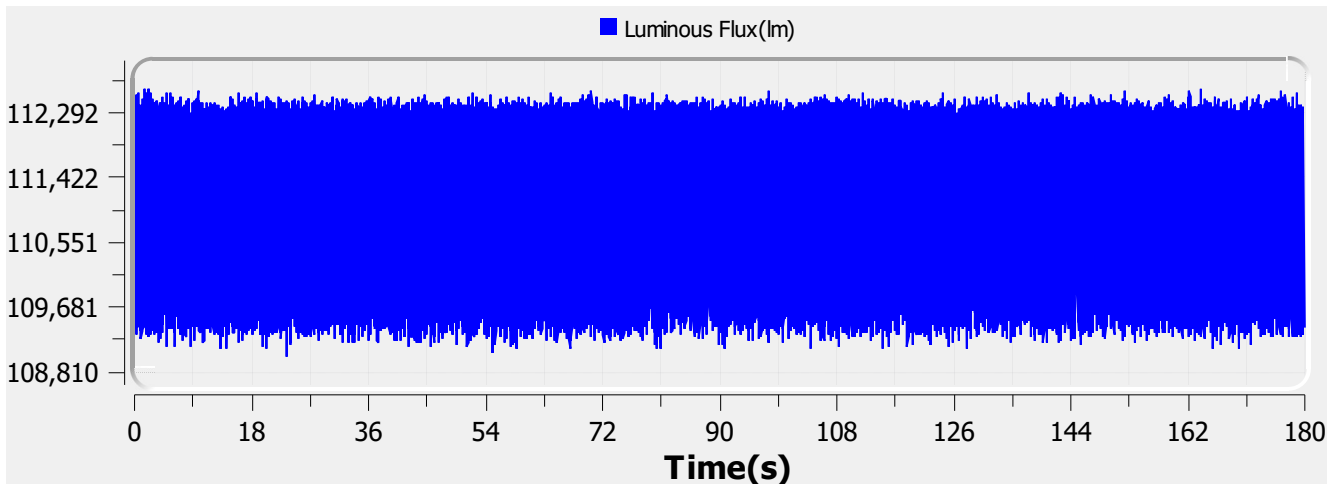
Flicker Test Report

Test condition

Photometric Type Luminous Flux(lm) Test range: Range2 Sampling Mode: Software
 Samplerate: 20 kS/s Sampling Time: 180.00 s

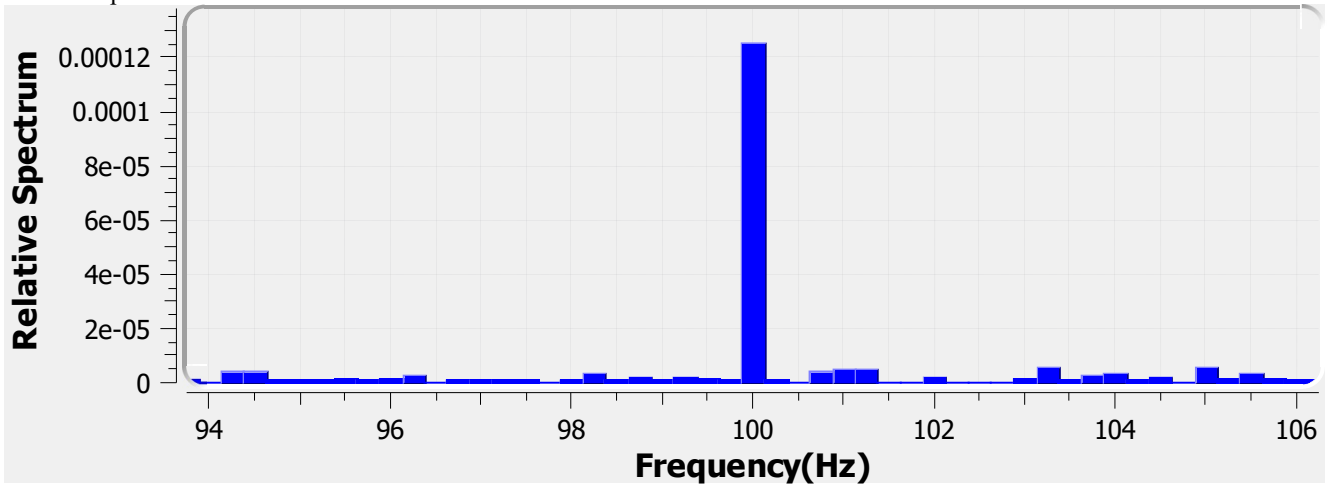
Test Wave

Local Waveform(0.000-180.000s)



Name:	CIRCADIA ET 26W	Type:	LUMINAIRE
SN:	EL-CIR-1121-254	Manufacturer:	Eagle Lighting Australia
Tester:	Frank Magdic	Sample time:	2020-5-15 16:41:21
Lamp base orientation:	Horizontal	Description:	
Remark:		Standard:	IESNA 2000,CIE TN 006,etc

Relative Spectrum Waveform



Test Result

Avg(lm):	111.142 k	Max(lm):	112.630 k	Min(lm):	109.003 k
BASIC					
Frequency:	100.000 Hz				
IEC-Pst [10KS/s]					
Pst:	0.068	Result:	very acceptable		
CA CEC					
PAM:	1.637%	PAM(40Hz):	0.108%	PAM(90Hz):	0.339%
PAM(200Hz):	0.712%	PAM(400Hz):	0.832%	PAM(1000Hz):	0.901%
ASSIST					
Flicker Index:	0.001	Percent Flicker:	1.064%	d:	0.000%
a:	0.000	MP:	0.1	fb:	0.000Hz
DP:	0%	Acceptability:	no consider stroboscopic effects		
IEEE Std 1789					
NM1:	0.027	NM2:	0.066	Module Depth:	1.064%
Risk level:	No effect				
CIE SVM					
SVM:	0.005	Visibility:	Not Visible		

Name:	CIRCADIA ET 26W	Type:	LUMINAIRE
SN:	EL-CIR-1121-254	Manufacturer:	Eagle Lighting Australia
Tester:	Frank Magdic	Sample time:	2020-5-15 16:41:21
Lamp base orientation:	Horizontal	Description:	
Remark:		Standard:	IESNA 2000,CIE TN 006,etc