

Flicker Test Report

Test condition

Photometric Type Luminous Flux(lm) Test range: Range1

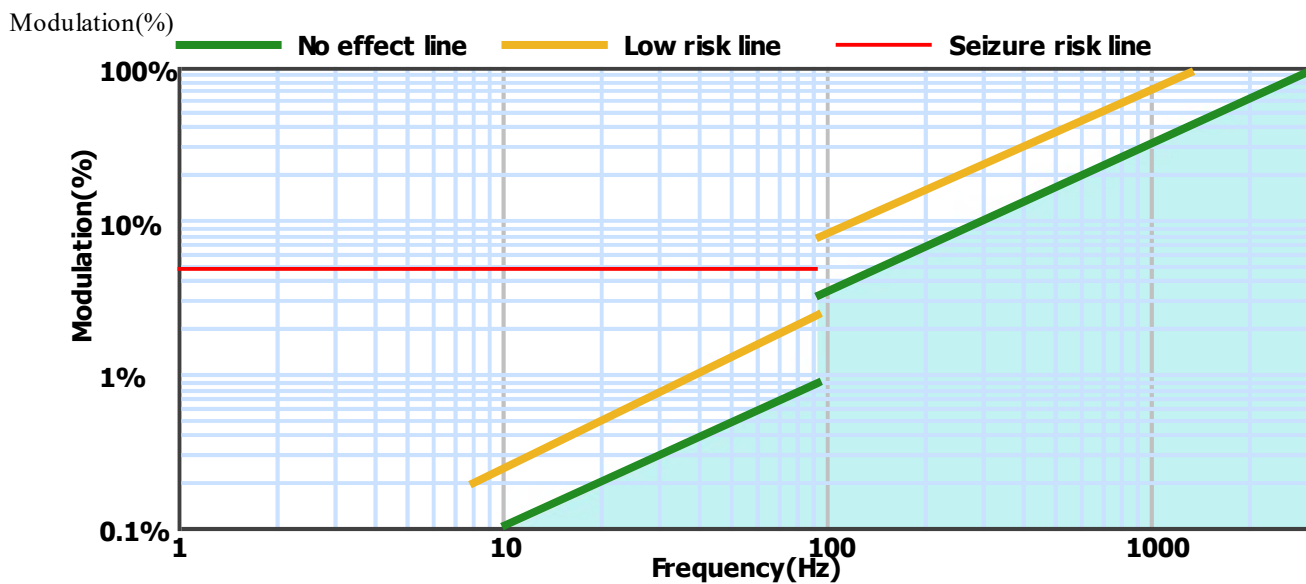
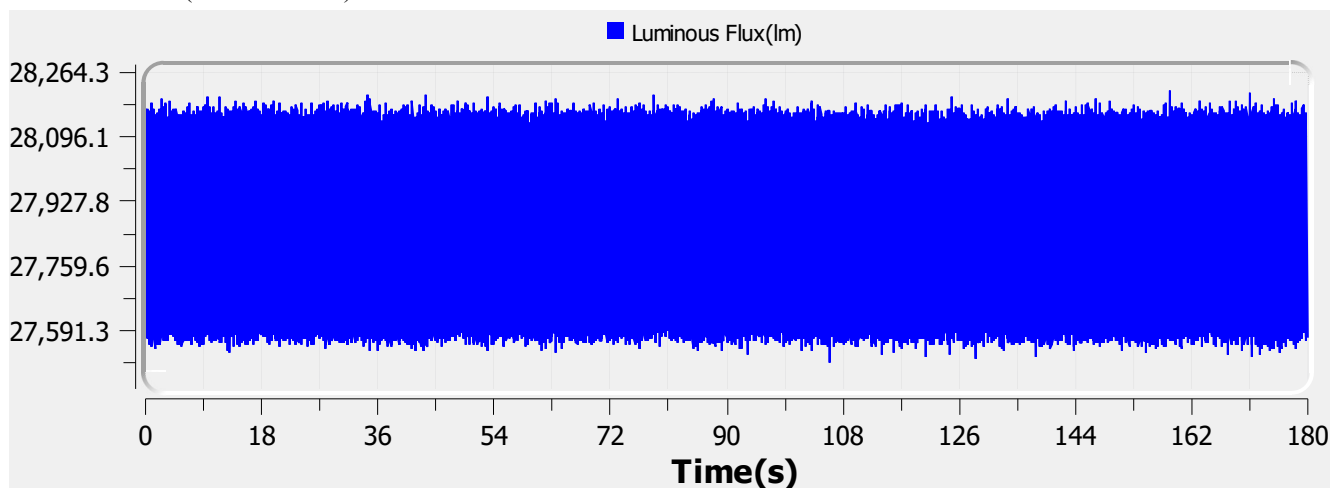
Sampling Mode: Software

Samplerate: 20 kS/s

Sampling Time: 180.00 s

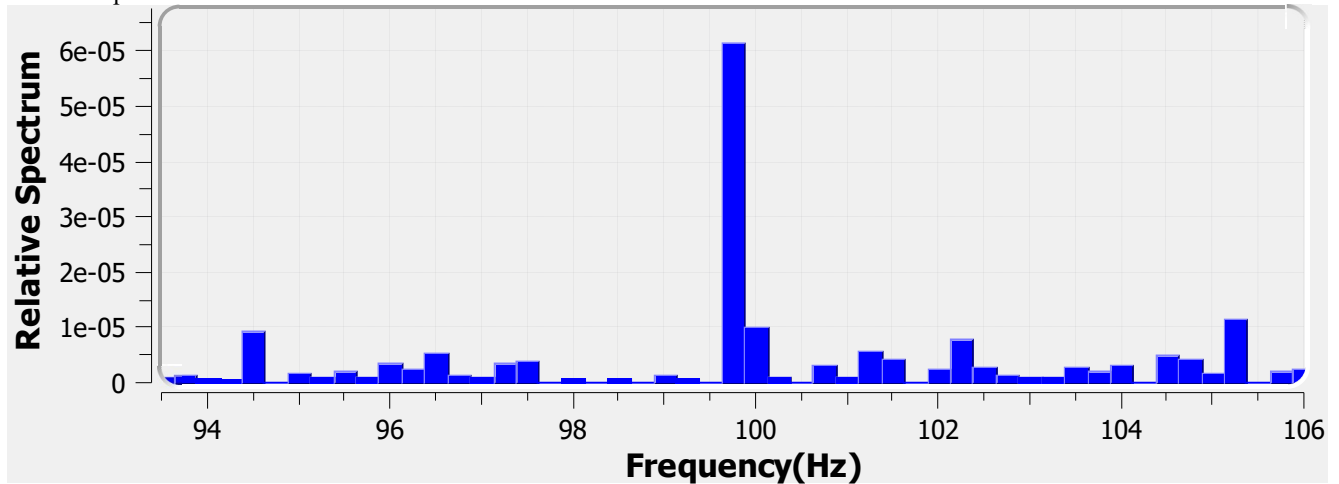
Test Wave

Local Waveform(0.000-180.000s)



Name:	Eagle Lighting Australia	Type:	EL-ARI-1130-254
SN:	ELA-10755-F-B	Manufacturer:	EAGLE LIGHTING
Tester:	FRANK MAGDIC	Sample time:	2021-8-9 10:52:22
Lamp base orientation:	Horizontal	Description:	ARIN 24W 3150LM 927-965,DIR/IND 1200X275 WHT,OPERA TW
Remark:		Standard:	IESNA 2000,CIE TN 006,etc

Relative Spectrum Waveform



Test Result

Avg(lm):	27.859 k	Max(lm):	28.213 k	Min(lm):	27.512 k
BASIC					
Frequency:	99.750 Hz				
IEC-Pst [10KS/s]					
Pst:	0.075	Result:	very acceptable		
CA CEC					
PAM:	1.258%	PAM(40Hz):	0.110%	PAM(90Hz):	0.426%
PAM(200Hz):	0.927%	PAM(400Hz):	0.913%	PAM(1000Hz):	0.862%
ASSIST					
Flicker Index:	0.002	Percent Flicker:	0.908%	d:	0.000%
a:	0.000	MP:	0.0	fb:	0.000Hz
DP:	0%	Acceptability:	no consider stroboscopic effects		
IEEE Std 1789					
NM1:	0.024	NM2:	0.057	Module Depth:	0.908%
Risk level:	No effect				
CIE SVM					
SVM:	0.007	Visibility:	Not Visible		

Name:	Eagle Lighting Australia	Type:	EL-ARI-1130-254
SN:	ELA-10755-F-B	Manufacturer:	EAGLE LIGHTING
Tester:	FRANK MAGDIC	Sample time:	2021-8-9 10:52:22
Lamp base orientation:	Horizontal	Description:	ARIN 24W 3150LM 927-965,DIR/IND 1200X275 WHT,LOTUS TW
Remark:		Standard:	IESNA 2000,CIE TN 006,etc